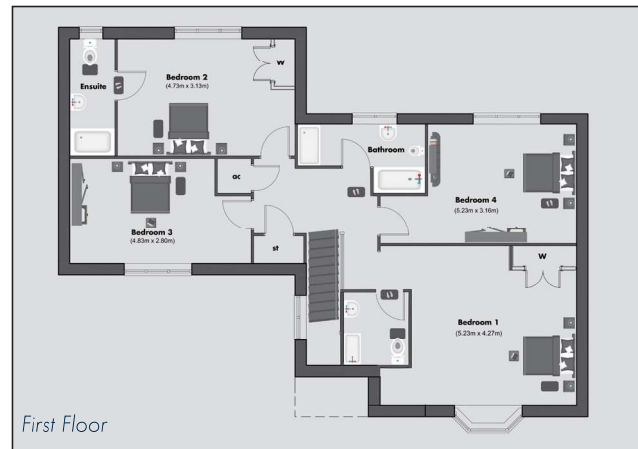


House Type A

4 bedroom detached

Plots: 10 - 23

Project Name	: Monkston Park
Location	: Milton Keynes, United Kingdom
Project Address	: Ladbroke Grove, Milton Keynes
Developer	: Paul Newman
Plot Numbers	: 10 - 23
Bedrooms	: 4 Beds + Study
Internal Size	: 158 m ²
Garden Size	: Plot 10: 195 m ² - Plot 23: 150 m ²
Parking	: Garage
Price	: Plot 10: £665,000 - Plot 23: £660,000
Estimate Completion	: May / June 2020
Property Type	: Freehold
Payment Plan	: 10% Exchange, 10% Stage Payment, 80% Completion



For more information and inquiries, please contact :



Kuwait :
Zahra Complex - 7th Floor - Office No.29
Tel.: +965 257 57 871 - Fax: +965 257 57 874
Sales : +965 50860001 / +965 66802570

Qatar :
Toyota Tower, 3rd Floor, Office No. 303
Tel.: +974 444 33 044 / 444 33 033
Sales : +974 77344708 / +974 77737408
+974 50348130

Customer Service Whatsapp : +965 992 92 664

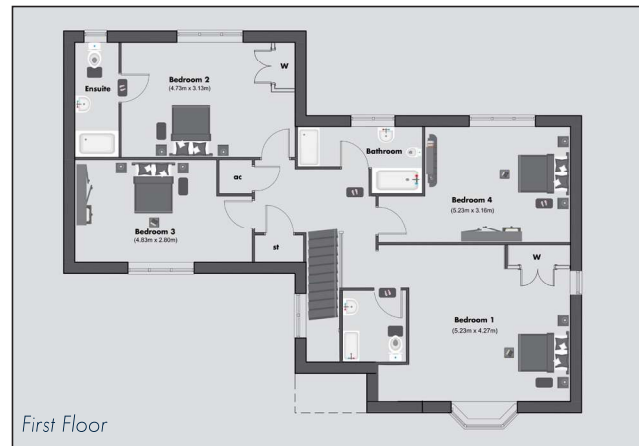
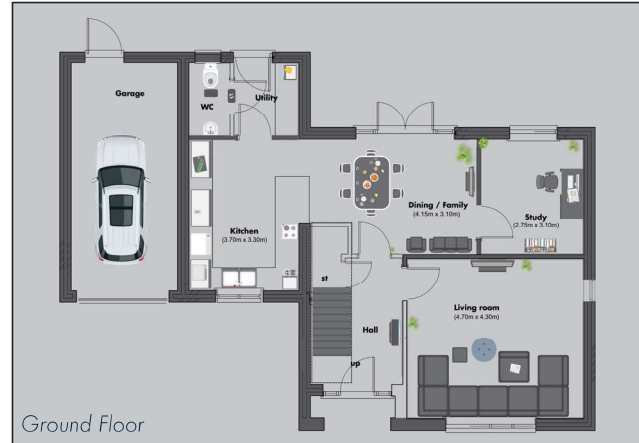


House Type A1

4 bedroom detached

Plots: 9 - 24

Project Name	: Monkston Park
Location	: Milton Keynes, United Kingdom
Project Address	: Ladbroke Grove, Milton Keynes
Developer	: Paul Newman
Plot Numbers	: 9 - 24
Bedrooms	: 4 Beds + Study
Internal Size	: 158 m ²
Garden Size	: Plot 9: 160 m ² - Plot 24: 162 m ²
Parking	: Garage
Price	: Plot 9: £665,000 - Plot 24: £660,000
Estimate Completion	: May / June 2020
Property Type	: Freehold
Payment Plan	: 10% Exchange, 10% Stage Payment, 80% Completion



For more information and inquiries, please contact :



Kuwait :
Zahra Complex - 7th Floor - Office No.29
Tel.: +965 257 57 871 - Fax: +965 257 57 874
Sales : +965 50860001 / +965 66802570

Qatar :
Toyota Tower, 3rd Floor, Office No. 303
Tel.: +974 444 33 044 / 444 33 033
Sales : +974 77344708 / +974 77737408
+974 50348130

Customer Service Whatsapp : +965 992 92 664



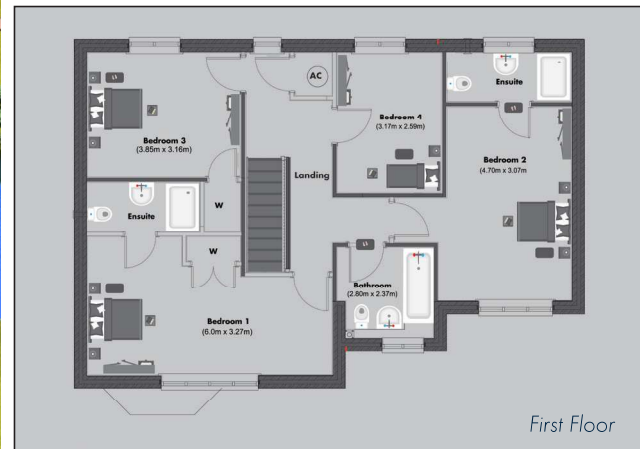
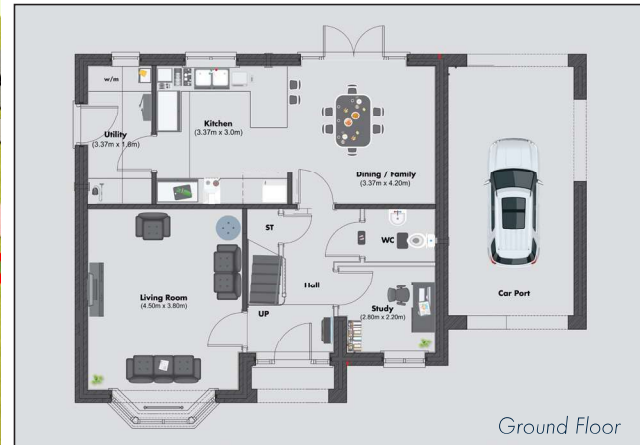
Important Notice: These particulars are for illustration only, the description and measurements herein, do not form any part of a contract. Whilst every effort has been made to ensure accuracy, this cannot be guaranteed. Site layouts, floor plans and specifications were taken from plans which were correct at the time of print. All plans contained within this brochure are not to scale. Room dimensions contained within this brochure were taken off plan in metric and are subject to tolerances of +/- 50mm. Imperial measurements are for guidance purposes only. Computer generated images are for illustrative purposes only and kitchen/ bathroom layouts, materials, colour and external elevations are subject to change. The information, imagery and digital imagery contained within this brochure is for guidance purposes only and does not constitute a contract, part of a contract or warranty.

House Type B

4 bedroom detached

Plot: 22

Project Name	: Monkston Park
Location	: Milton Keynes, United Kingdom
Project Address	: Ladbroke Grove, Milton Keynes
Developer	: Paul Newman
Plot Numbers	: 22
Bedrooms	: 4 Beds + Study
Internal Size	: 150 m ²
Garden Size	: 80 m ²
Parking	: Garage
Price	: £630,000
Estimate Completion	: Feb 2020
Property Type	: Freehold
Payment Plan	: 10% Exchange, 10% Stage Payment, 80% Completion



For more information and inquiries, please contact :



Kuwait :
Zahra Complex - 7th Floor - Office No.29
Tel.: +965 257 57 871 - Fax: +965 257 57 874
Sales : +965 50860001 / +965 66802570

Qatar :
Toyota Tower, 3rd Floor, Office No. 303
Tel.: +974 444 33 044 / 444 33 033
Sales : +974 77344708 / +974 77737408
+974 50348130

Customer Service Whatsapp : +965 992 92 664



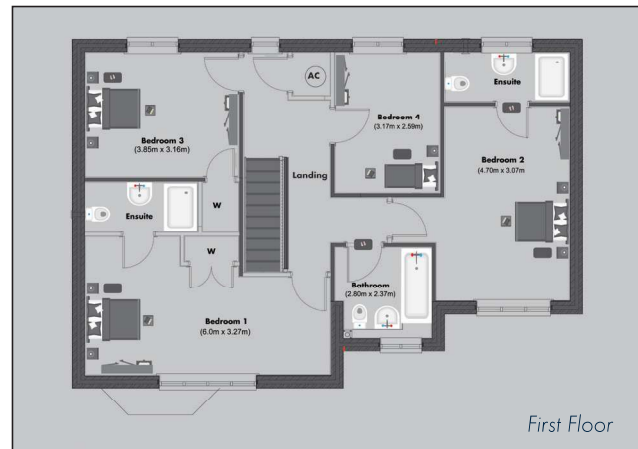
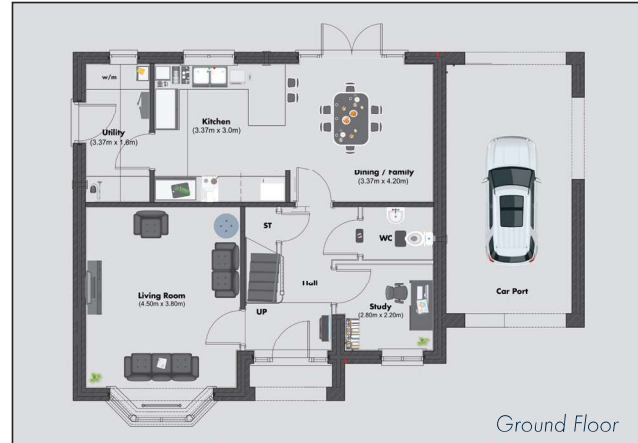
Important Notice: These particulars are for illustration only, the description and measurements herein, do not form any part of a contract. Whilst every effort has been made to ensure accuracy, this cannot be guaranteed. Site layouts, floor plans and specifications were taken from plans which were correct at the time of print. All plans contained within this brochure are not to scale. Room dimensions contained within this brochure were taken off plan in metric and are subject to tolerances of +/- 50mm. Imperial measurements are for guidance purposes only. Computer generated images are for illustrative purposes only and kitchen/ bathroom layouts, materials, colour and external elevations are subject to change. The information, imagery and digital imagery contained within this brochure is for guidance purposes only and does not constitute a contract, part of a contract or warranty.

House Type B1

4 bedroom detached

Plots: 19 - 20

Project Name	: Monkston Park
Location	: Milton Keynes, United Kingdom
Project Address	: Ladbroke Grove, Milton Keynes
Developer	: Paul Newman
Plot Numbers	: 19-20
Bedrooms	: 4 Beds + Study
Internal Size	: 150 m ²
Garden Size	: Plot 19: 96 m ² - Plot 20: 84 m ²
Parking	: Garage
Price	: £630,000
Estimate Completion	: Jan / Feb 2020
Property Type	: Freehold
Payment Plan	: 10% Exchange, 10% Stage Payment, 80% Completion



For more information and inquiries, please contact :



Kuwait :
Zahra Complex - 7th Floor - Office No.29
Tel.: +965 257 57 871 - Fax: +965 257 57 874
Sales : +965 50860001 / +965 66802570

Qatar :
Toyota Tower, 3rd Floor, Office No. 303
Tel.: +974 444 33 044 / 444 33 033
Sales : +974 77344708 / +974 77737408
+974 50348130

Customer Service Whatsapp : +965 992 92 664



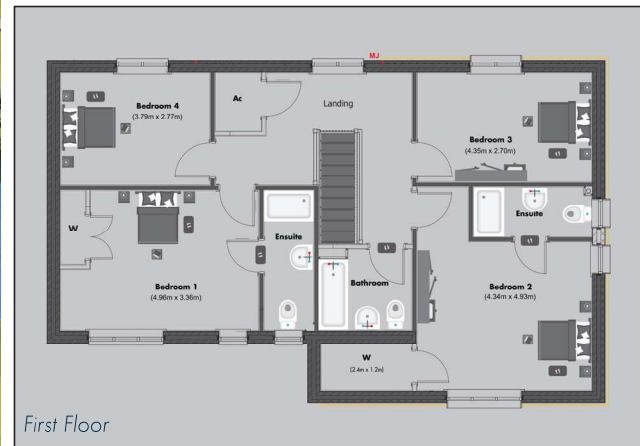
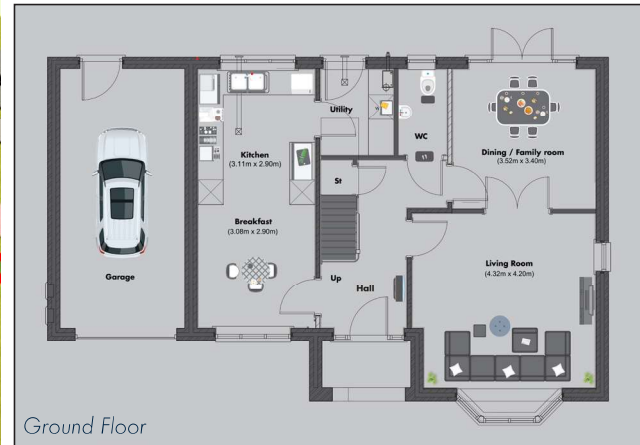
Important Notice: These particulars are for illustration only, the description and measurements herein, do not form any part of a contract. Whilst every effort has been made to ensure accuracy, this cannot be guaranteed. Site layouts, floor plans and specifications were taken from plans which were correct at the time of print. All plans contained within this brochure are not to scale. Room dimensions contained within this brochure were taken off plan in metric and are subject to tolerances of +/- 50mm. Imperial measurements are for guidance purposes only. Computer generated images are for illustrative purposes only and kitchen/ bathroom layouts, materials, colour and external elevations are subject to change. The information, imagery and digital imagery contained within this brochure is for guidance purposes only and does not constitute a contract, part of a contract or warranty.

House Type C

4 bedroom detached

Plot: 15

Project Name	: Monkston Park
Location	: Milton Keynes, United Kingdom
Project Address	: Ladbroke Grove, Milton Keynes
Developer	: Paul Newman
Plot Numbers	: 15
Bedrooms	: 4 Beds
Internal Size	: 152 m2
Garden Size	: 135 m2
Parking	: Garage
Price	: £640,000
Estimate Completion	: December 2019
Property Type	: Freehold
Payment Plan	: 10% Exchange, 10% Stage Payment, 80% Completion



For more information and inquiries, please contact :



Kuwait :
Zahra Complex - 7th Floor - Office No.29
Tel.: +965 257 57 871 - Fax: +965 257 57 874
Sales : +965 50860001 / +965 66802570

Qatar :
Toyota Tower, 3rd Floor, Office No. 303
Tel.: +974 444 33 044 / 444 33 033
Sales : +974 77344708 / +974 77737408
+974 50348130



Customer Service Whatsapp : +965 992 92 664

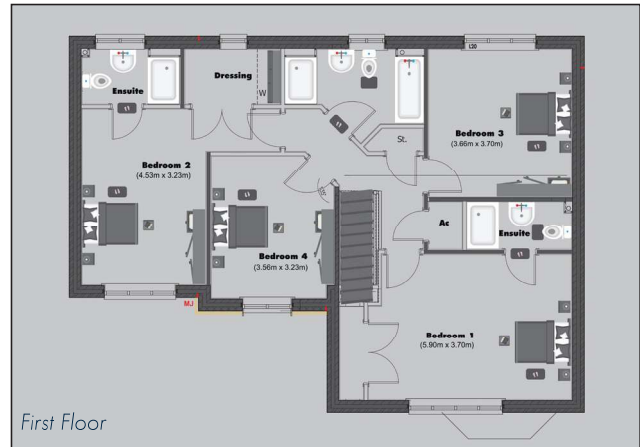
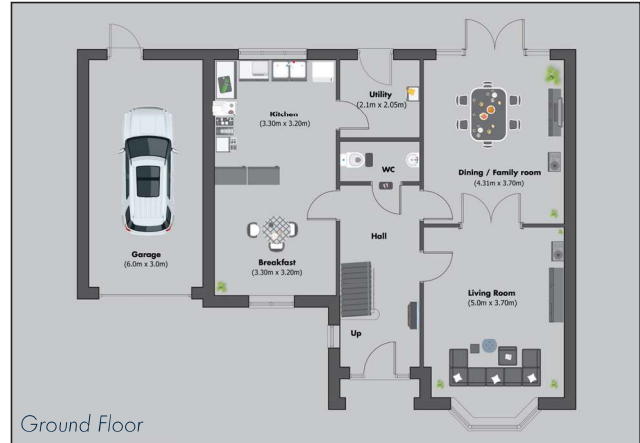
Important Notice: These particulars are for illustration only, the description and measurements herein, do not form any part of a contract. Whilst every effort has been made to ensure accuracy, this cannot be guaranteed. Site layouts, floor plans and specifications were taken from plans which were correct at the time of print. All plans contained within this brochure are not to scale. Room dimensions contained within this brochure were taken off plan in metric and are subject to tolerances of +/- 50mm. Imperial measurements are for guidance purposes only. Computer generated images are for illustrative purposes only and kitchen/ bathroom layouts, materials, colour and external elevations are subject to change. The information, imagery and digital imagery contained within this brochure is for guidance purposes only and does not constitute a contract, part of a contract or warranty.

House Type D

4 bedroom detached

Plots: 17 - 25

Project Name	: Monkston Park
Location	: Milton Keynes, United Kingdom
Project Address	: Ladbroke Grove, Milton Keynes
Developer	: Paul Newman
Plot Numbers	: 17-25
Bedrooms	: 4 Beds
Internal Size	: 165 m2
Garden Size	: Plot 17: 180 m2-Plot 25: 96 m2
Parking	: Garage
Price	: £690,000
Estimate Completion	: Plot 17: Jan 2020 - Plot 25: June 2020
Property Type	: Freehold
Payment Plan	: 10% Exchange, 10% Stage Payment, 80% Completion



For more information and inquiries, please contact :



Kuwait :
Zahra Complex - 7th Floor - Office No.29
Tel.: +965 257 57 871 - Fax: +965 257 57 874
Sales : +965 50860001 / +965 66802570

Qatar :
Toyota Tower, 3rd Floor, Office No. 303
Tel.: +974 444 33 044 / 444 33 033
Sales : +974 77344708 / +974 77737408
+974 50348130



Customer Service Whatsapp : +965 992 92 664

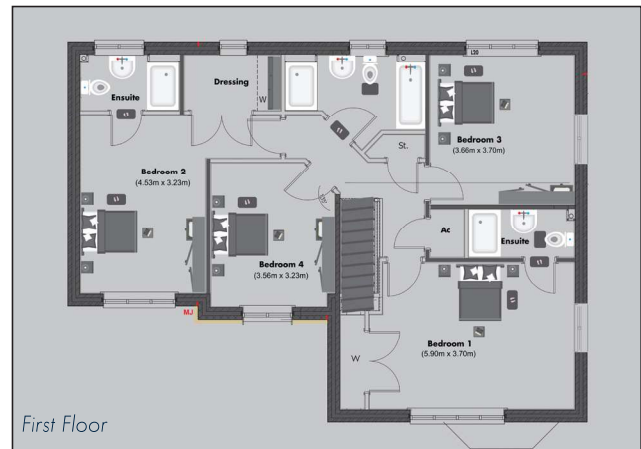
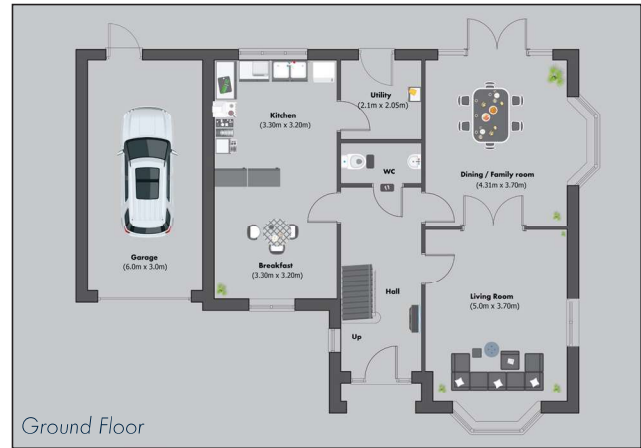
Important Notice: These particulars are for illustration only, the description and measurements herein, do not form any part of a contract. Whilst every effort has been made to ensure accuracy, this cannot be guaranteed. Site layouts, floor plans and specifications were taken from plans which were correct at the time of print. All plans contained within this brochure are not to scale. Room dimensions contained within this brochure were taken off plan in metric and are subject to tolerances of +/- 50mm. Imperial measurements are for guidance purposes only. Computer generated images are for illustrative purposes only and kitchen/ bathroom layouts, materials, colour and external elevations are subject to change. The information, imagery and digital imagery contained within this brochure is for guidance purposes only and does not constitute a contract, part of a contract or warranty.

House Type D1

4 bedroom detached

Plot: 26

Project Name	: Monkston Park
Location	: Milton Keynes, United Kingdom
Project Address	: Ladbroke Grove, Milton Keynes
Developer	: Paul Newman
Plot Numbers	: 26
Bedrooms	: 4 Beds
Internal Size	: 165 m2
Garden Size	: 108 m2
Parking	: Garage
Price	: £690,000
Estimate Completion	: Plot 26: June 2020
Property Type	: Freehold
Payment Plan	: 10% Exchange, 10% Stage Payment, 80% Completion



For more information and inquiries, please contact :



Kuwait :
Zahra Complex - 7th Floor - Office No.29
Tel.: +965 257 57 871 - Fax: +965 257 57 874
Sales : +965 50860001 / +965 66802570

Qatar :
Toyota Tower, 3rd Floor, Office No. 303
Tel.: +974 444 33 044 / 444 33 033
Sales : +974 77344708 / +974 77737408
+974 50348130



Customer Service Whatsapp : +965 992 92 664

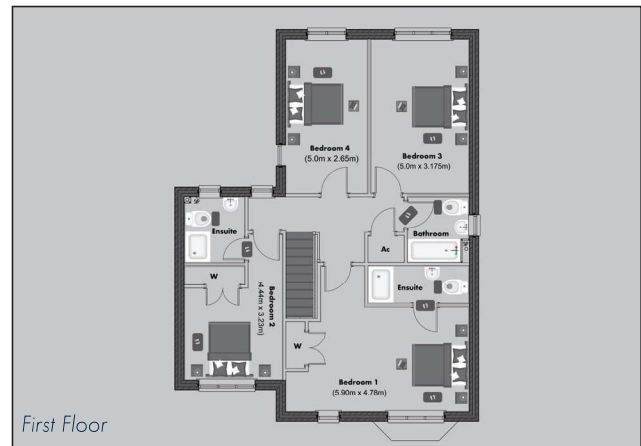
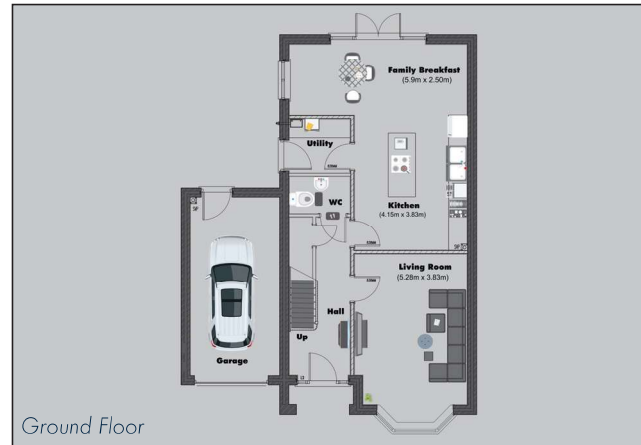
Important Notice: These particulars are for illustration only, the description and measurements herein, do not form any part of a contract. Whilst every effort has been made to ensure accuracy, this cannot be guaranteed. Site layouts, floor plans and specifications were taken from plans which were correct at the time of print. All plans contained within this brochure are not to scale. Room dimensions contained within this brochure were taken off plan in metric and are subject to tolerances of +/- 50mm. Imperial measurements are for guidance purposes only. Computer generated images are for illustrative purposes only and kitchen/ bathroom layouts, materials, colour and external elevations are subject to change. The information, imagery and digital imagery contained within this brochure is for guidance purposes only and does not constitute a contract, part of a contract or warranty.

House Type E

4 bedroom detached

Plot: 13

Project Name	: Monkston Park
Location	: Milton Keynes, United Kingdom
Project Address	: Ladbroke Grove, Milton Keynes
Developer	: Paul Newman
Plot Numbers	: 13
Bedrooms	: 4 Beds
Internal Size	: 158 m2
Garden Size	: 154 m2
Parking	: Garage
Price	: £665,000
Estimate Completion	: March 2020
Property Type	: Freehold
Payment Plan	: 10% Exchange, 10% Stage Payment, 80% Completion



For more information and inquiries, please contact :



Kuwait :
Zahra Complex - 7th Floor - Office No.29
Tel.: +965 257 57 871 - Fax: +965 257 57 874
Sales : +965 50860001 / +965 66802570

Qatar :
Toyota Tower, 3rd Floor, Office No. 303
Tel.: +974 444 33 044 / 444 33 033
Sales : +974 77344708 / +974 77737408
+974 50348130



Customer Service Whatsapp : +965 992 92 664

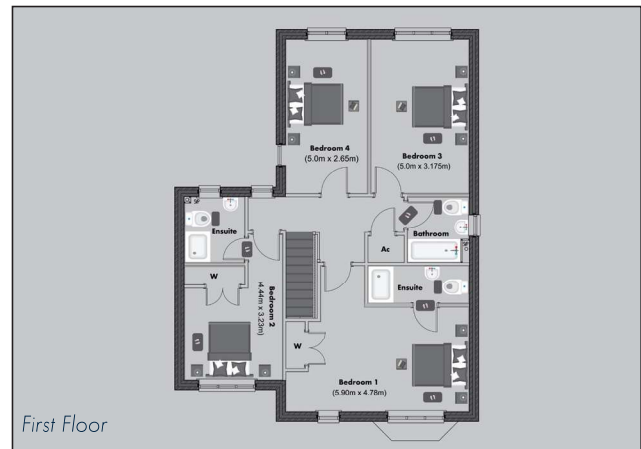
Important Notice: These particulars are for illustration only, the description and measurements herein, do not form any part of a contract. Whilst every effort has been made to ensure accuracy, this cannot be guaranteed. Site layouts, floor plans and specifications were taken from plans which were correct at the time of print. All plans contained within this brochure are not to scale. Room dimensions contained within this brochure were taken off plan in metric and are subject to tolerances of +/- 50mm. Imperial measurements are for guidance purposes only. Computer generated images are for illustrative purposes only and kitchen/ bathroom layouts, materials, colour and external elevations are subject to change. The information, imagery and digital imagery contained within this brochure is for guidance purposes only and does not constitute a contract, part of a contract or warranty.

House Type E1

4 bedroom detached

Plot: 14

Project Name	: Monkston Park
Location	: Milton Keynes, United Kingdom
Project Address	: Ladbroke Grove, Milton Keynes
Developer	: Paul Newman
Plot Numbers	: 14
Bedrooms	: 4 Beds
Internal Size	: 158 m2
Garden Size	: 126 m2
Parking	: Garage
Price	: £665,000
Estimate Completion	: March 2020
Property Type	: Freehold
Payment Plan	: 10% Exchange, 10% Stage Payment, 80% Completion



For more information and inquiries, please contact :



Kuwait :
Zahra Complex - 7th Floor - Office No.29
Tel.: +965 257 57 871 - Fax: +965 257 57 874
Sales : +965 50860001 / +965 66802570

Qatar :
Toyota Tower, 3rd Floor, Office No. 303
Tel.: +974 444 33 044 / 444 33 033
Sales : +974 77344708 / +974 77737408
+974 50348130



Customer Service Whatsapp : +965 992 92 664

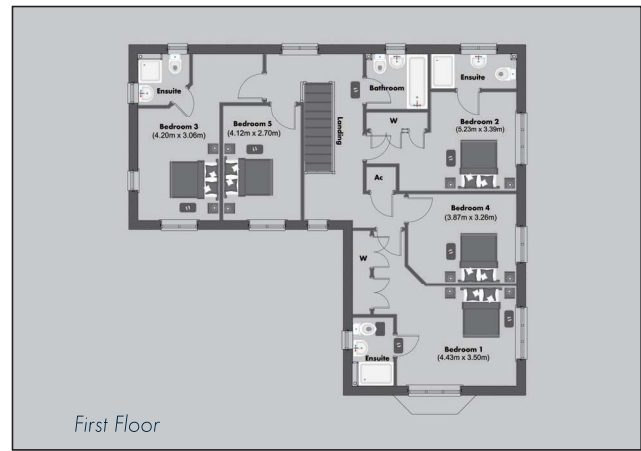
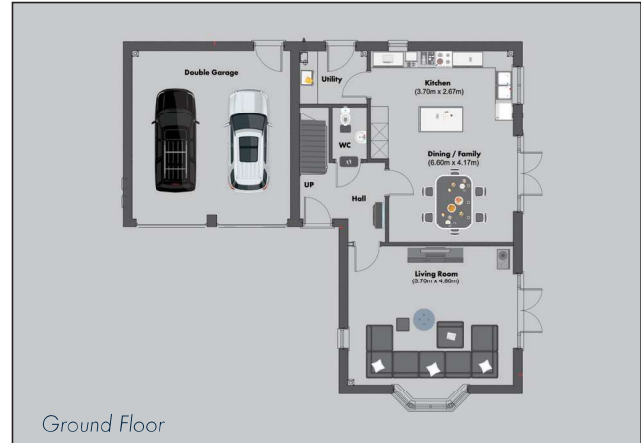
Important Notice: These particulars are for illustration only, the description and measurements herein, do not form any part of a contract. Whilst every effort has been made to ensure accuracy, this cannot be guaranteed. Site layouts, floor plans and specifications were taken from plans which were correct at the time of print. All plans contained within this brochure are not to scale. Room dimensions contained within this brochure were taken off plan in metric and are subject to tolerances of +/- 50mm. Imperial measurements are for guidance purposes only. Computer generated images are for illustrative purposes only and kitchen/ bathroom layouts, materials, colour and external elevations are subject to change. The information, imagery and digital imagery contained within this brochure is for guidance purposes only and does not constitute a contract, part of a contract or warranty.

House Type F

5 bedroom detached

Plots: 18-21

Project Name	: Monkston Park
Location	: Milton Keynes, United Kingdom
Project Address	: Ladbroke Grove, Milton Keynes
Developer	: Paul Newman
Plot Numbers	: 18-21
Bedrooms	: 5 Beds
Internal Size	: 185 m2
Garden Size	: Plot 18: 150 m2 – Plot 21: 117 m2
Parking	: Garage
Price	: £775,000
Estimate Completion	: April 2020
Property Type	: Freehold
Payment Plan	: 10% Exchange, 10% Stage Payment, 80% Completion



For more information and inquiries, please contact :



Kuwait :
Zahra Complex - 7th Floor - Office No.29
Tel.: +965 257 57 871 - Fax: +965 257 57 874
Sales : +965 50860001 / +965 66802570

Qatar :
Toyota Tower, 3rd Floor, Office No. 303
Tel.: +974 444 33 044 / 444 33 033
Sales : +974 77344708 / +974 77737408
+974 50348130



Customer Service Whatsapp : +965 992 92 664

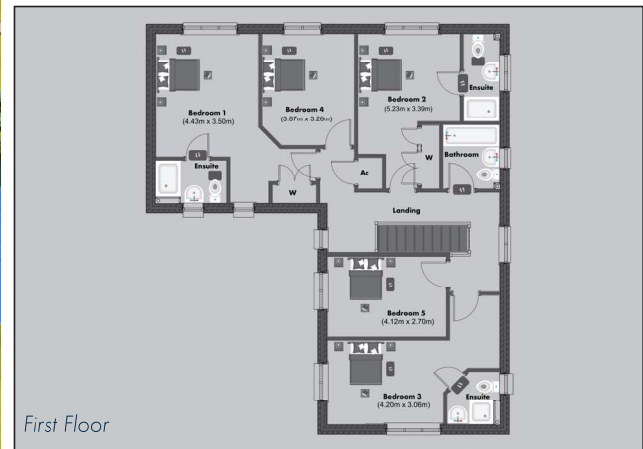
Important Notice: These particulars are for illustration only, the description and measurements herein, do not form any part of a contract. Whilst every effort has been made to ensure accuracy, this cannot be guaranteed. Site layouts, floor plans and specifications were taken from plans which were correct at the time of print. All plans contained within this brochure are not to scale. Room dimensions contained within this brochure were taken off plan in metric and are subject to tolerances of +/- 50mm. Imperial measurements are for guidance purposes only. Computer generated images are for illustrative purposes only and kitchen/ bathroom layouts, materials, colour and external elevations are subject to change. The information, imagery and digital imagery contained within this brochure is for guidance purposes only and does not constitute a contract, part of a contract or warranty.

House Type F1

5 bedroom detached

Plots: 11 - 12

Project Name	: Monkston Park
Location	: Milton Keynes, United Kingdom
Project Address	: Ladbroke Grove, Milton Keynes
Developer	: Paul Newman
Plot Numbers	: 11 - 12
Bedrooms	: 5 Beds
Internal Size	: 185 m ²
Garden Size	: Plot 11: 126 m ² - Plot 12: 156 m ²
Parking	: Garage
Price	: £780,000
Estimate Completion	: April 2020
Property Type	: Freehold
Payment Plan	: 10% Exchange, 10% Stage Payment, 80% Completion



For more information and inquiries, please contact :



Kuwait :
Zahra Complex - 7th Floor - Office No.29
Tel.: +965 257 57 871 - Fax: +965 257 57 874
Sales : +965 50860001 / +965 66802570

Qatar :
Toyota Tower, 3rd Floor, Office No. 303
Tel.: +974 444 33 044 / 444 33 033
Sales : +974 77344708 / +974 77737408
+974 50348130

Customer Service Whatsapp : +965 992 92 664



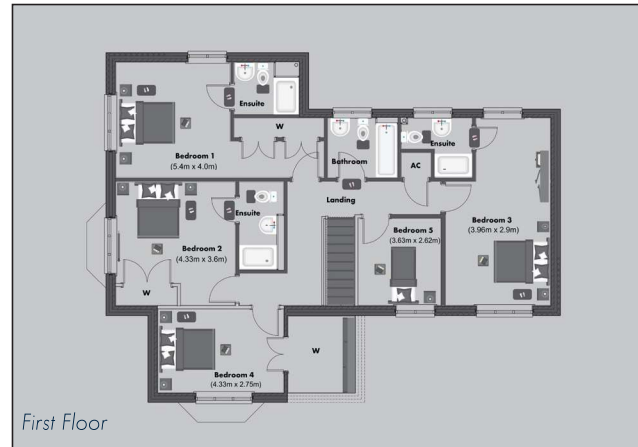
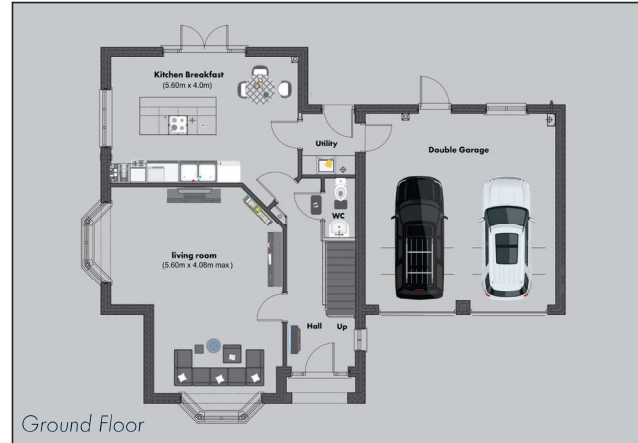
Important Notice: These particulars are for illustration only, the description and measurements herein, do not form any part of a contract. Whilst every effort has been made to ensure accuracy, this cannot be guaranteed. Site layouts, floor plans and specifications were taken from plans which were correct at the time of print. All plans contained within this brochure are not to scale. Room dimensions contained within this brochure were taken off plan in metric and are subject to tolerances of +/- 50mm. Imperial measurements are for guidance purposes only. Computer generated images are for illustrative purposes only and kitchen/ bathroom layouts, materials, colour and external elevations are subject to change. The information, imagery and digital imagery contained within this brochure is for guidance purposes only and does not constitute a contract, part of a contract or warranty.

House Type G

5 bedroom detached

Plot: 16

Project Name	: Monkston Park
Location	: Milton Keynes, United Kingdom
Project Address	: Ladbroke Grove, Milton Keynes
Developer	: Paul Newman
Plot Numbers	: 16
Bedrooms	: 5 Beds
Internal Size	: 183 m2
Garden Size	: 160 m2
Parking	: Garage
Price	: £770,000
Estimate Completion	: December 2019
Property Type	: Freehold
Payment Plan	: 10% Exchange, 10% Stage Payment, 80% Completion



For more information and inquiries, please contact :



Kuwait :
Zahra Complex - 7th Floor - Office No.29
Tel.: +965 257 57 871 - Fax: +965 257 57 874
Sales : +965 50860001 / +965 66802570

Qatar :
Toyota Tower, 3rd Floor, Office No. 303
Tel.: +974 444 33 044 / 444 33 033
Sales : +974 77344708 / +974 77737408
+974 50348130



Customer Service Whatsapp : +965 992 92 664

Important Notice: These particulars are for illustration only, the description and measurements herein, do not form any part of a contract. Whilst every effort has been made to ensure accuracy, this cannot be guaranteed. Site layouts, floor plans and specifications were taken from plans which were correct at the time of print. All plans contained within this brochure are not to scale. Room dimensions contained within this brochure were taken off plan in metric and are subject to tolerances of +/- 50mm. Imperial measurements are for guidance purposes only. Computer generated images are for illustrative purposes only and kitchen/ bathroom layouts, materials, colour and external elevations are subject to change. The information, imagery and digital imagery contained within this brochure is for guidance purposes only and does not constitute a contract, part of a contract or warranty.