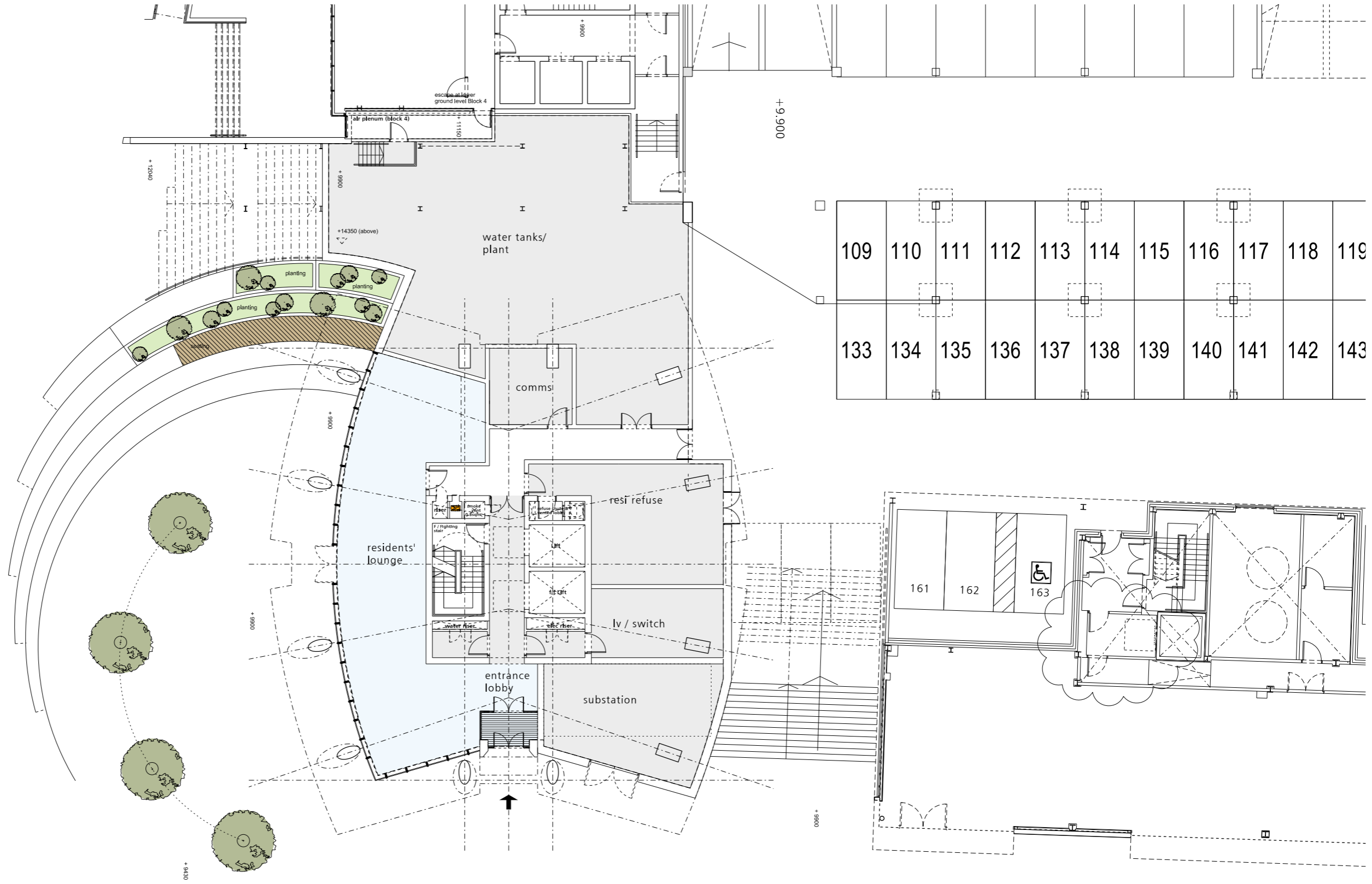


PARLIAMENT



Rev D AEB 13.04.2016 Updated for Planning Issue.
 Rev C KT 08.04.2016 Issued for Draft Planning Issue.
 Rev B AG 30.03.2016 Updated to new setting out
 Rev A AEB 11.03.2016 Updated to pre-app comments

FALCONER CHESTER HALL

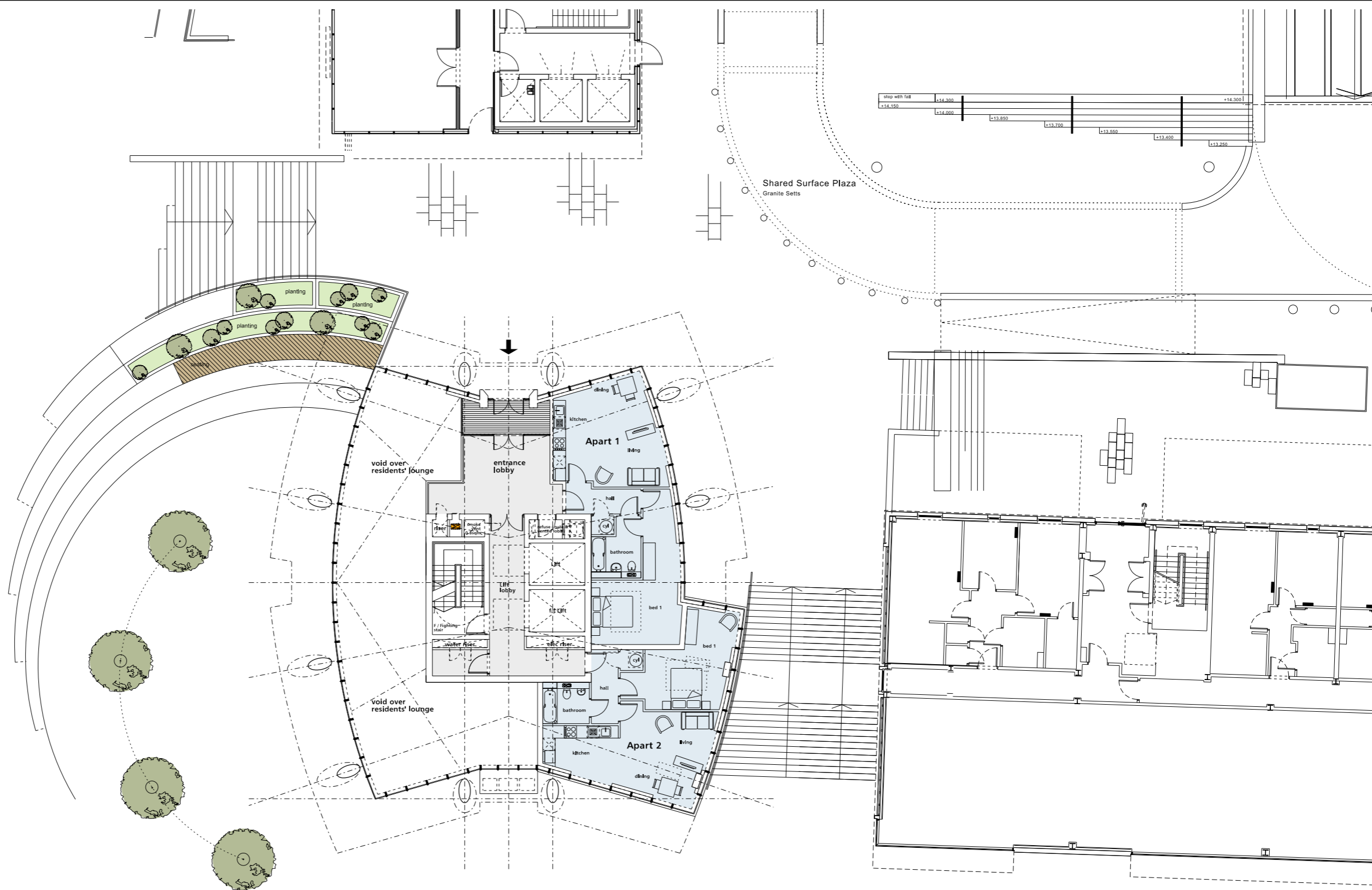


London | Liverpool | Kuala Lumpur | Telephone +44(0)151 243 5800

Project Title
 Sefton Quarter, Liverpool, Block 5
 Drawing Title
 Ground Floor Plan
 Client
 X1 Developments & Vermont CL
 Drawn By Date
 AEB April 2016
 Scale
 1:200
 Project No.
 P15-124
 Drawing No.
 02-03-001 D

www.fcharchitects.com
 © F.C.H.

PA



Rev D AEB 13.04.2016 Updated for Planning Issue.
 Rev C KT 08.04.2016 Issued for Draft Planning Issue.
 Rev B AG 30.03.2016 Updated to new setting out
 Rev A AEB 11.03.2016 Updated to pre-app comments

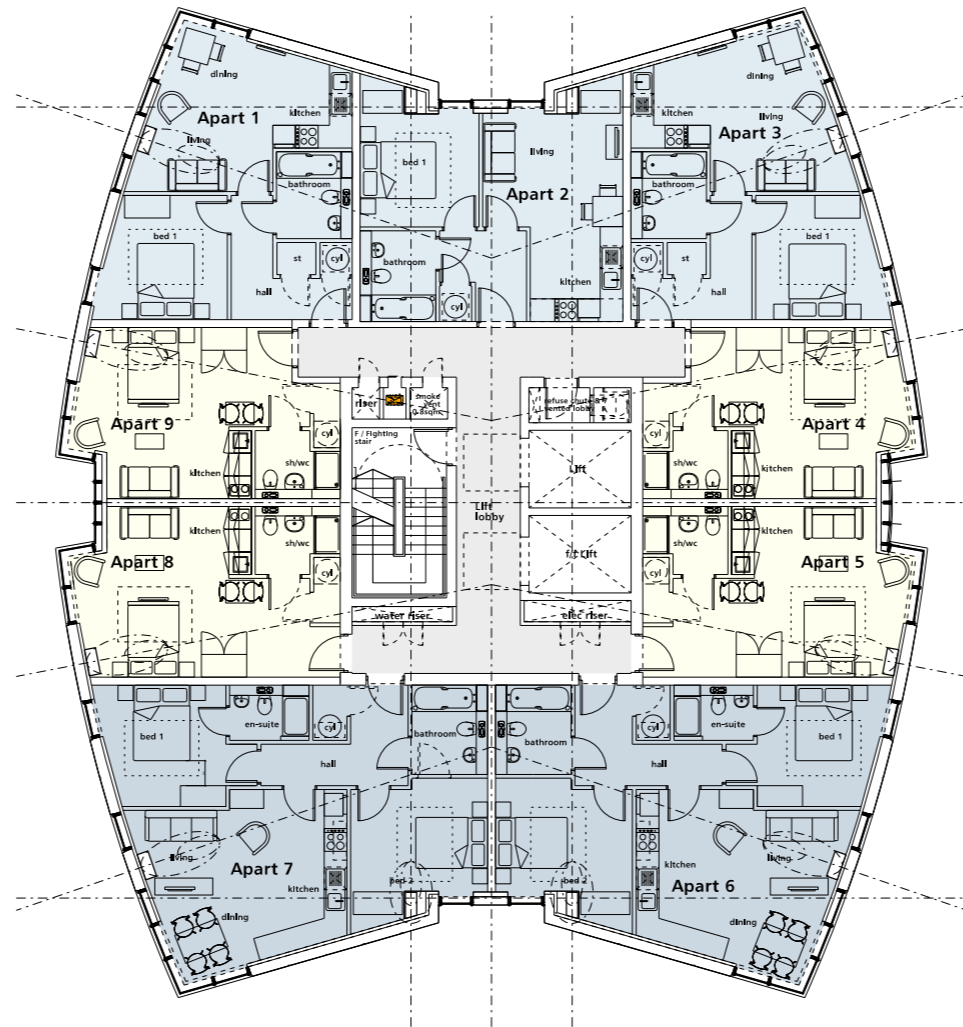
FALCONER CHESTER HALL



London | Liverpool | Kuala Lumpur | Telephone +44(0)151 243 5800

Project Title
Sefton Quarter, Liverpool, Block 5
 Drawing Title
First Floor Plan
 Client
X1 Developments and Vermont CL
 Drawn By Date
AEB April 2016
 Scale
1:200@A3
 Project No.
P15-124
 Drawing No.
02-03-002 D

www.fcharchitects.com
© F.C.H.



FALCONER CHESTER HALL



London | Liverpool | Kuala Lumpur | Telephone +44(0)151 243 5800

Rev E AEB 26.05.2016 Increased height option
 Rev D AEB 13.04.2016 Updated for Planning Issue.
 Rev C KT 08.04.2016 Issued for Draft Planning Issue.
 Rev B AG 30.03.2016 Updated to new setting out
 Rev A AEB 11.03.2016 Updated to pre-app comments

Project Title
 Sefton Quarter, Liverpool, Block 5

Drawing Title
 Standard Floor (2nd to 21st Floor)

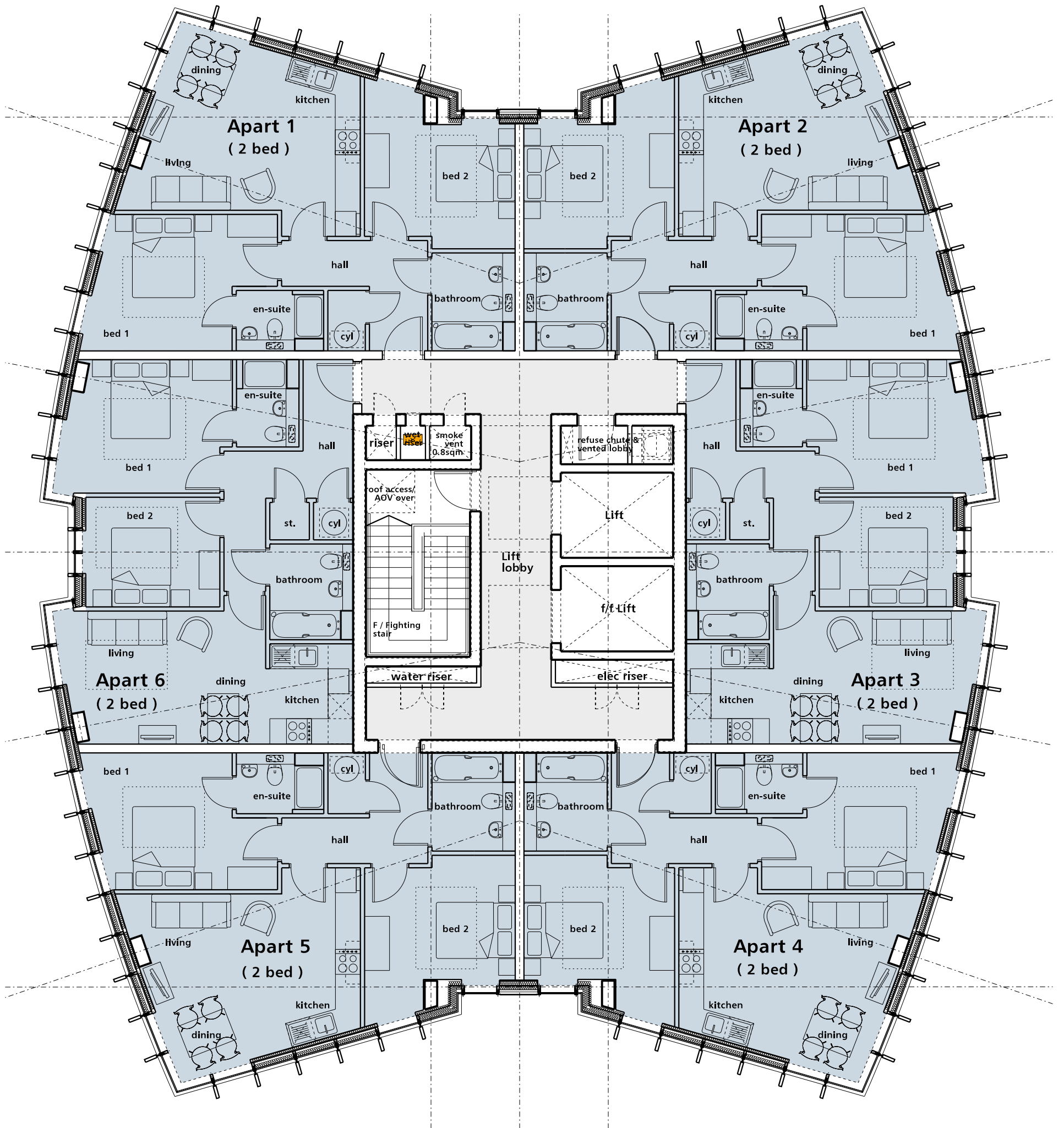
Client
 X1 Developments and Vermont CL

Drawn By Date
 AEB April 2016

Scale
 1:200 @ A3

Project No.
 P15-124

Drawing No.
 02-03-003 E



- Rev I AEB 26.08.2016 Drawing revision issue amended
- Rev H AEB 26.08.2016 Drawing revision issue amended
- Rev G AEB 01.07.2016 Updated for planning application
- Rev F AEB 13.06.2016 Updated footprint.
- Rev E AEB 26.05.2016 Increased height option.
- Rev D AEB 13.04.2016 Updated for Planning Issue.
- Rev C KT 08.04.2016 Issued for Draft Planning Issue.
- Rev B AG 30.03.2016 Updated to new setting out
- Rev A AEB 11.03.2016 Updated to pre-app comments

Project Title
Sefton Quarter, Liverpool - Block 5

Drawing Title
22nd Floor Plan

Client
Vermont CL

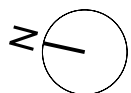
Drawn By Date
AEB March 2016

Scale
1:100@A3

Project No.
P15-124

Drawing No.
03-004 I

FALCONER CHESTER HALL

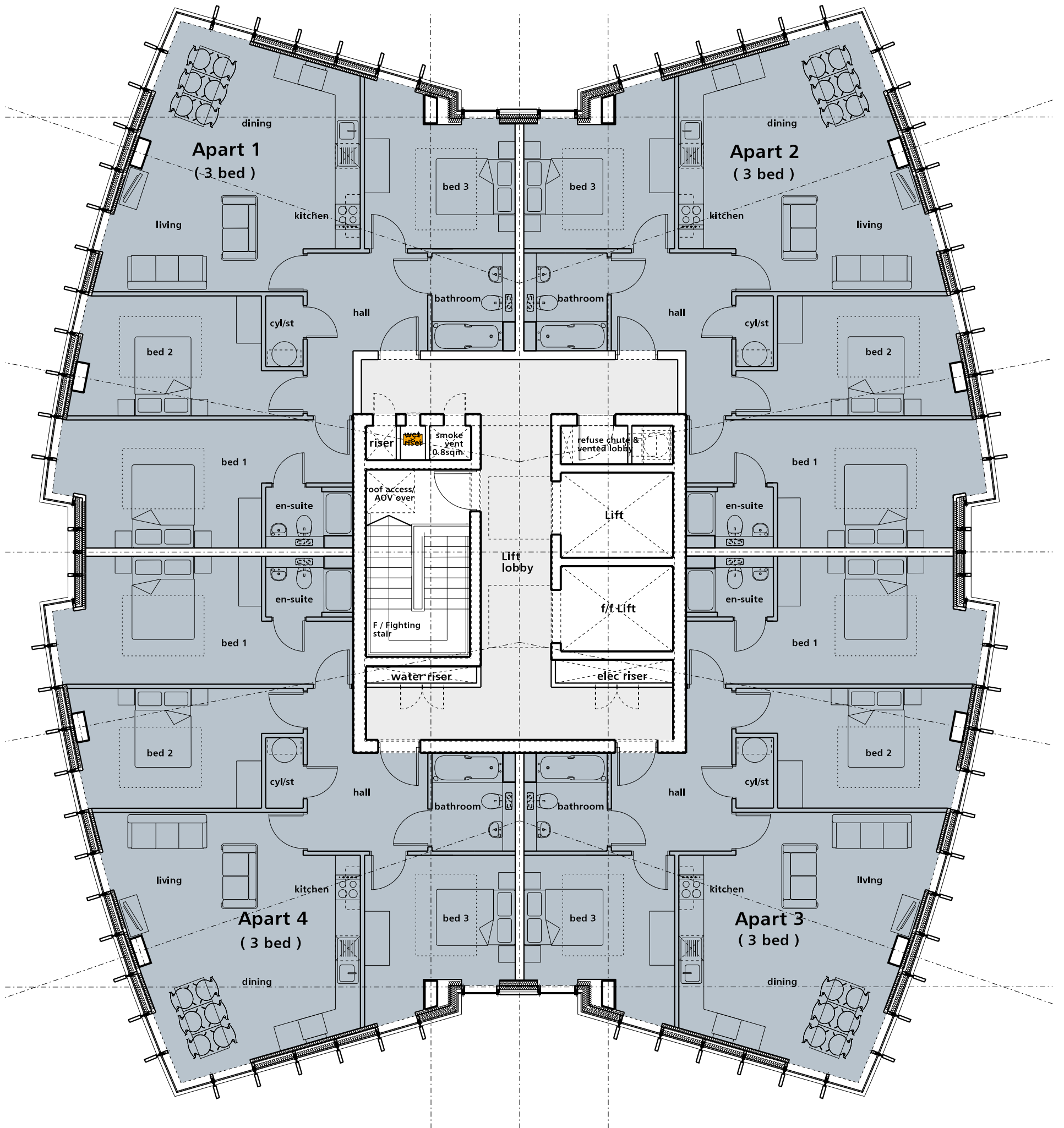


North Point



London | Liverpool | Kuala Lumpur | Telephone +44(0)151 243 5800

www.fcharchitects.com
© F.C.H.



- Rev I AEB 26.08.2016 Drawing revision issue amended
- Rev H AEB 26.08.2016 Drawing revision issue amended
- Rev G AEB 01.07.2016 Updated for planning application
- Rev F AEB 13.06.2016 Updated floorplan
- Rev E AEB 26.05.2016 Increased height option
- Rev D AEB 13.04.2016 Updated for Draft Planning Issue.
- Rev C KT 08.04.2016 Issued for Draft Planning Issue.
- Rev B AG 30.03.2016 Updated to new setting out
- Rev A AEB 11.03.2016 Updated to pre-app comments

Project Title
Sefton Quarter, Liverpool - Block 5

Drawing Title
23rd & 24th Floor Plan

Client
Vermont CL

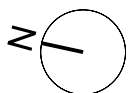
Drawn By Date
AEB March 2016

Scale
1:100@A3

Project No.
P15-124

Drawing No.
03-005 I

FALCONER CHESTER HALL



North Point



London | Liverpool | Kuala Lumpur | Telephone +44(0)151 243 5800

www.fcharchitects.com
© F.C.H.