

**APARTMENT 1**

**1 BED 40.5m<sup>2</sup> / 435ff<sup>2</sup>**

- bedroom - 3.4 x 4m
- kitchen / living room - 3.9 x 6.2m
- shower room - 2.2 x 1.2m
- hallway - 2.5 x 1.1m

**APARTMENT 2**

**1 BED 42m<sup>2</sup> / 451ff<sup>2</sup>**

- (terrace 12m<sup>2</sup> / 129ff<sup>2</sup>)
- bedroom - 2.9 x 4.3m
- living room - 4.4 x 4.5m
- kitchen - 2.3 x 2.1m
- shower room - 2.2 x 1.2m
- hallway - 3.4 x 1.1m

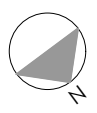
**APARTMENT 3**

**1 BED 48m<sup>2</sup> / 520ff<sup>2</sup>**

- bedroom - 4.7 x 3.7m
- living room - 4.7 x 4m
- kitchen - 2.1 x 2.3m
- shower room - 1.2 x 2.2m
- hallway - 1.2 x 2.9m



**QUAD**



**GROUND FLOOR PLAN  
AND SITE PLAN 1:100**  
5-6 ALT GROVE  
WIMBLEDON  
SW19 4DZ

**APARTMENT 4**

**1 BED 40m<sup>2</sup> / 435ff<sup>2</sup>**

bedroom - 3.4 x 4m  
kitchen / living room - 3.9 x 6.2m  
shower room - 2.2 x 1.2m  
hallway - 2.5 x 1.1m

**APARTMENT 5**

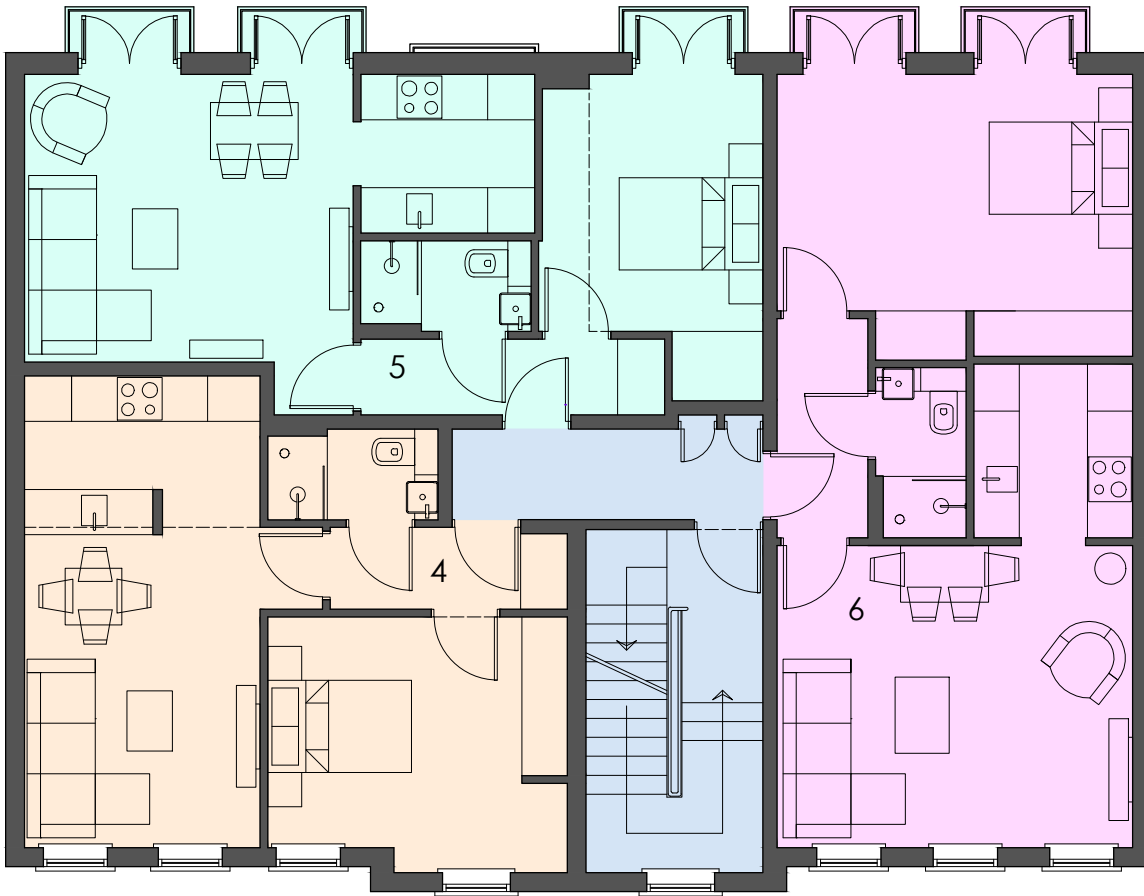
**1 BED 41.9m<sup>2</sup> / 451ff<sup>2</sup>**

bedroom - 2.9 x 4.3m  
living room - 4.4 x 4.5m  
kitchen - 2.3 x 2.1m  
shower room - 2.2 x 1.2m  
hallway - 3.4 x 1.1m

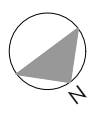
**APARTMENT 6**

**1 BED 48m<sup>2</sup> / 520ff<sup>2</sup>**

bedroom - 4.7 x 3.7m  
living room - 4.7 x 4m  
kitchen - 2.1 x 2.3m  
shower room - 1.2 x 2.2m  
hallway - 1.2 x 2.9m



QUAD



**FIRST FLOOR PLAN**

**\_1:100**

5-6 ALT GROVE  
WIMBLEDON  
SW19 4DZ

**APARTMENT 7**

**1 BED 36m<sup>2</sup> / 385ft<sup>2</sup>**

- bedroom - 3.2 x 3.4m
- kitchen / living room - 3.3 x 5.4m
- shower room - 2.2 x 1.2m
- hallway - 2.5 x 1.1m

**APARTMENT 8**

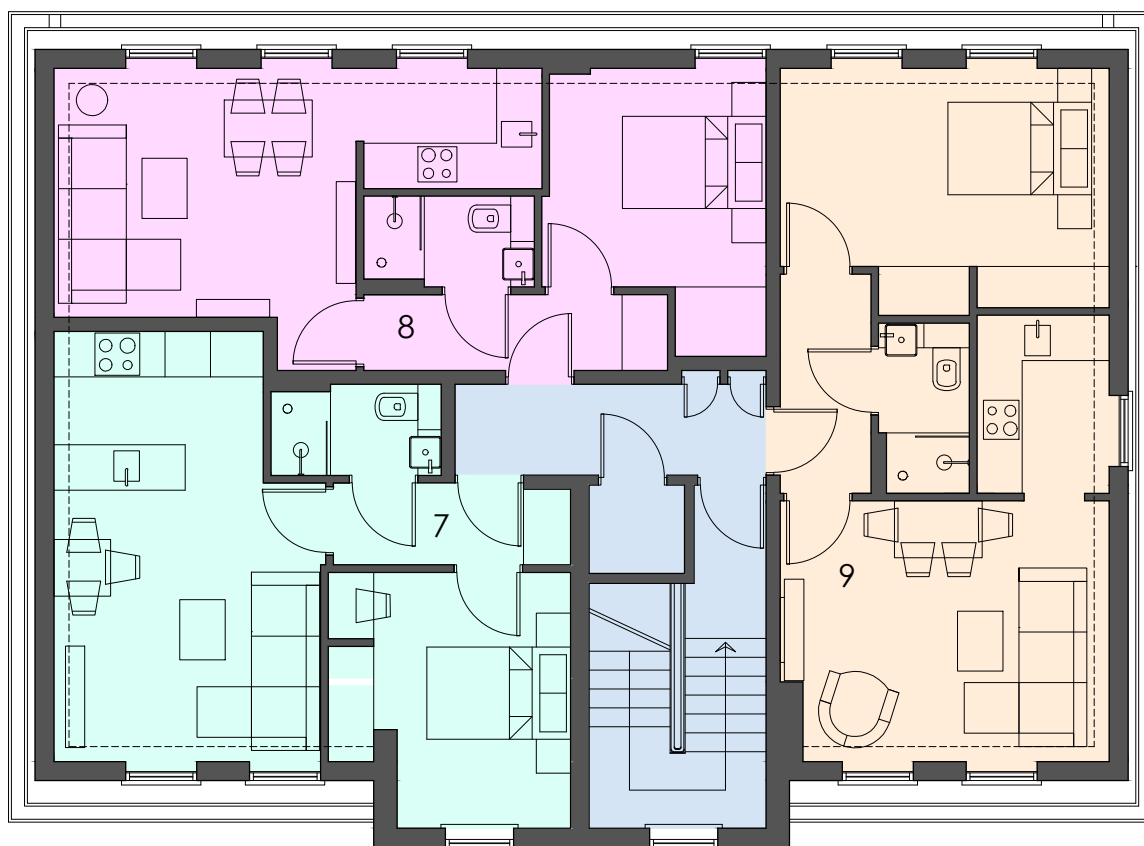
**1 BED 36m<sup>2</sup> / 383ft<sup>2</sup>**

- bedroom - 3 x 3.6m
- living room - 3.8 x 3m
- kitchen - 2.4 x 1.4m
- shower room - 2.2 x 1.2m
- hallway - 3.4 x 1.1m

**APARTMENT 9**

**1 BED 39.7m<sup>2</sup> / 427ft<sup>2</sup>**

- bedroom - 4.2 x 2.9m
- living room - 4.2 x 3.2m
- kitchen - 1.6 x 2.4m
- shower room - 1.2 x 2.2m
- hallway - 1.2 x 2.9m



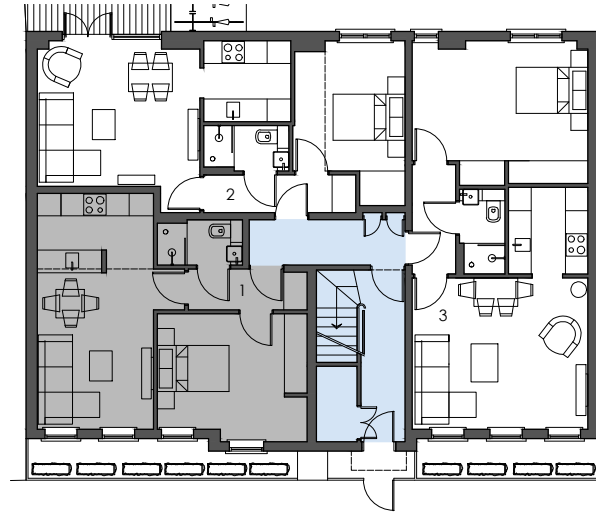
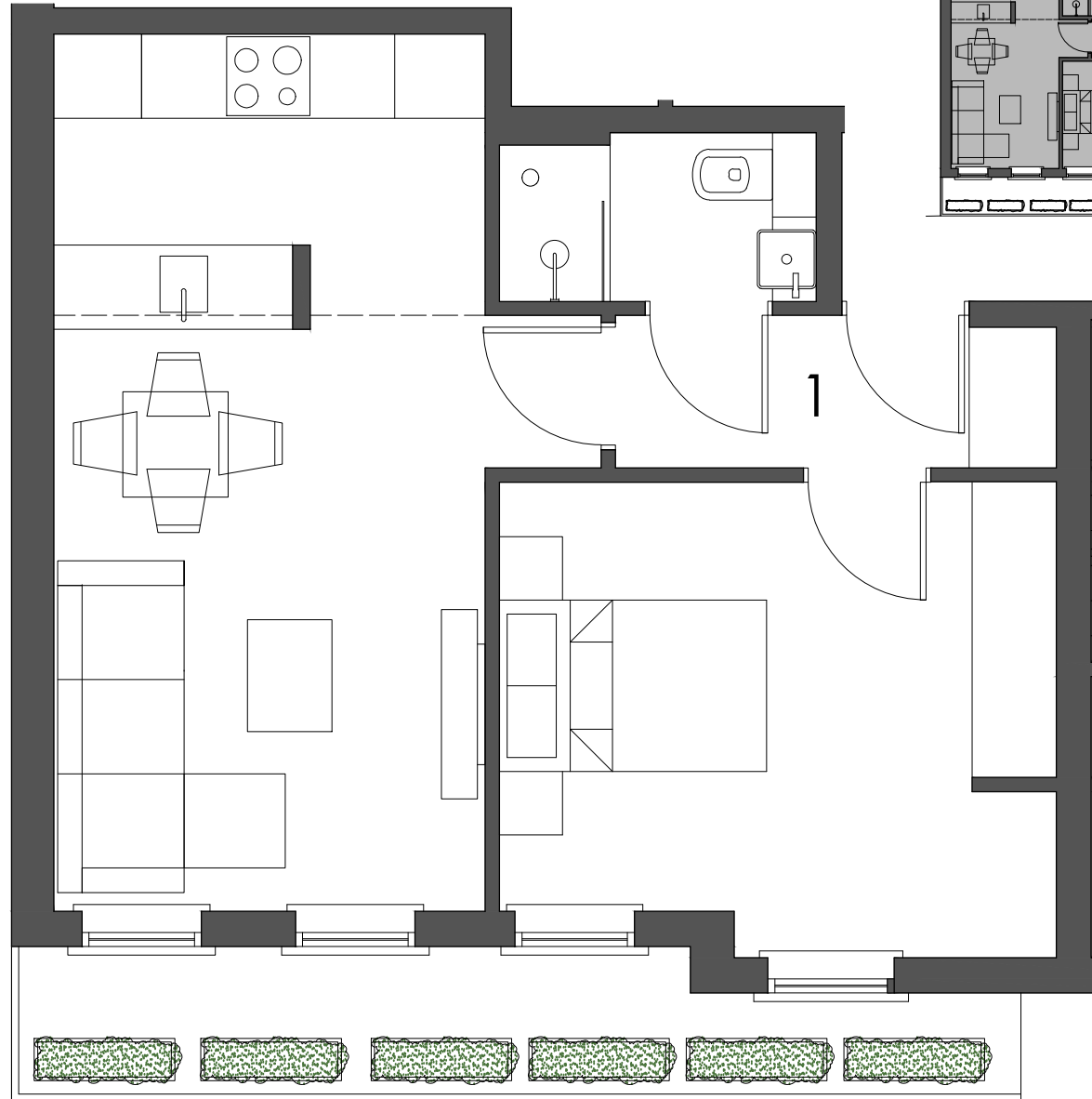
**QUAD**



**SECOND FLOOR PLAN**

**\_1:100**

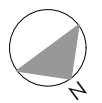
5-6 ALT GROVE  
WIMBLEDON  
SW19 4DZ



**APARTMENT 1**

1 BED 40.5m<sup>2</sup> / 435ff<sup>2</sup>  
 bedroom - 3.4 x 4m  
 kitchen / living room - 3.9 x 6.2m  
 shower room - 2.2 x 1.2m  
 hallway - 2.5 x 1.1m

QUAD



**APARTMENT 1 \_1:50**  
 6 ALT GROVE  
 WIMBLEDON  
 SW19 4DZ

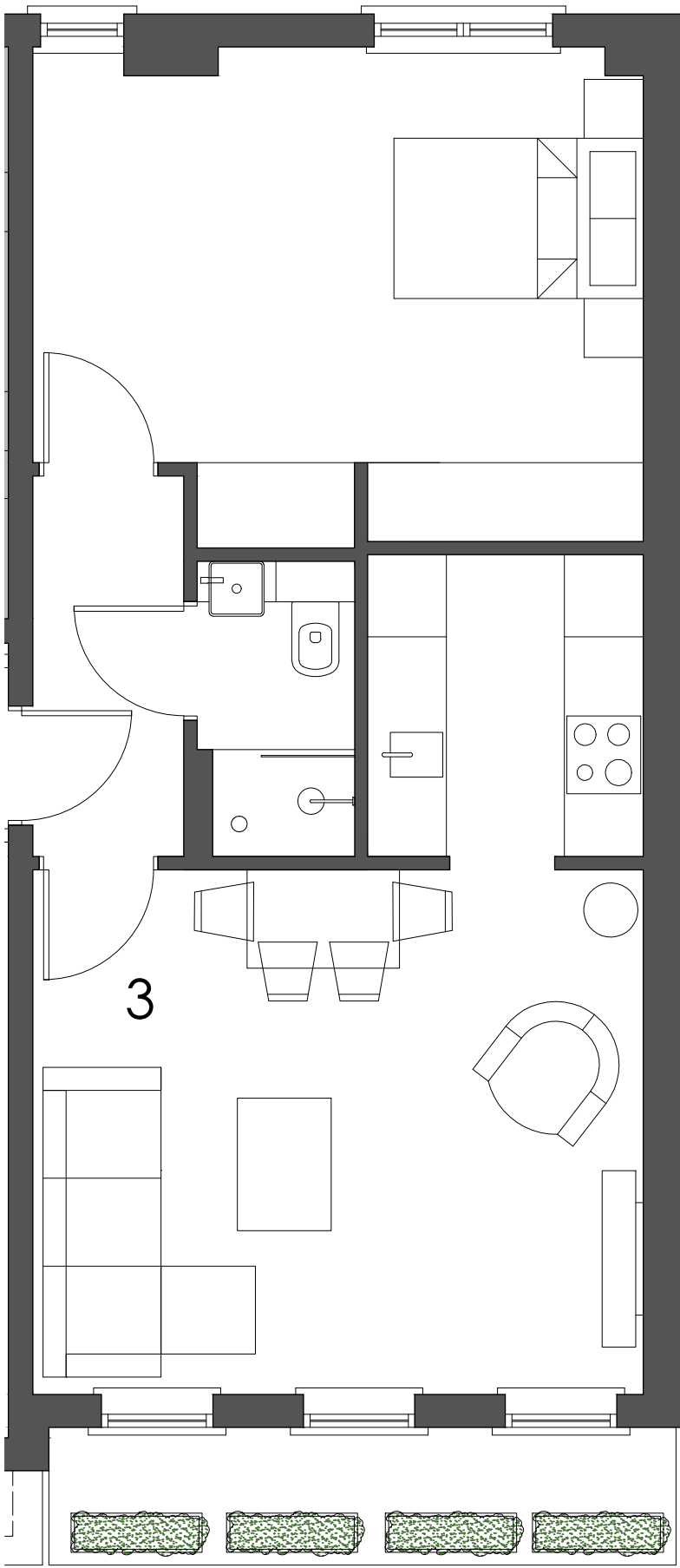


**APARTMENT 2**  
 1 BED 42m<sup>2</sup> / 451ff<sup>2</sup>  
 (terrace 12m<sup>2</sup> / 129ff<sup>2</sup>)  
 bedroom - 2.9 x 4.3m  
 living room - 4.4 x 4.5m  
 kitchen - 2.3 x 2.1m  
 shower room - 2.2 x 1.2m  
 hallway - 3.4 x 1.1m

QUAD



**APARTMENT 2\_1:50**  
 6 ALT GROVE  
 WIMBLEDON  
 SW19 4DZ



**APARTMENT 3**

**1 BED 48m<sup>2</sup> / 520ft<sup>2</sup>**

bedroom - 4.7 x 3.7m

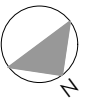
living room - 4.7 x 4m

kitchen - 2.1 x 2.3m

shower room - 1.2 x 2.2m

hallway - 1.2 x 2.9m

**QUAD**

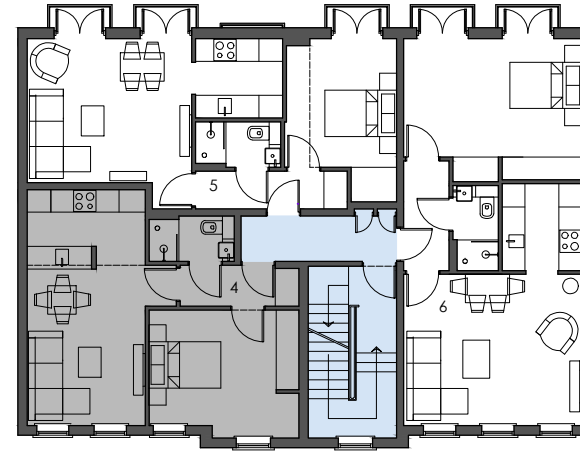
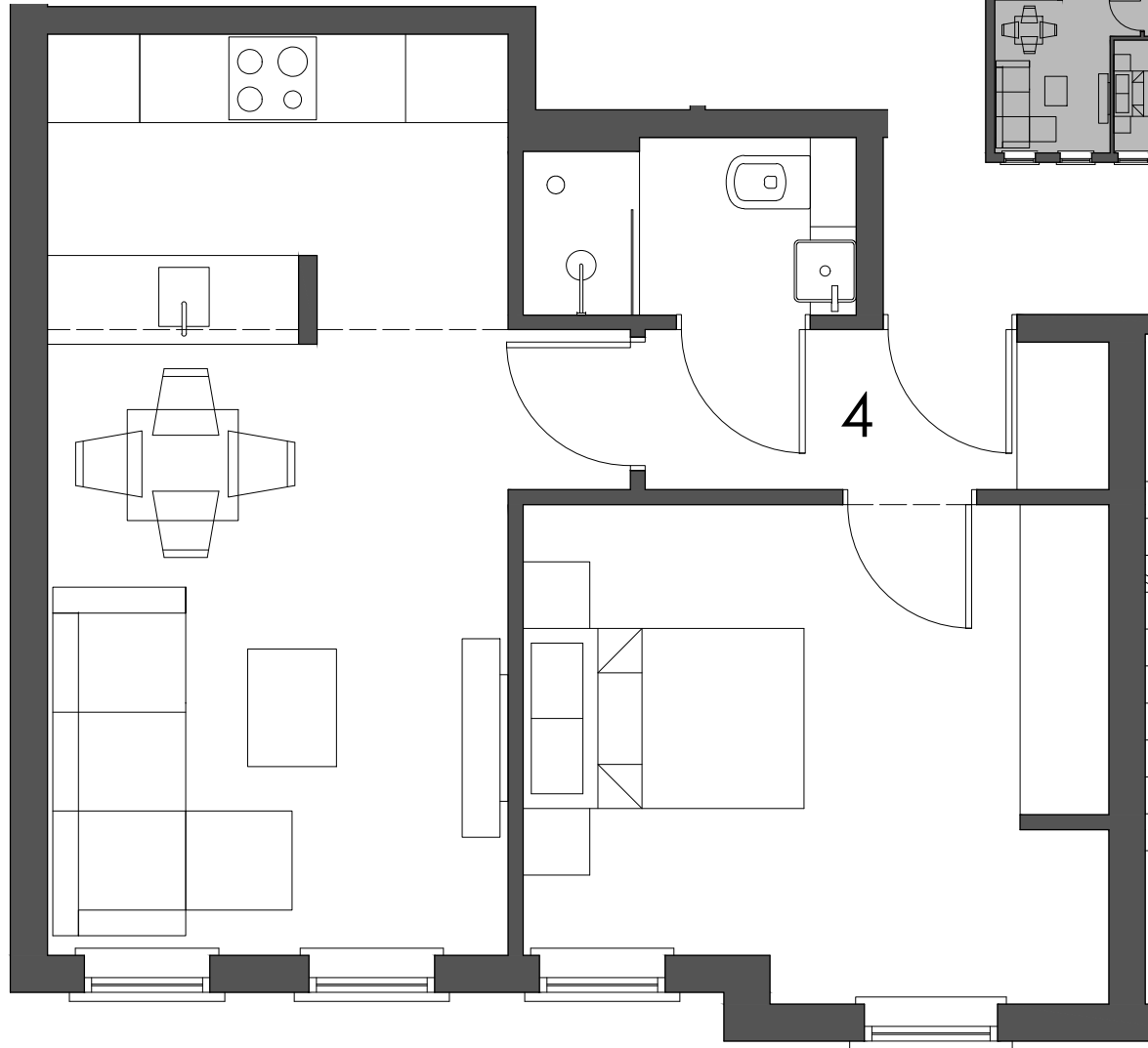


**APARTMENT 3 \_1:50**

6 ALT GROVE

WIMBLEDON

SW19 4DZ



**APARTMENT 4**

**1 BED 40m<sup>2</sup> / 435ft<sup>2</sup>**

bedroom - 3.4 x 4m

kitchen / living room - 3.9 x 6.2m

shower room - 2.2 x 1.2m

hallway - 2.5 x 1.1m

QUAD

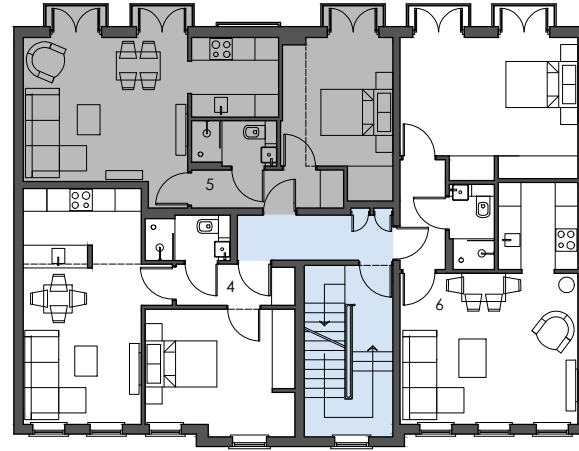


**APARTMENT 4 \_1:50**

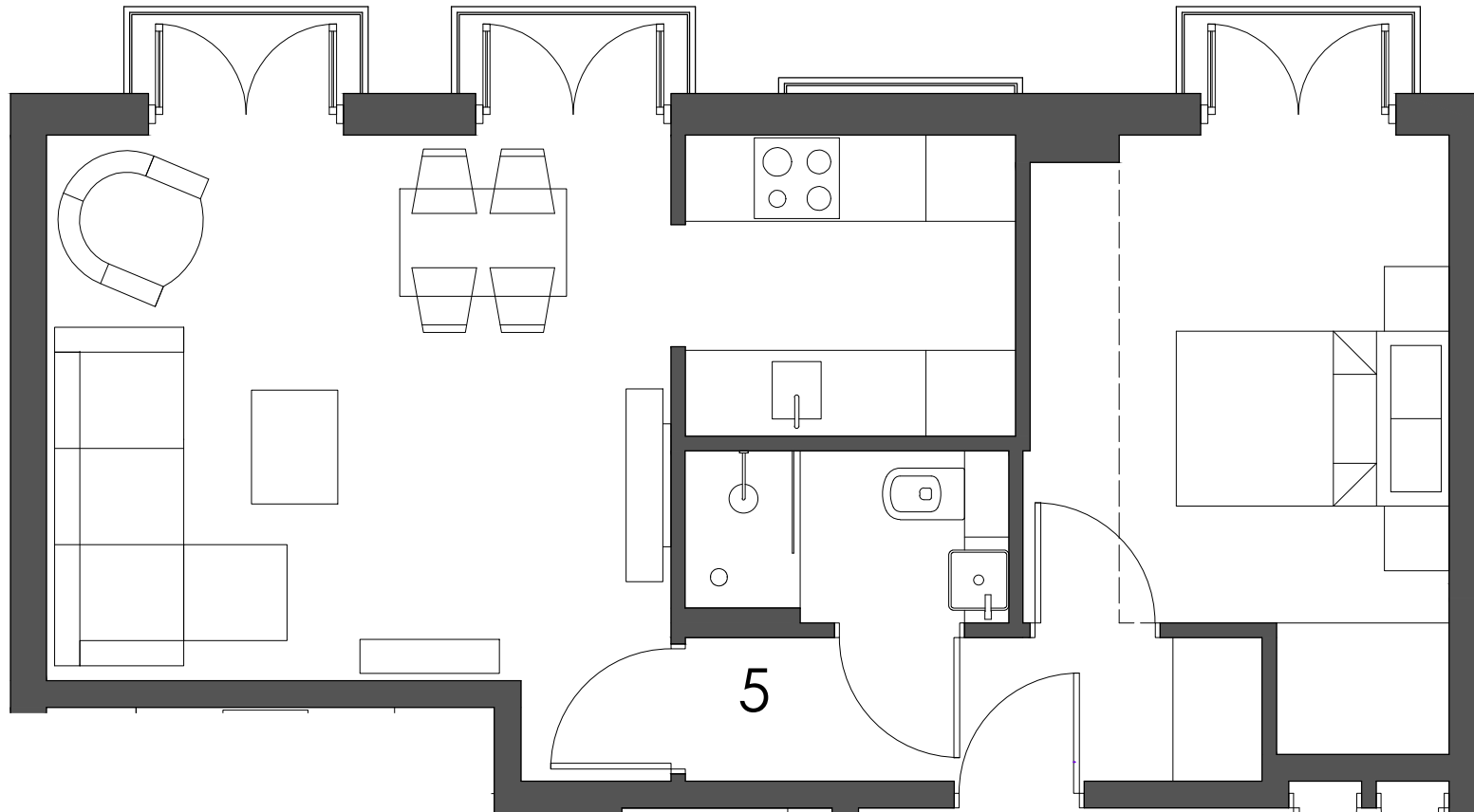
6 ALT GROVE

WIMBLEDON

SW19 4DZ



**APARTMENT 5**  
 1 BED 41.9m<sup>2</sup> / 451ft<sup>2</sup>  
 bedroom - 2.9 x 4.3m  
 living room - 4.4 x 4.5m  
 kitchen - 2.3 x 2.1m  
 shower room - 2.2 x 1.2m  
 hallway - 3.4 x 1.1m

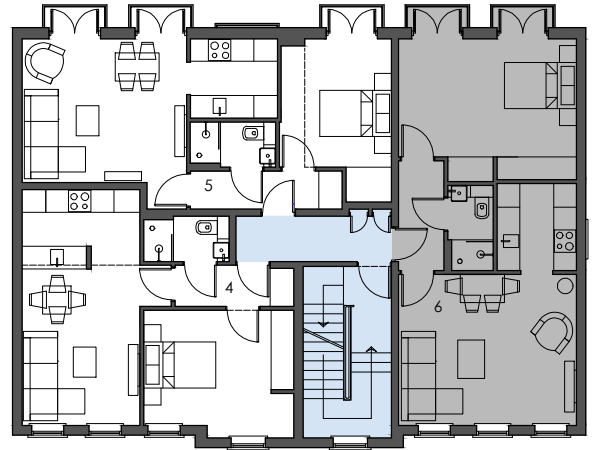
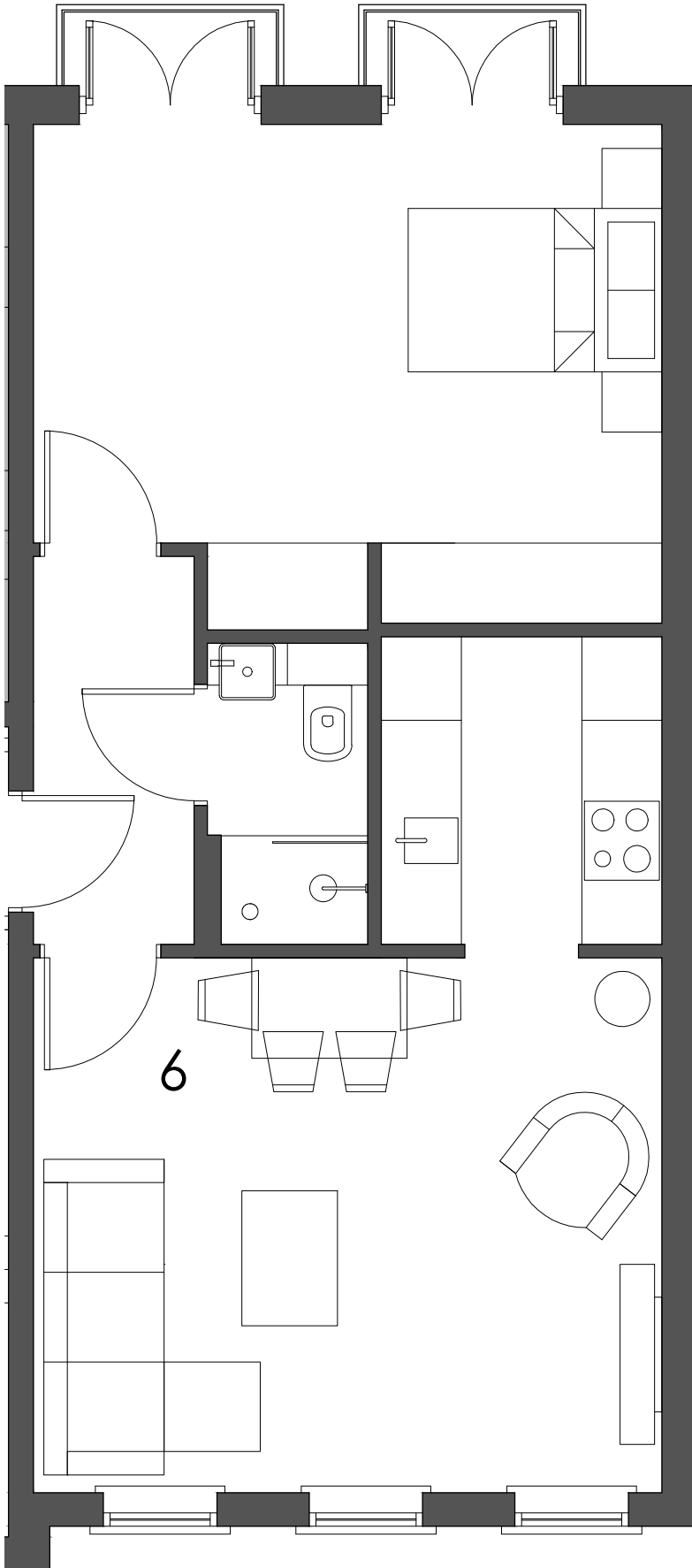


QUAD



**APARTMENT 5\_1:50**  
 6 ALT GROVE  
 WIMBLEDON  
 SW19 4DZ





**APARTMENT 6**

**1 BED 48m<sup>2</sup> / 520ft<sup>2</sup>**

bedroom - 4.7 x 3.7m

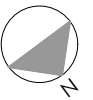
living room - 4.7 x 4m

kitchen - 2.1 x 2.3m

shower room - 1.2 x 2.2m

hallway - 1.2 x 2.9m

QUAD

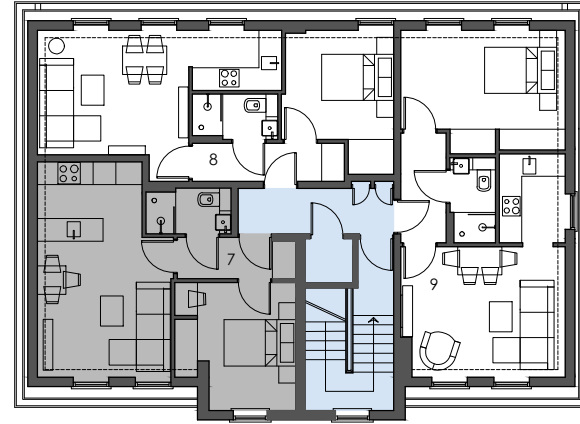
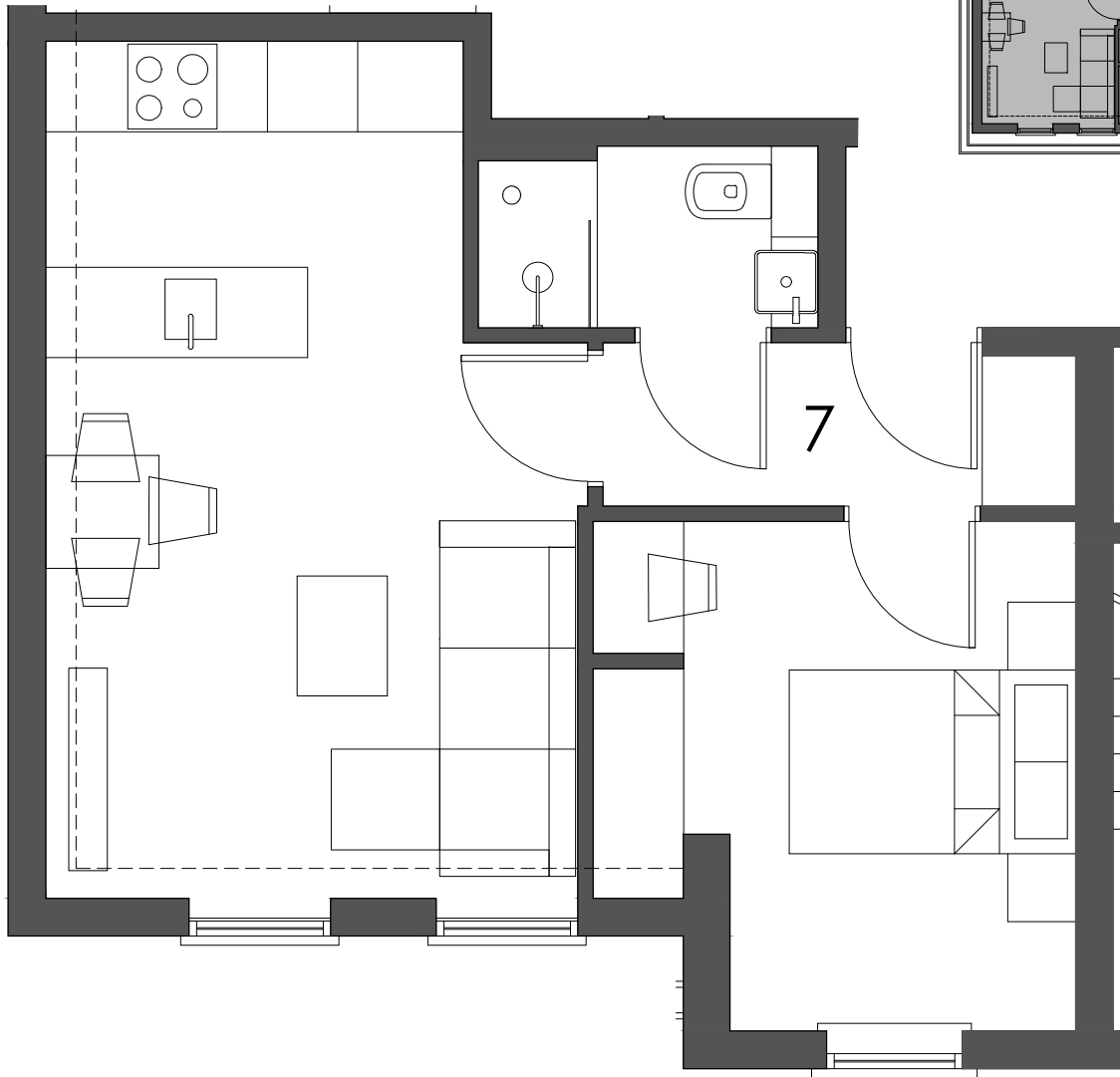


**APARTMENT 6 \_1:50**

6 ALT GROVE

WIMBLEDON

SW19 4DZ



**APARTMENT 7**

**1 BED 36m<sup>2</sup> / 385ff<sup>2</sup>**

bedroom - 3.2 x 3.4m

kitchen / living room - 3.3 x 5.4m

shower room - 2.2 x 1.2m

hallway - 2.5 x 1.1m

QUAD

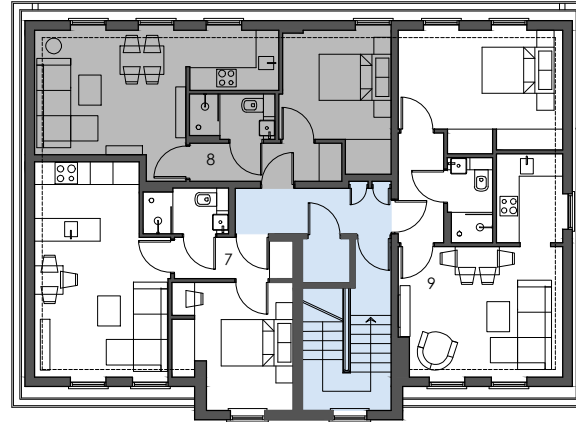


**APARTMENT 7 \_1:50**

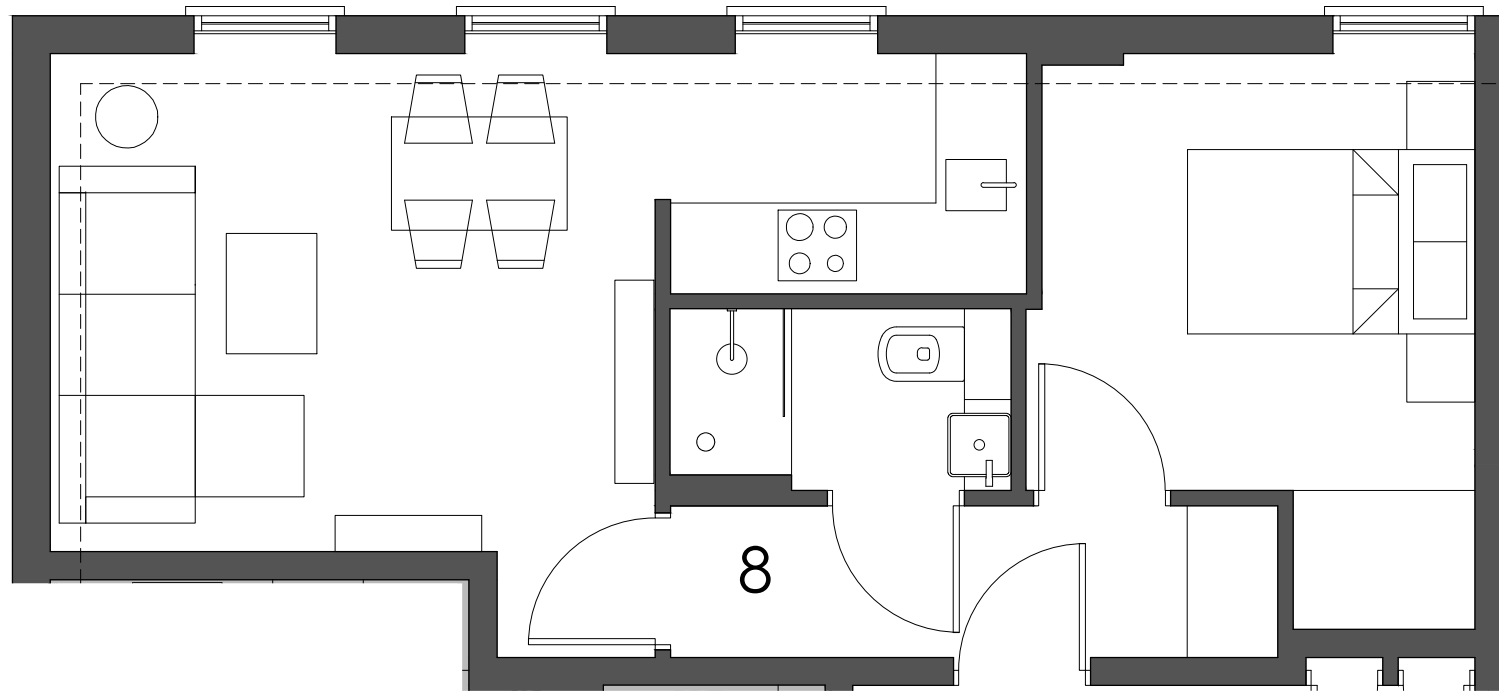
6 ALT GROVE

WIMBLEDON

SW19 4DZ



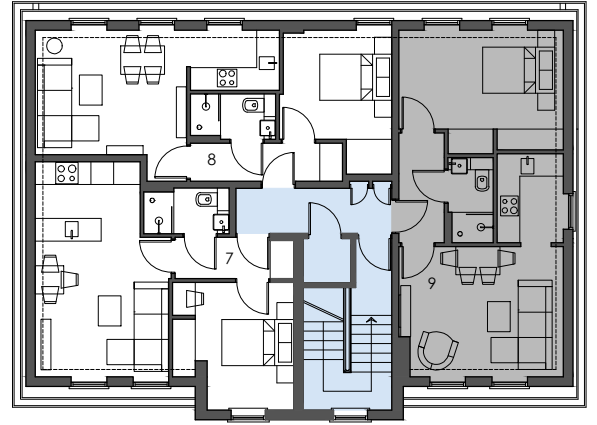
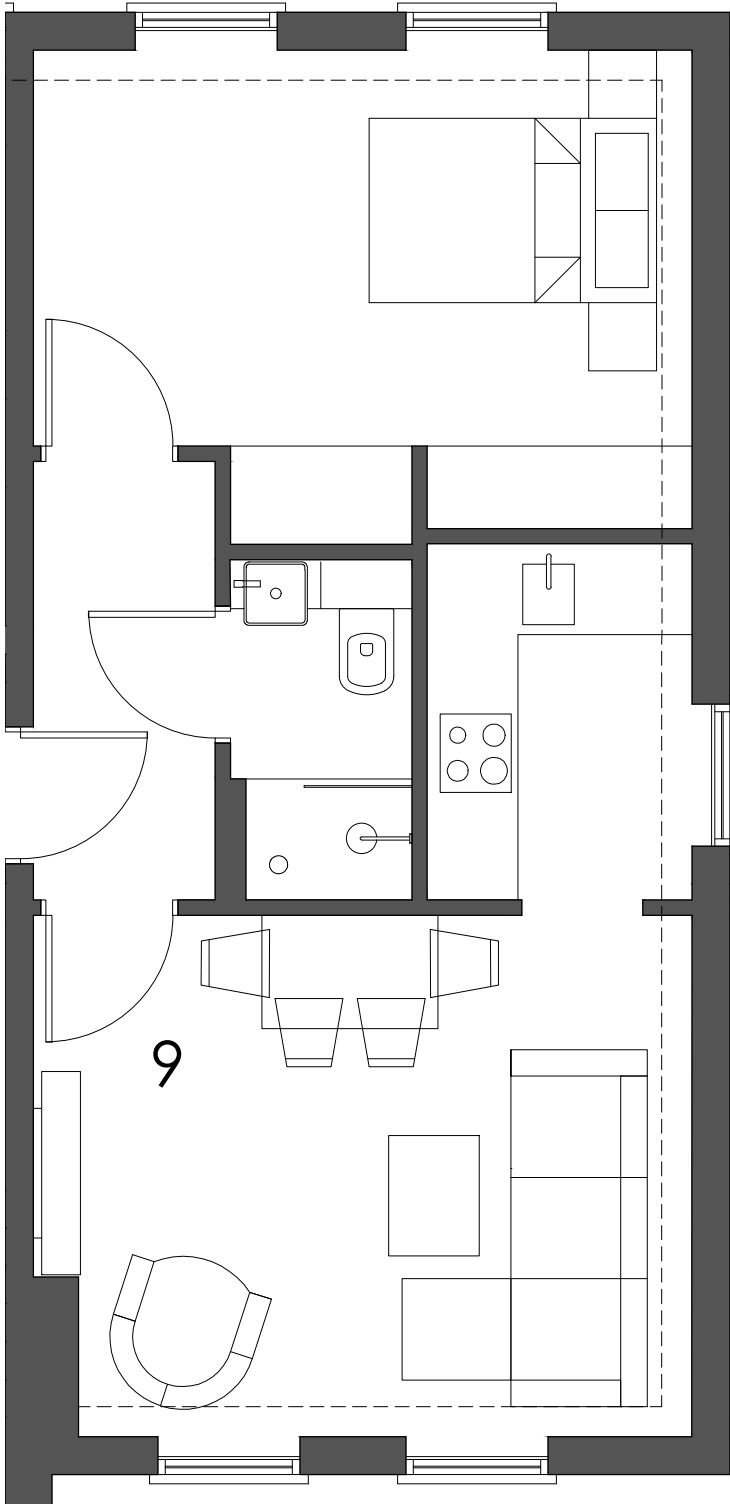
**APARTMENT 8**  
1 BED 36m<sup>2</sup> / 383ff<sup>2</sup>  
bedroom - 3 x 3.6m  
living room - 3.8 x 3m  
kitchen - 2.4 x 1.4m  
shower room - 2.2 x 1.2m  
hallway - 3.4 x 1.1m



QUAD

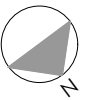


**APARTMENT 8 \_1:50**  
6 ALT GROVE  
WIMBLEDON  
SW19 4DZ



**APARTMENT 9**  
**1 BED 39.7m<sup>2</sup> / 427ft<sup>2</sup>**  
 bedroom - 4.2 x 2.9m  
 living room - 4.2 x 3.2m  
 kitchen - 1.6 x 2.4m  
 shower room - 1.2 x 2.2m  
 hallway - 1.2 x 2.9m

**QUAD**



**APARTMENT 9 \_1:50**  
 6 ALT GROVE  
 WIMBLEDON  
 SW19 4DZ