

**iNANLAR**

terrace lotus

THE NEW ICON OF E-5

**iNANLAR**  
1965  
51 years

**iNANLAR**  
terrace lotus



**iNANLAR**

terrace lotus

UNIQUE IN THE REGION  
DISTINCTIVE ARCHITECTURE  
ONLY 149 RESIDENCES

THE NEW ICON OF E-5



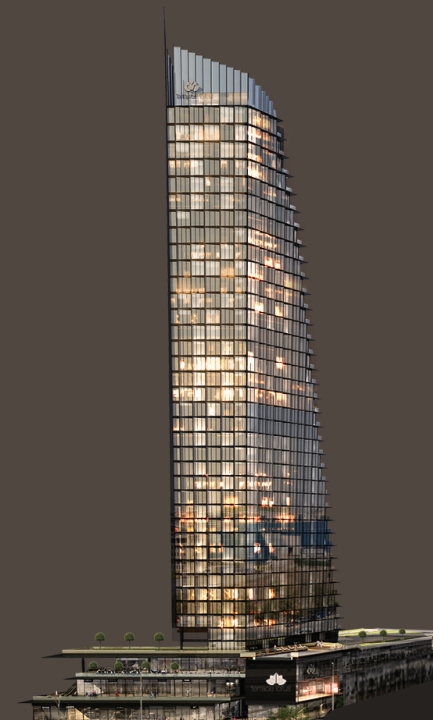
# PRIVILEGES OF TERRACE LOTUS

- The icon project of the region with its architectural concept and state-of-art privileges
- One of Istanbul's highest towers at 150 meters
- Sea or city view options in living spaces
- Large living spaces with balconies
- Real spaciousness with 3.40 m ceiling height
- Windows that can be opened in every apartment and in every room
- Fine structure guarantee for 5 years, rough structure guarantee for 10 years and administrative services for the first 2 years



# PROJECT ID

Architectural Project Owner	iNANLAR
Net Area m <sup>2</sup>	10.026 m <sup>2</sup>
Total Construction Area m <sup>2</sup>	57.464,5
Total Area for Sale m <sup>2</sup>	40.030,7
Total Residential Area for Sale m <sup>2</sup>	22.269,7
Total Office Area for Sale m <sup>2</sup>	3.089,3
Total Commercial Area for Sale	14.672 m <sup>2</sup>
Social Facilities	1.050 m <sup>2</sup>
No of Blocks	1
No. of Storeys	2 parking floors +3 market floors +36 tower storeys +1 roof
Independent Unit	149 residence + 2 office + 1 social area + 44 market =195 independent section
Distribution of Apartment Types	52 unit (1+1); 2 unit (1,5+1); 58 unit (2+1); 6 unit (3+1); 31 unit (4+1)
1+1	Min (89,5 m <sup>2</sup> ) - Max (125,3 m <sup>2</sup> )
1,5+1	Min (130,6 m <sup>2</sup> ) - Max (140,0 m <sup>2</sup> )
2+1	Min (137,2m <sup>2</sup> ) - Max (179,9 m <sup>2</sup> )
3+1	Min (214,4m <sup>2</sup> ) - Max (227,2 m <sup>2</sup> )
4+1	Min (223,9m <sup>2</sup> ) - Max (231,8 m <sup>2</sup> )





# İSTANBUL, CAPITAL OF THE WORLD, WHERE 2 CONTINENTS MEET

- The world's favorite hub point
- Meeting point of 2 continents and countless cultures
- A global attraction center with its mega projects like 3<sup>rd</sup> airport, 3<sup>rd</sup> bridge and Canal Istanbul project proposal



İSTANBUL, THE CENTER OF DEVELOPMENT  
THE GLOBAL TREND OF INVESTMENT

Regularly increasing population  
Ideally planned development  
Developing and growing living areas  
Increasing value with the rising investment demands  
Beylikdüzü...

View from the 37<sup>th</sup> floor of Terrace Lotus (Drone photo)

FUNCTIONAL **PROFITABLE** TRUSTWORTHY AESTHETIC



## A STRATEGIC LOCATION FOR INDUSTRY AND TRANSPORTATION

- A door opening to the world in 15 minutes with Atatürk Airport
- Naval trade with Ambarlı Port
- Sea tourism with its modern marina
- TUYAP Congress Center in 6 mins, CNR Expo in 20 mins
- Strong economical structure by being both residential and industrial region







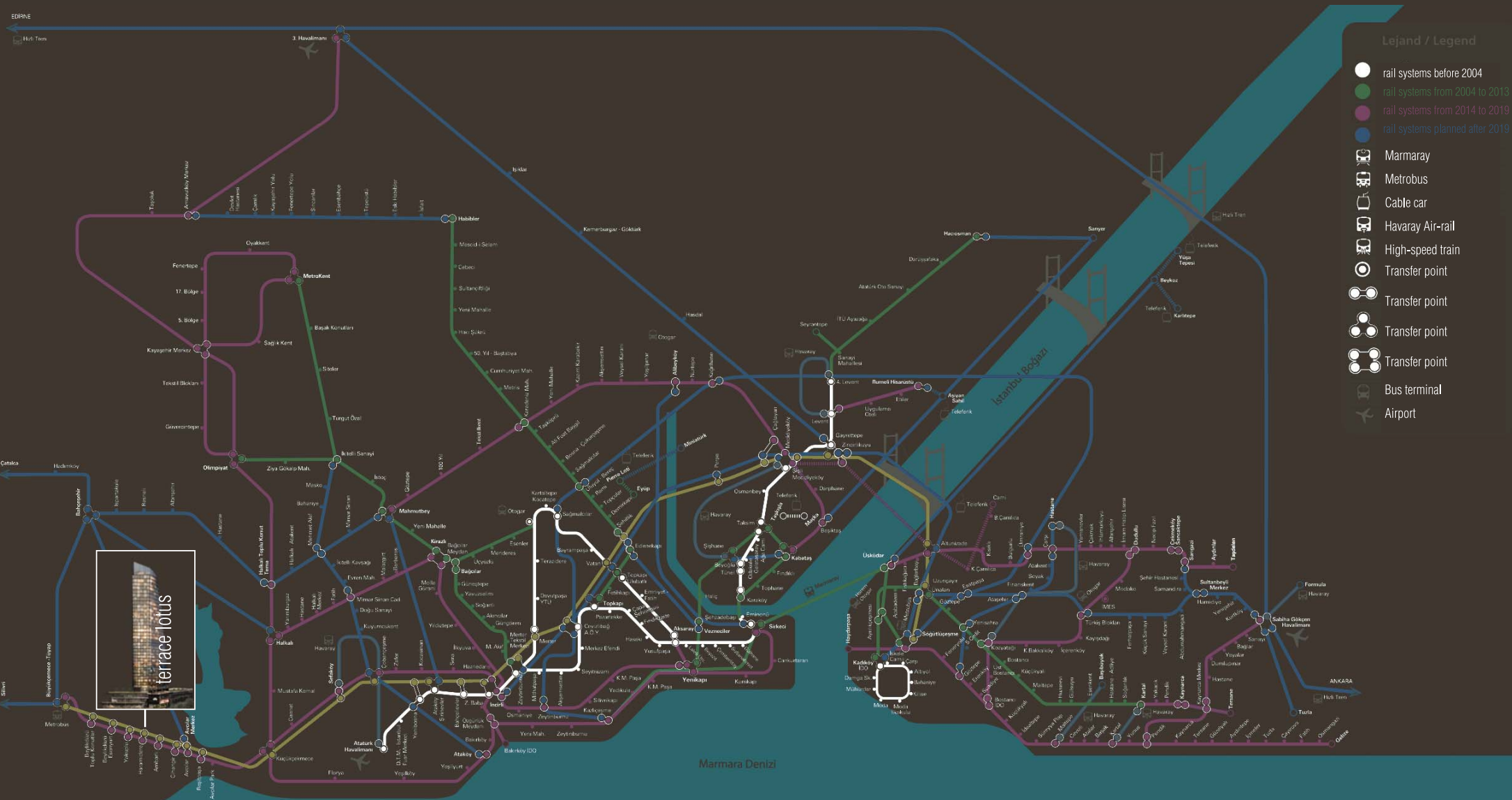
## IN CLOSE PROXIMITY TO EVERYWHERE

- Atatürk Airport 15 min
- 3rd Airport 25 min
- Metrobus 1 min
- New metroline to be in service in 2019 1 min
- TEM Highway 3 min
- Marmaray 17 min
- 15 July Martyrs Bridge (1st Bridge) 25 min
- Fatih Sultan Mehmet Bridge (2nd Bridge) 30 min
- Yavuz Sultan Selim Bridge (3rd Bridge) 35 min
- Mecidiyeköy 25 min
- Taksim 20 min
- Maslak 30 min
- TUYAP Congress Center 6 min
- Ambarlı Port 15 min
- CNR Expo 10 min



# TERRACE LOTUS

## CLOSE TO THE NEW METROLINE TO BE IN SERVICE IN 2019



terrace lotus

# iNANLAR

terrace lotus

## TERRACE LOTUS

RIGHT ON THE E-5 HIGHWAY, THE MAIN ARTERIAL OF İSTANBUL

← BEYLİKDÜZÜ

LEVENT →

Arel University

TUYAP Congress Center

Hadımköy Toll Gates  
Yeni Hayat Medical Center  
Esenyurt State Hospital  
Esenyurt Municipality Cultural Center

Doğuş Automotive

iNANLAR  
terrace mix

Doğa College

iNANLAR  
terrace tema

Atatürk Olympiad Stadium

terrace lotus  
Beylikdüzü

Aydın University

Topkapı

Yeniüyzüyl University

E-5

Beykent University  
Dünya Göz  
(World Ophtalmology) Hospital  
Okyanus College  
Medicana Hospital  
Beylikdüzü Organized  
Industrial Zone  
Medilife Hospital

West Marina  
Ambarlı Port

Yakuplu Port



Marmara Sea

Acibadem Beylikdüzü Surgical  
Medicine Center

Metrobus Stop

Torium Shopping Center

New Metroline to be in service in 2019

Istanbul University

Acibadem Hospital

Gelifirm University

Istanbul Aquarium

CNR Expo

Doğa College

International Hospital

Bakırköy

Taksim

Mecidiyeköy

ido  
Sea Bus

Atatürk Airport

ido  
Bakırköy  
Sea Bus

ido  
Yenikapı  
Sea Bus

- Education
- Health
- Activity
- Hubs

# FAST AND EASY ACCESS TO ALL İSTANBUL



METROBUS LINE  
1 min



E-5 HIGHWAY  
1 min



TEM TOLL GATES  
3 min



İDO SEA BUS  
6 min



MARMARAY  
17 min



ATATÜRK AIRPORT  
15 min



15 JULY MARTYRS BRIDGE  
25 min



FATİH SULTAN MEHMET BRIDGE  
30 min

# QUALITY EDUCATIONAL ALTERNATIVES



İSTANBUL UNIVERSITY  
5 min



BEYKENT UNIVERSITY  
16 min



AREL UNIVERSITY  
26 min



GELİŞİM UNIVERSITY  
3 min



ESENYURT UNIVERSITY  
5 min



DOĞA COLLEGE  
5 min



OKYANUS COLLEGE  
2 min

## VERY CLOSE TO A HEALTHY LIFE



ACIBADEM HOSPITAL  
5 min



MEDICANA HOSPITAL  
5 min



DÜNYA GÖZ HOSPITAL  
9 min



MEDILIFE HOSPITAL  
13 min



ANADOLU HOSPITAL  
3 min



INTERNATIONAL HOSPITAL  
19 min

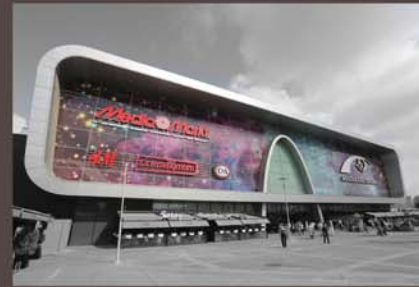
# RIGHT IN THE CENTER OF SHOPPING



TORIUM SHOPPING CENTER  
1 min



AKBATI SHOPPING CENTER  
10 min



MARMARA PARK SHOPPING CENTER  
6 min



PELICAN MALL  
3 min



REAL  
5 min



CARREFOURSA  
4 min



BAUHAUS  
5 min



MEDIA MARKT  
4 min



## ALL THE PLEASURES OF LIFE CAME TOGETHER

Modern shopping center with 44 shops    Bicycle parking spaces

Indoor swimming pool

Charging places for electrical vehicles

Fitness center and sauna

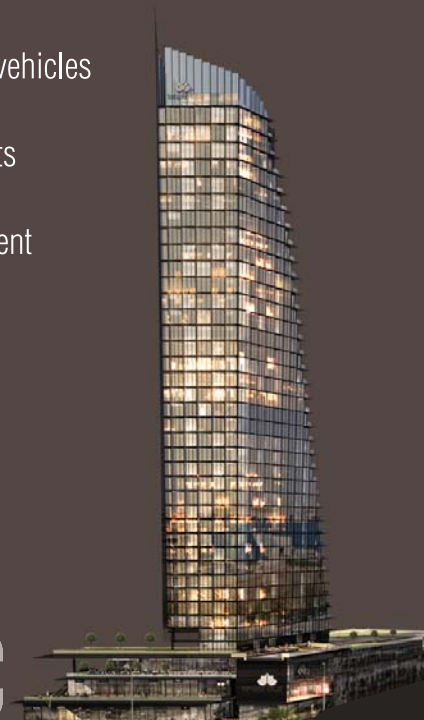
Indoor and outdoor parking lots

Playground for children

Private space for every apartment

Social facilities will function with a membership system that will be available to everyone.  
If not used, their expenses will not be included in the monthly fees.

FUNCTIONAL PROFITABLE TRUSTWORTHY AESTHETIC







## AESTHETICALLY FUNCTIONAL ACCESIBLE LUXURY

Reflection of architectural concept in the interior designs

Residence alternatives ranging from 1+1 to 4+1, prepared with the best quality interior design elements

- Residence life in hotel comfort
- One of İstanbul's highest towers at 150 meters
- Really spacious with 3.40 m ceiling height
- Windows that can be opened in every apartment and in every room
- Living spaces with balconies that start from 90 sqm
- Sea or city view options in living spaces
- Private storage room for every apartment
- Technological infrastructure
- VRF air conditioning systems
- 24/7 security with CCTV



# TYPE 1+1 WITH BALCONY

GROSS 97.2 SQM. + STORAGE ROOM\*

**iNANLAR**

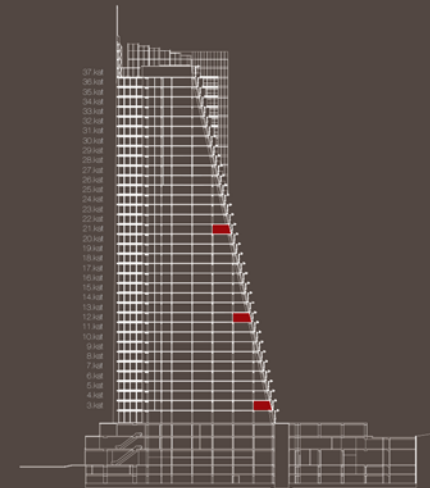
terrace lotus



- a. entrance
- b. living room-kitchen
- c. main bedroom
- d. bathroom
- e. balcony
- f. special open area beyond balcony
- g. storage room as part of the administration plan\*
- h. parking lot as part of the administration plan\*\*

You can contact our regional office to see the different residence types.

\*The storage units are administration based and show variability in gross size for every independent unit.

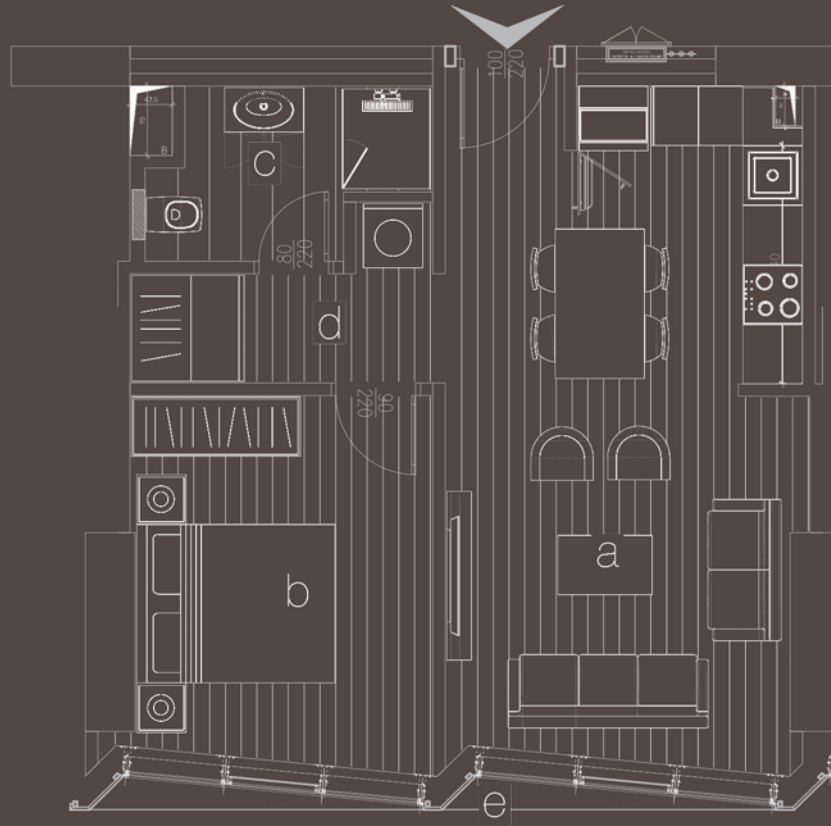


# TYPE 1+1

GROSS 83.6 SQM. + STORAGE ROOM\*

**iNANLAR**

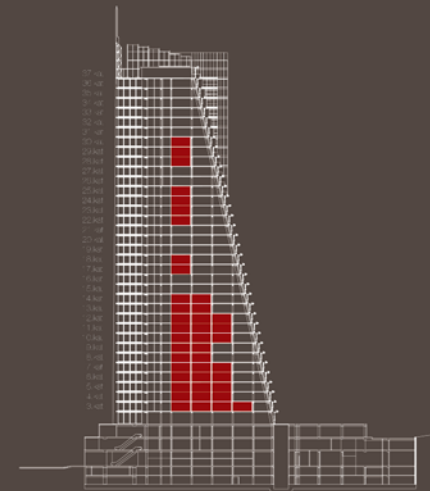
terrace lotus



- a. living room-kitchen
- b. main bedroom
- c. bathroom
- d. corridor
- e. special open area beyond balcony
- f. storage room as part of the administration plan\*
- g. parking lot as part of the administration plan\*\*

You can contact our regional office to see the different residence types.

\*The storage units are administration based and show variability in gross size for every independent unit.

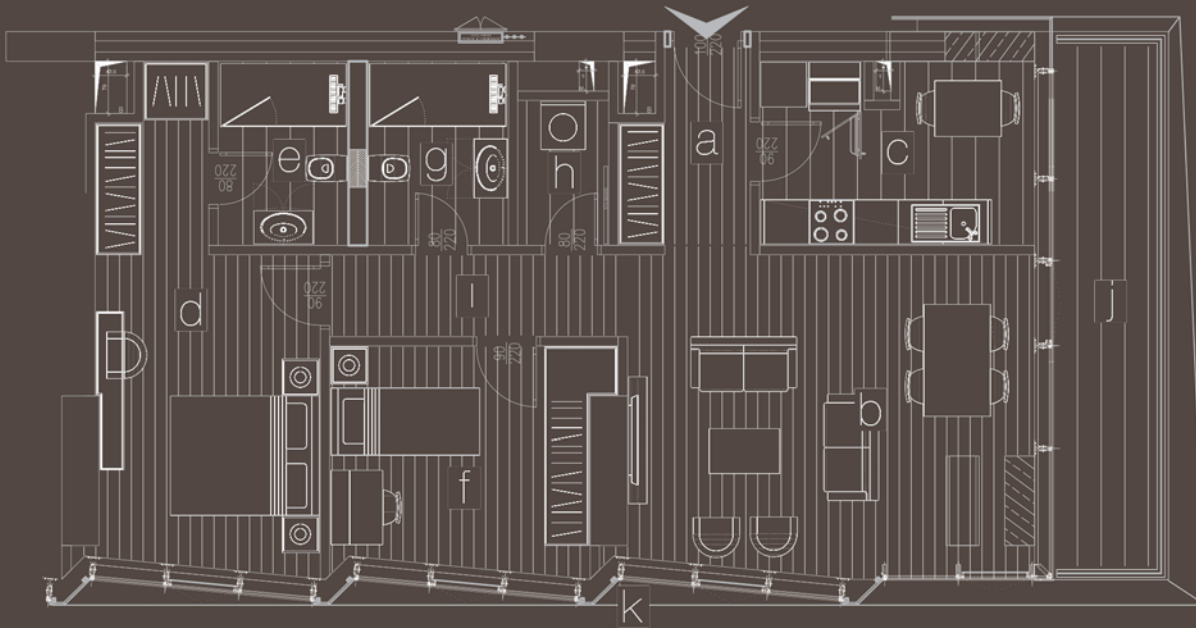


# TYPE 2+1 WITH BALCONY

GROSS 171,5 SQM. + STORAGE ROOM\*

**iNANLAR**

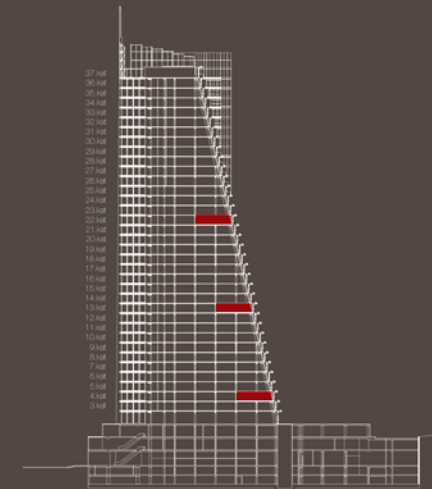
terrace lotus



- a. entrance
- b. living room
- c. kitchen
- d. master bedroom
- e. master bathroom
- f. room-1
- g. bathroom
- h. laundry room
- i. corridor
- j. balcony
- k. special open area beyond balcony
- l. storage room as part of the administration plan\*
- m. parking lot as part of the administration plan\*\*

You can contact our regional office to see the different residence types.

\*The storage units are administration based and show variability in gross size for every independent unit.



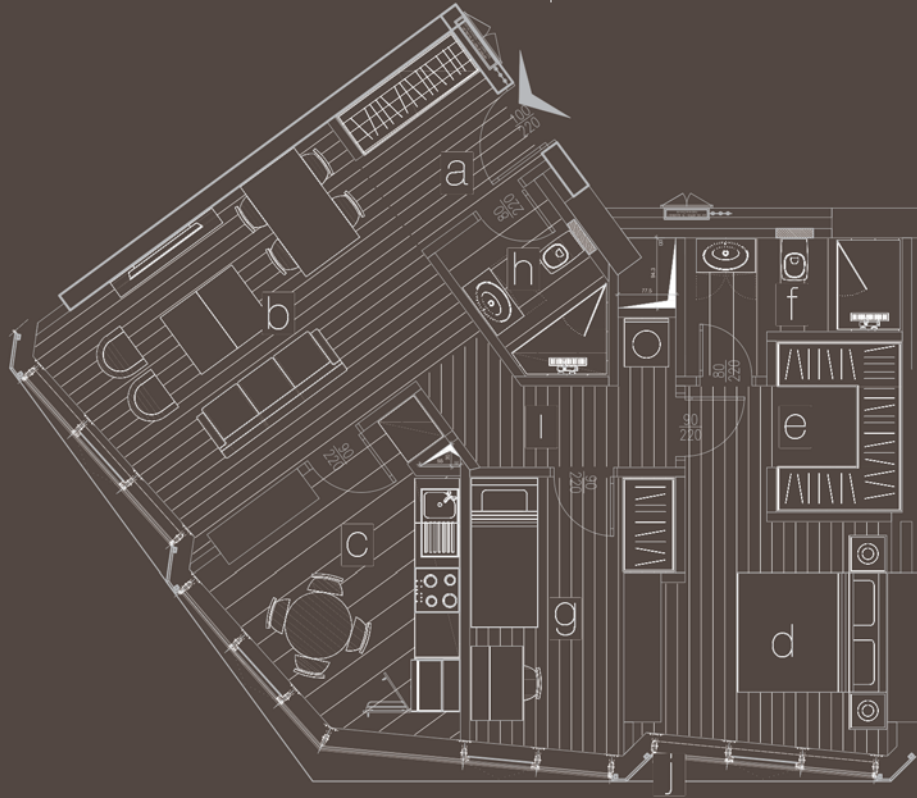
anahar kest

# TYPE 2+1

GROSS 131,9 SQM. + STORAGE ROOM\*

**iNANLAR**

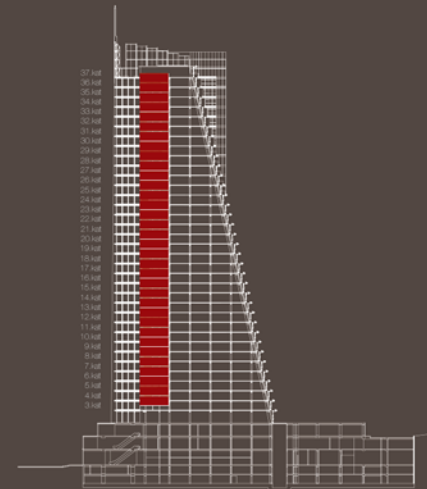
terrace lotus



- a. entrance
- b. living room
- c. kitchen
- d. master bedroom
- e. dressing room
- f. master bathroom
- g. room 1
- h. bathroom
- i. corridor
- j. special open area beyond balcony
- k. storage room as part of the administration plan\*
- l. parking lot as part of the administration plan\*\*

You can contact our regional office to see the different residence types.

\*The storage units are administration based and show variability in gross size for every independent unit.

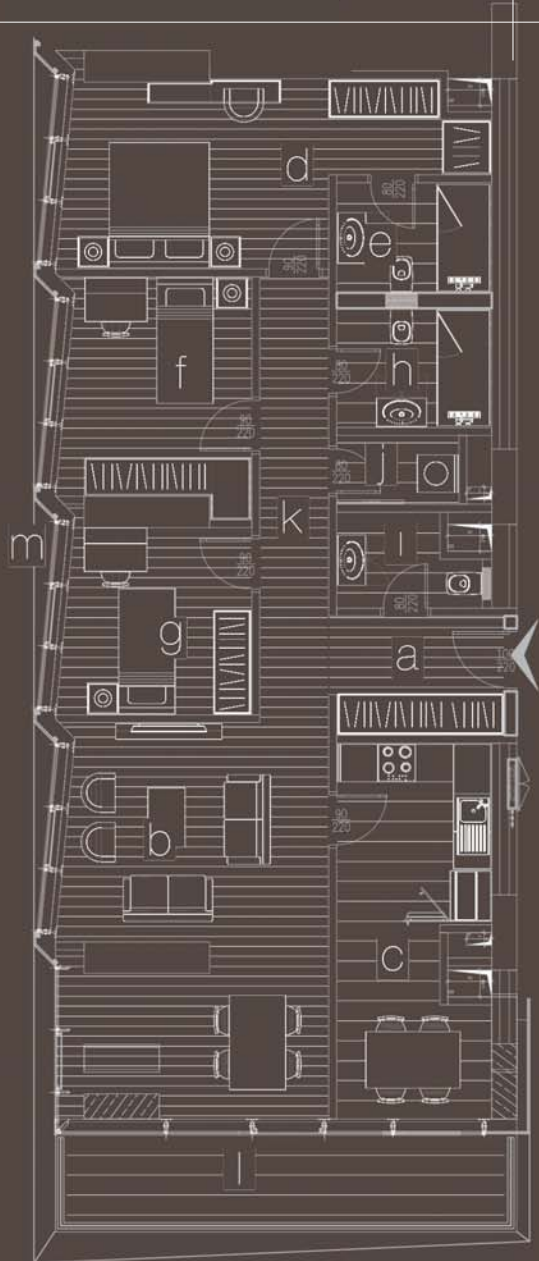


# TYPE 3+1 WITH BALCONY

GROSS 218 SQM. + STORAGE ROOM\*

**iNANLAR**

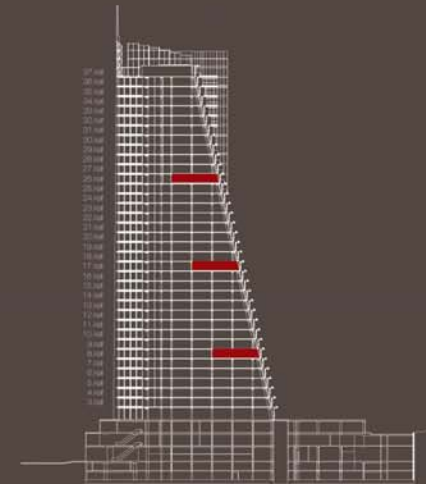
terrace lotus



- a. entrance
- b. living room
- c. kitchen
- d. master bedroom
- e. master bathroom
- f. room 1
- g. room 2
- h. bathroom
- i. WC
- j. laundry room
- k. corridor
- l. balcony
- m. special open area beyond balcony
- n. storage room as part of the administration plan\*
- o. parking lot as part of the administration plan\*\*

You can contact our regional office to see the different residence types.

\*The storage units are administration based and show variability in gross size for every independent unit.



inanlar.kest

# TYPE 4+1

GROSS 219,6 SQM. + STORAGE ROOM\*

**iNANLAR**

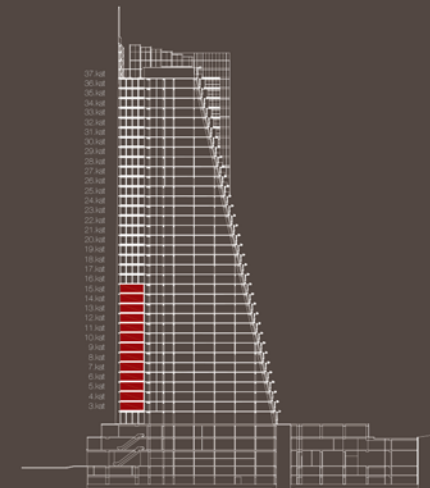
terrace lotus



- |                              |   |
|------------------------------|---|
| a. entrance                  | i. bathroom   |
| b. living room + dining room | j. WC   |
| c. kitchen                   | k. dressing room                                    |
| d. master bedroom            | l. corridor   |
| e. master bathroom           | m. laundry room                                     |
| f. bedroom 1                 | h. special open area beyond balcony                 |
| g. bedroom 2                 | o. storage room as part of the administration plan* |
| h. bedroom 3                 | p. parking lot as part of the administration plan** |

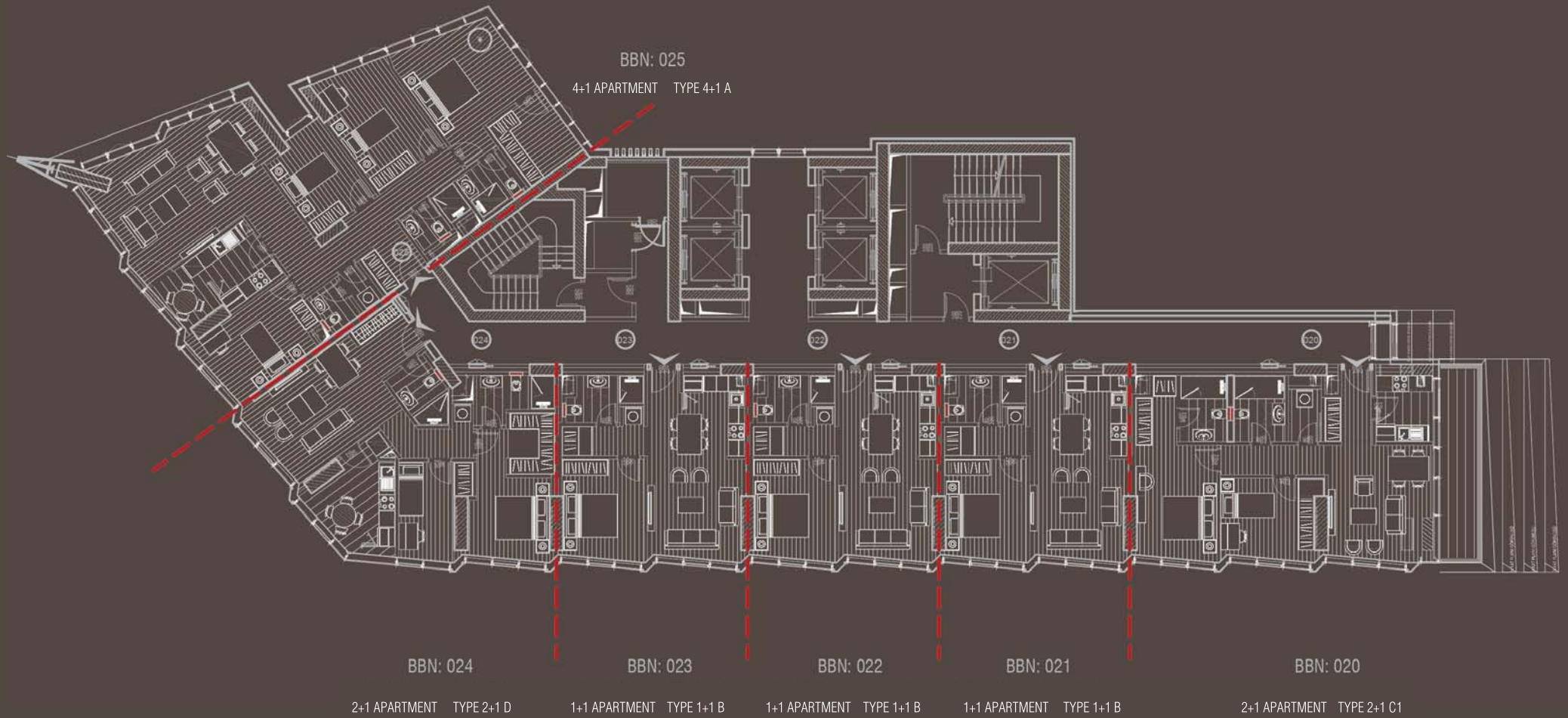
You can contact our regional office to see the different residence types.

\*The storage units are administration based and show variability in gross size for every independent unit.



# 6<sup>TH</sup> FLOOR PLAN

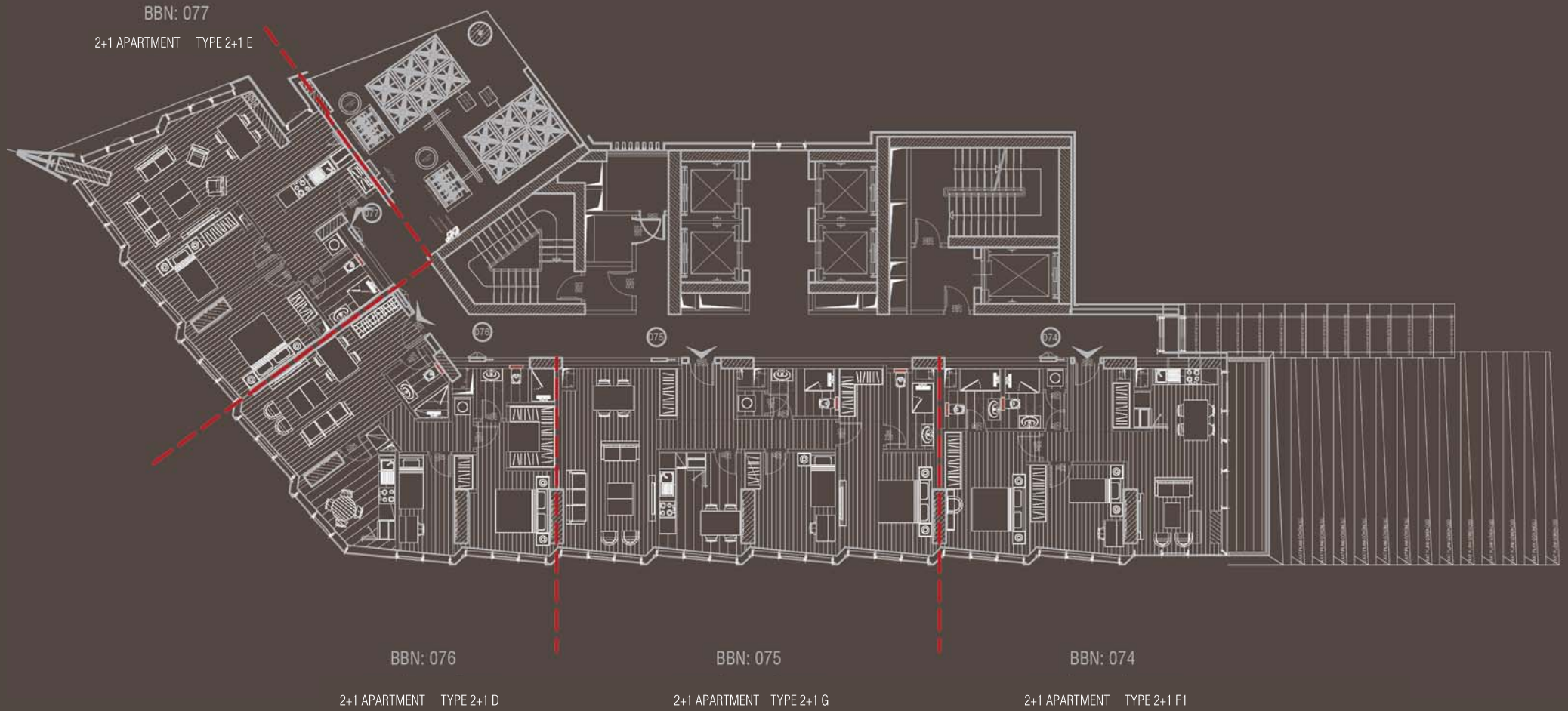
**iNANLAR**  
terrace lotus





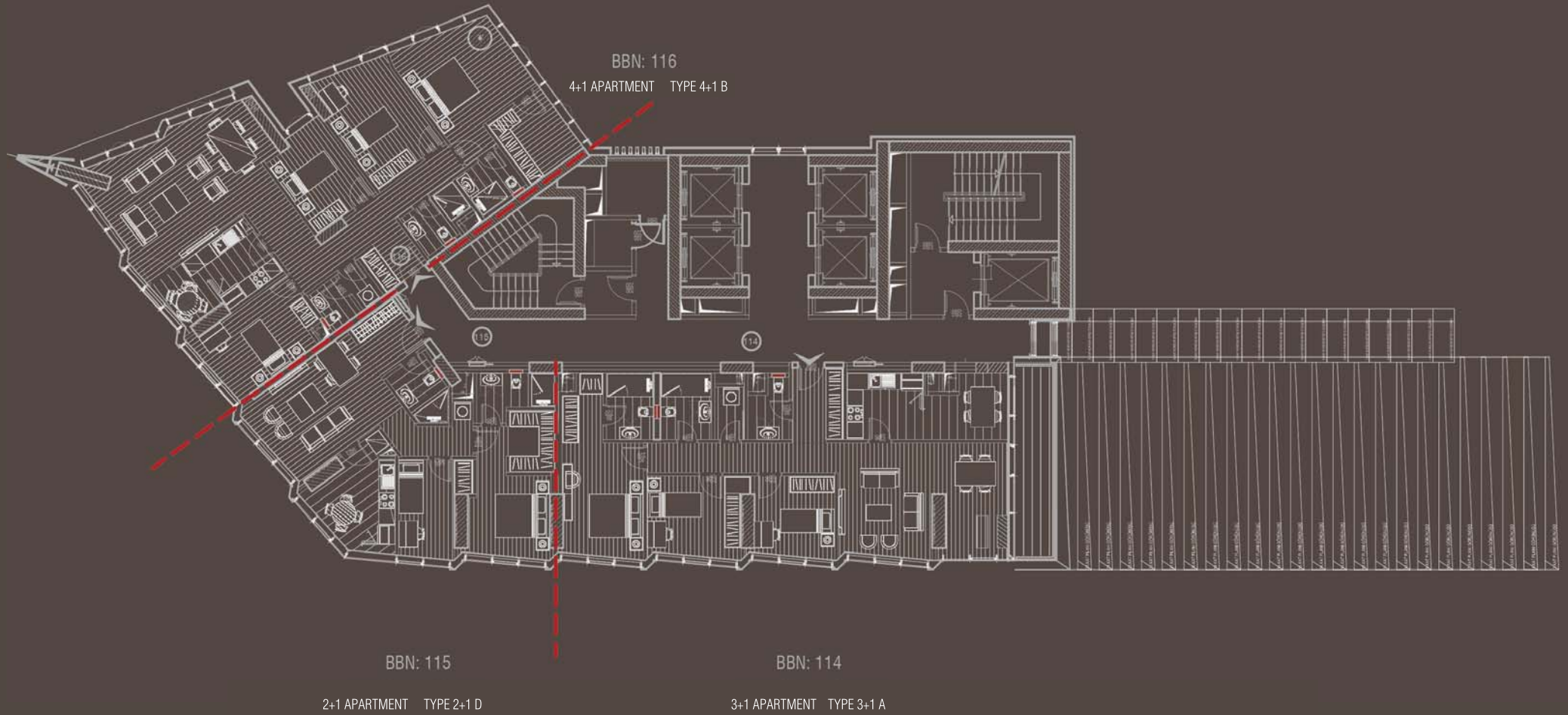
# 16<sup>TH</sup> FLOOR PLAN

**iNANLAR**  
terrace lotus



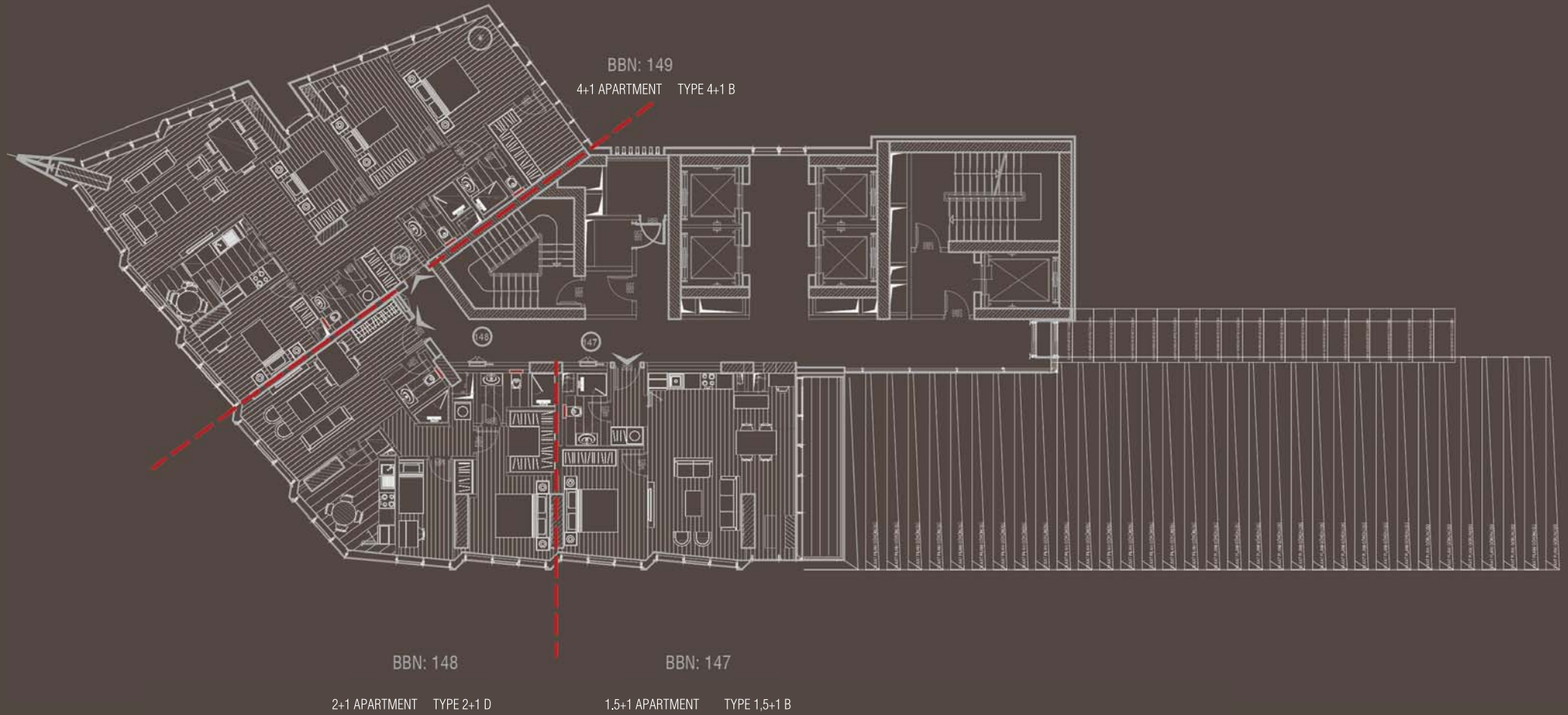
# 26<sup>TH</sup> FLOOR PLAN

**iNANLAR**  
terrace lotus



# 36<sup>TH</sup> FLOOR PLAN

**iNANLAR**  
terrace lotus



**iNANLAR**

terrace lotus



THE BRAND VALUE OF OUR  
PROJECTS IS UNDER OUR  
GUARANTEE

Guarantee of the fine structure for 5 years and  
the rough structure for 10 years

Guarentee of supervising the administrative services  
for the first 2 years



FUNCTIONAL PROFITABLE **TRUSTWORTHY** AESTHETIC

2008 - 2016



terrace iulya



avlu 138



terrace tema



terrace bahçe



terrace lido



terrace leri



asi bahçe



terrace doğa



terrace plus



terrace mix



terrace vadi



terrace hayat



terrace home

**İNANLAR**  
terrace lotus

THERE IS 51-YEAR EXPERIENCE  
IN ITS QUALITY

2016 - ∞



terrace koru



terrace zen



terrace su



ihlamur terrace



aktan terrace



marin terrace



terrace cadde 251



cadde terrace

For detailed and updated information, please visit  
[www.inanlar.com](http://www.inanlar.com)

# İNANLAR

## istanbul

The "terrace" projects are a premium brand in the Istanbul property scene, intelligent investments based on aesthetic design. Our "terrace" projects offer all the virtues of living spaces that are simultaneously focused on the individual and at one with the city.

- |  |   |
|--|---|
| 01 terrace doğa<br>Family living in the woods                  | 15 terrace home<br>Smart lifestyle, smart investment                            |
| 02 terrace ellis<br>The newest trend of natural living         | 16 terrace ferî<br>Right in the city  |
| 03 terrace zen<br>The serenity of nature meets comfort         | 17 avlu 138<br>A courtyard in the heart of the city                             |
| 04 terrace hayat<br>İstanbul's boutique villa lifestyle        | 18 terrace fulya<br>In the center of the city                                   |
| 05 terrace cansit<br>A happy beginning                         | 19 terrace koru<br>Small step, superior investment                              |
| 06 terrace plus<br>Next generation villa living                | 20 terrace cadde 241<br>Terrace style on Bagdat Avenue                          |
| 07 terrace vadi<br>An elegant blend of town and country        | 21 cadde terrace<br>Bagdat Avenue's new address for elegance                    |
| 08 terrace bahçe<br>A boutique concept, an exclusive lifestyle | 22 marin terrace<br>Living spaces beautified by the sea                         |
| 09 terrace istinye<br>The new center of attraction             | 23 ihlâmur terrace<br>Comfort in the center of life                             |
| 10 terrace mix<br>The ideal mix of investment and lifestyle    | 24 asl'î bahçe<br>A garden paradise in the rapidly appreciating Kartal district |
| 11 terrace nill<br>The today address of a rewarding tomorrow   | 25 terrace deniz<br>The view of the sea with glitter of the city                |
| 12 terrace lotus<br>The new icon of E-5                        | 26 aktan terrace<br>Modern metropolitan sophistication                          |
| 13 terrace tema<br>The ultimate in prestige                    | 27 terrace lido<br>Büyükdâ's first and only five-star lifestyle                 |
| 14 terrace su<br>Right investment and living                   | ● completed projects 2008 - 2016  |
|  | ● ongoing projects 2016- 2018   |
|  | ● future projects   |



**iNANLAR** 51 years  
1965