



CHURCHILL  
PLACE



"Basingstoke's No. 1 location for luxury town centre apartments"

Luxury, exclusivity and an unrivalled location is the backbone of Churchill Place. Offering a range of quality apartments, Churchill Place is a one time opportunity to own an exclusive piece of Basingstoke's landmark building.

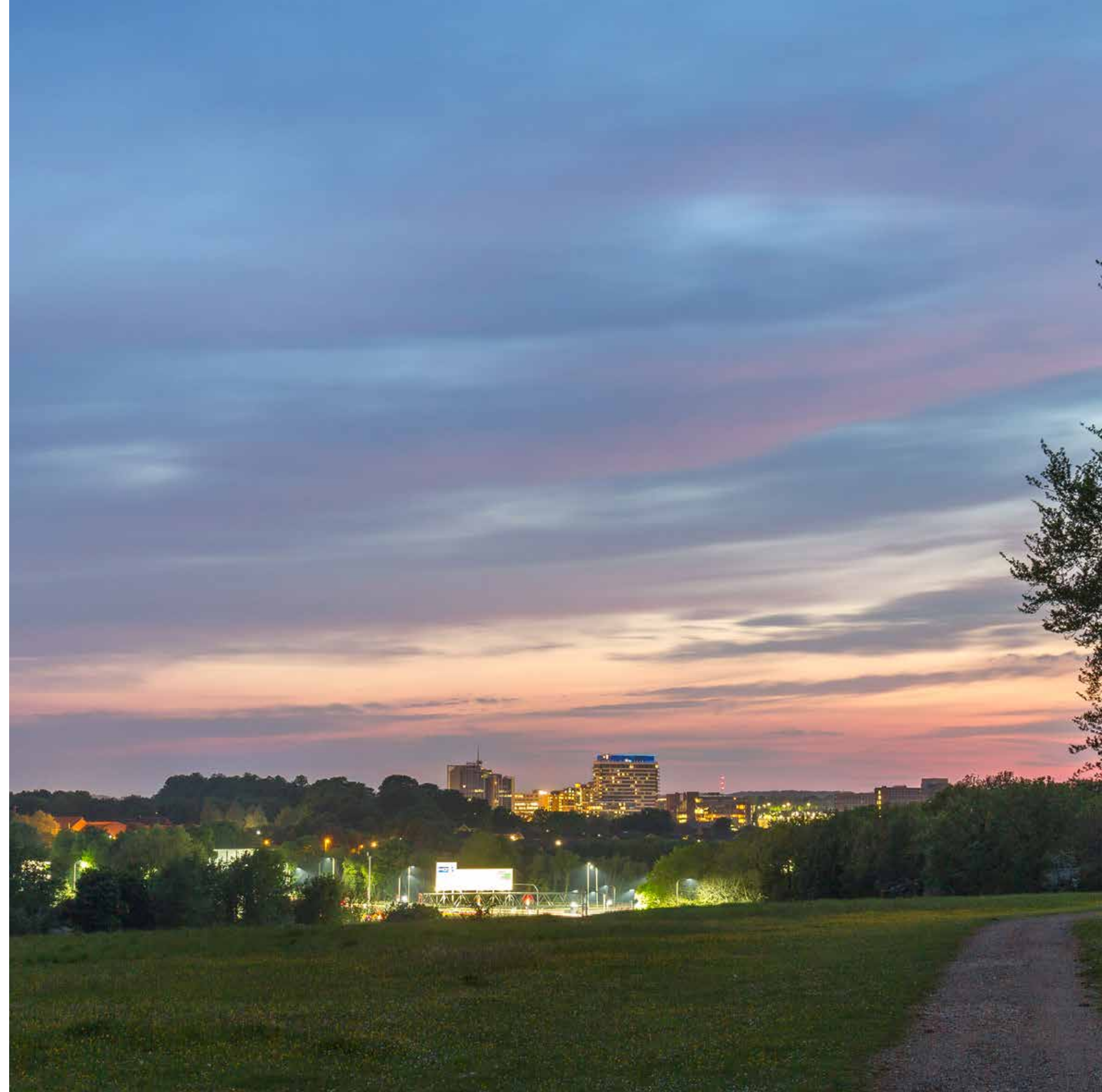
257 apartments

18 studios

216 one bedroom

23 two bedroom

150 car parking spaces



# Welcome to Basingstoke

Basingstoke is more than just a town, it's a destination. Nestled among the rolling hills and fields of the picturesque county of Hampshire, but within easy reach of London, Basingstoke offers the best of both city and rural living.



  
A population of  
**172,000**  
 & growing

**3<sup>rd</sup>** fastest  
growing  
town in  
the UK

  
45  
mins  
to London  
by train

  
A workforce of  
more than  
**41,000**  
highly skilled  
employees

Home to  
**7,300**  
companies



# A thriving local economy

With more than 7,000 companies contributing millions to the local economy, low unemployment and a buoyant retail and leisure sector, Basingstoke is a town primed for future growth and development.

£5.6bn  
gross value  
added (GVA)

★★★★★  
In the top  
5 local economic  
areas for innovation

No.1  
in the UK for digital  
economy, outside  
London

  
7th most affluent  
town in the UK

  
Low unemployment  
rate of 3.7%



# Live in Basingstoke

If you're looking for a fantastic quality of life, look no further than Basingstoke. With hundreds of shops, bars, restaurants and cafés all within a short walk of Churchill Place, as well as theatres, a world-class concert hall, and sports and leisure facilities, the town really does offer something for everyone.

96%  
resident satisfaction

More than 1 million people visit Basingstoke Leisure Park every year to enjoy the park's many attractions, from swimming and skydiving to skiing and ice-skating.

11 secondary schools

A new 107,639 sq ft John Lewis at Home and Waitrose opened in 2015.

Festival Place, Basingstoke's main shopping centre, boasts more than 200 shops, 30 restaurants, bars and cafés, multi-screen cinema, sports centre, library and a nightclub.

2 colleges

Just a few minutes walk from the hustle and bustle of the town centre is Eastrop Park, an oasis of calm, with tree-lined promenades and its own boating lake.

65 primary schools





# A Prime Location

---

Occupying *the* prime location in Basingstoke, Churchill Place is conveniently located close to all the main roads and rail links, making it perfect for commuting. Alongside fantastic transport links, this incredibly positioned development boasts direct and private access to the town's shopping centre, meaning Basingstoke's many retail and leisure attractions are just a stone's throw away.





## Distances from Churchill Place

### On foot

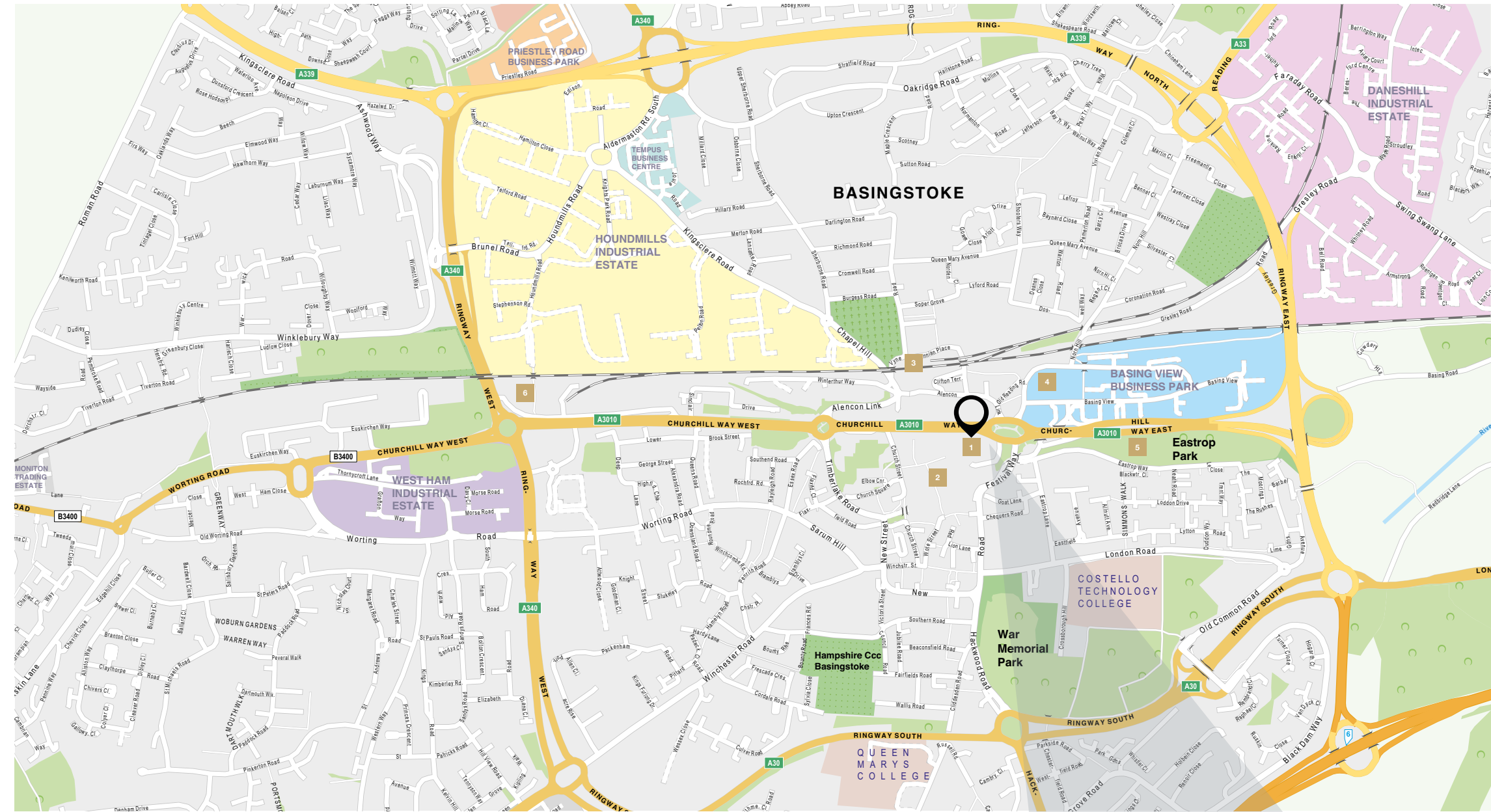
Festival Place Shopping Centre	100m	2mins
Basingstoke Train Station	0.3miles	8mins
Basing View	0.4miles	9mins
Eastrop Park	0.4miles	9mins

### By car

Basingstoke Leisure Park	1.8miles	5mins
M3 motorway J6	1.8miles	5mins
Basingstoke & North Hampshire Hospital	3.1miles	9mins
Reading	17miles	33mins
Southampton	32miles	40mins
London Gatwick Airport	61miles	64mins

### By train

Reading	18mins
Southampton	39mins
Southampton Airport	41mins
London, Waterloo	45mins



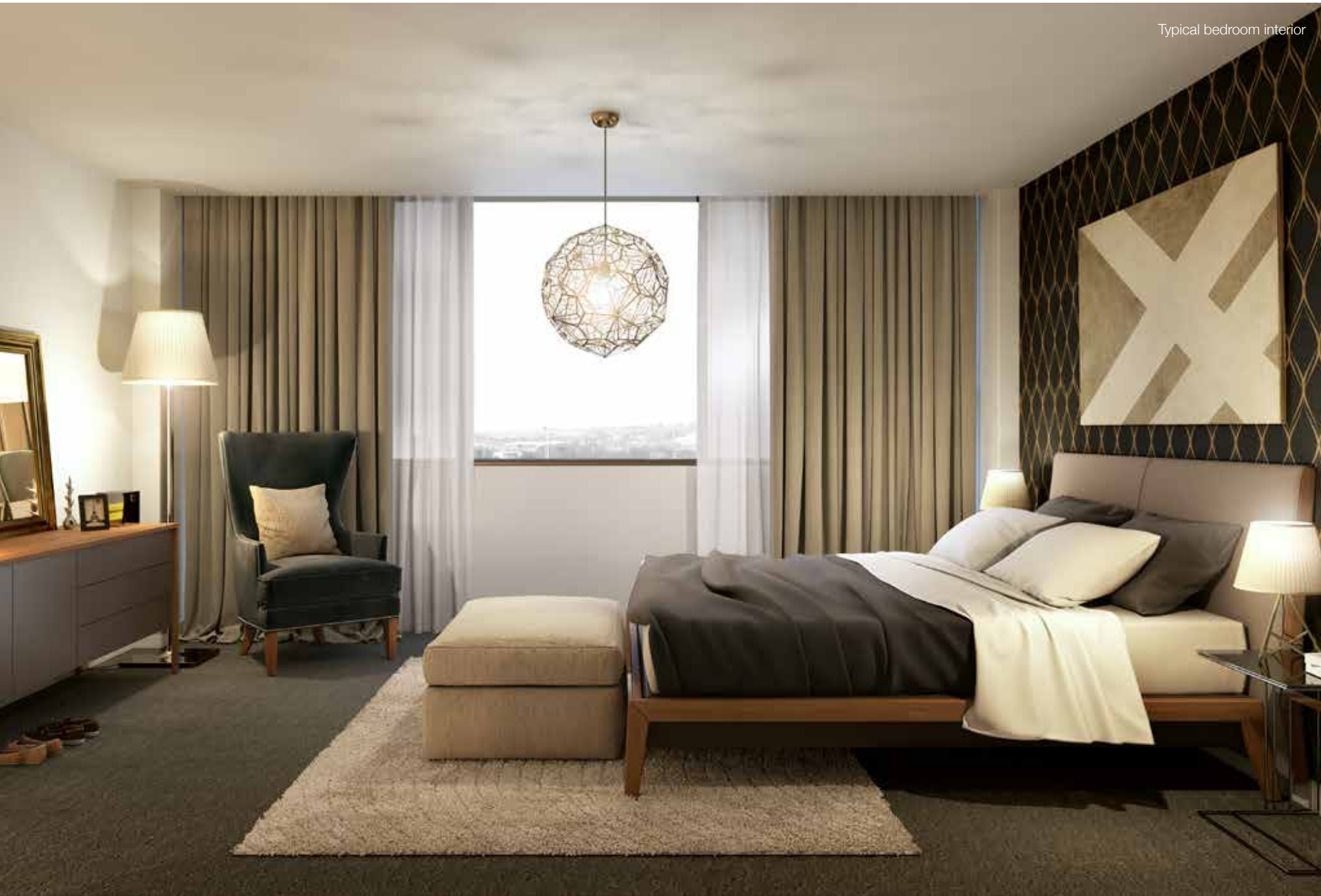
1	2	3	4	5	6
Churchill Place	Festival Place Shopping Centre	Basingstoke Train Station	John Lewis & Waitrose	Eastrop Park	Basingstoke Leisure Park
Basing View Business Park	Houndmills Industrial Estate	West Ham Industrial Estate	Daneshill Industrial Estate	Priestley Road Business Park	Tempus Business Centre





CHURCHILL  
PLACE

Churchill Place is a **luxury** development of  
257 apartments in the heart of Basingstoke town centre.



Typical bedroom interior



Typical kitchen/lounge, interior



Typical studio apartment layout



Typical 1 bed apartment layout



Typical 2 bed apartment layout

# IT'S ALL IN THE DETAIL

- Video intercom entry system to each apartment
- Hardwood veneered, solid core entrance door with spy hole
- Hardwood veneered, or equivalent, internal doors throughout
- Brushed stainless steel and chrome ironmongery throughout



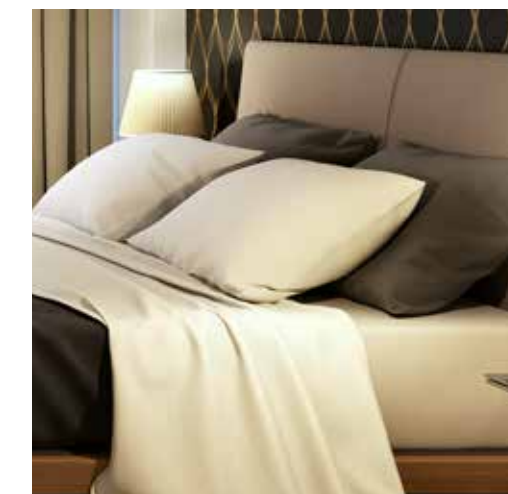
- High gloss fitted kitchen with Corain/Quartz worktop\*
- Built in hob, extractor and combination microwave oven
- Integrated fridge/freezer, washer/dryer and dishwasher
- Low energy LED down-lights



- Full height tiling around bath and shower
- Half height tiling around WC and basin with tiled shelf and built-in mirror
- Ladder style polished chrome, or equivalent, heated towel rail
- Bathroom vanity unit
- Ceramic floor tiling to bathroom



- Fitted carpets to bedrooms
- Glass panelled built-in sliding wardrobes to bedrooms
- Pendant light fittings to bedrooms
- Wood effect flooring to lounge, kitchen and hallway



- Low energy LED down-lights through bathroom and living area
- Brushed stainless steel switches and sockets to living areas
- Full furniture and accessory packs available from studio to two bedroom
- 10 year CML compliant warranty provided by Checkmate

\*Seven Capital will confirm whether the worktop will be Corian or Quartz; both materials are of similar value and quality



# Seven Capital

Seven Capital is a property investment and development company active in both the residential and commercial sector.

Seven Capital's experienced team of real estate professionals has a track record in the delivery of complex real estate schemes and is currently managing more than three million square feet of projects. This includes a £200m commercial property portfolio, as well as 5,000 residential units across 15 schemes, with a development value of circa £1 billion.



Some of our other developments...





**SevenCapital**

[www.sevencapital.com](http://www.sevencapital.com)

DISCLAIMER: In accordance with the Misrepresentation Act 1967, the Consumer Protection from Unfair Trading Regulations 2008 and the Business Protection from Misleading Marketing Regulations 2008, the details contained in this brochure do not form part of any specification or contract. While the information has been prepared in good faith, all and any such responsibility and liability is expressly disclaimed by Seven Capital and its agents. Any buyer must satisfy themselves by inspection or otherwise as to the accuracy of any information given. This brochure has been prepared for the exclusive use and benefit of the person to whom it was given by the Seller and solely for the purpose for which it is provided. Unless we provide express prior written consent, no part of this brochure should be reproduced, distributed or communicated to any third party. We do not accept any liability if this report is used for an alternative purpose from which it is intended, nor to any third party in respect of this report.





CHURCHILL  
PLACE

A development by

**SevenCapital**

[www.sevencapital.com](http://www.sevencapital.com)

For more information on Churchill Place, please call us on

+44 (0) 121 296 1548

[www.sevencapitalinvest.com](http://www.sevencapitalinvest.com)

 @SevenCapital  /SevenCapitalPlc

London  
97 Park Lane  
Mayfair  
London  
W1K 7TG

Birmingham  
112 Colmore Row  
Birmingham  
B3 3AG

Dubai  
Office 407  
Building 4  
Emaar Square  
Downtown Dubai  
Dubai

Tel: +44 (0) 207 659 4400

Tel: +44 (0) 121 233 4433

Tel: 00971 509137602