

*Above : Views from the shore (Pink umbrellas at Sugar Beach / wading in at Woodbine Beach / strolling at Ireland Park)*







*A day in the life at Woodbine Beach*





*Above : Water's Edge Promenade  
Right : Bayside Toronto Community master plan*





LUXURY BY THE LAKE



*Views of Aquabella from your boat*





*Your front row seats to the most beautiful views in the city, courtesy of Aquabella*





LUXURY BY THE LAKE



*It's never boring on the boardwalk*



LUXURY BY THE LAKE



*Look up at Aquabella from the boardwalk or look over the city from your balcony – the views are splendid in all directions*

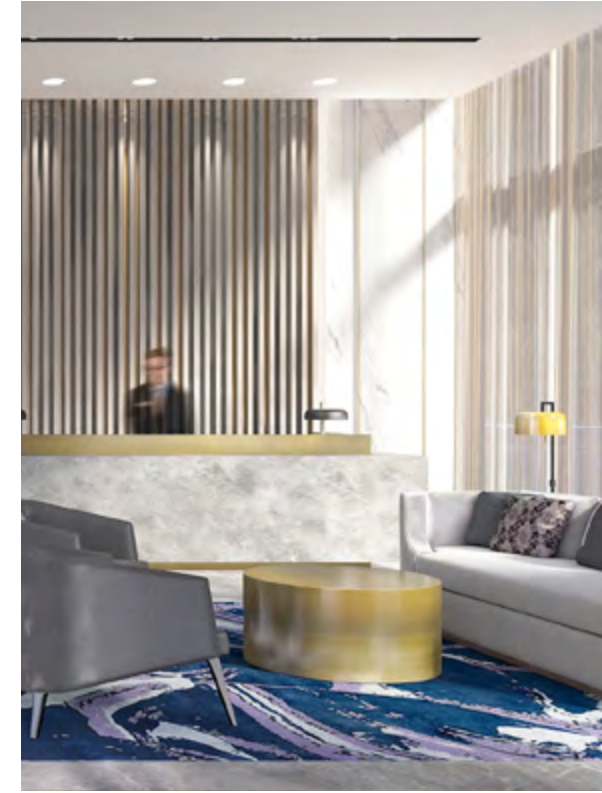


LUXURY BY THE LAKE



*Aquabella's retail spaces add an entirely new level of convenience to the area*  
Retail services and names for illustrative purposes only and are subject to change. Illustrations are artist's concept only.





*Make impressive first impressions with a luxurious lobby and a concierge that cares*





LUXURY BY



THE LAKE



*Host loved ones in a space of pure elegance and heavenly views*





*Channel your inner chef in a kitchen with premium appliances and flawless features*





LUXURY BY THE LAKE



*Wake up to breezy lakeside living*





*Refresh in a bathroom with truly lavish features and finishes*







*Dip your toes, make a splash or simply soak up the sun on Aquabella's brilliant amenity rooftop*



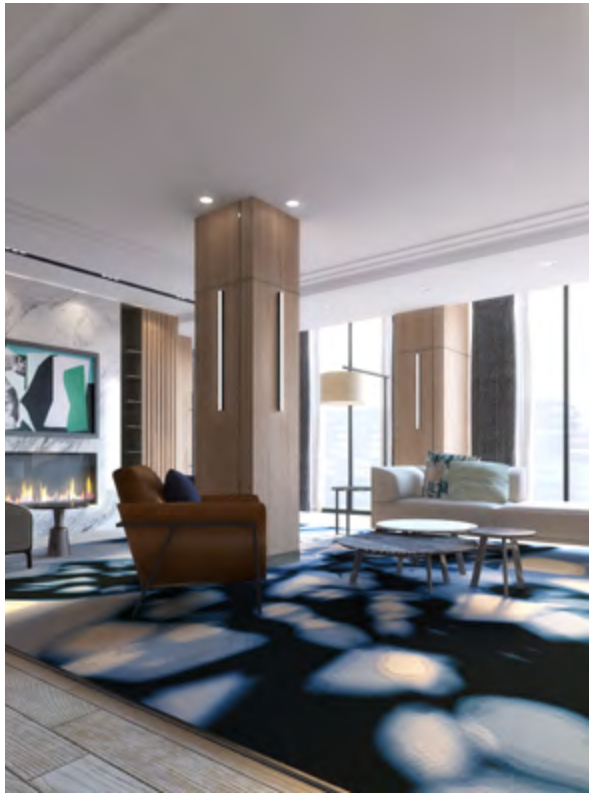


LUXURY BY THE LAKE



Discover design with refreshing flavour at Aquabella





*Host unforgettable gatherings with unbelievable grace and style*







*Get fit fast with a fully equipped gym at Aquabella*





# SITE PLAN



- |   |                   |   |                            |
|---|-------------------|---|----------------------------|
| 1 | AQUABELLA         | 5 | SHERBOURNE COMMON          |
| 2 | AQUAVISTA         | 6 | FUTURE BAYSIDE DEVELOPMENT |
| 3 | AQUALINA          | 7 | QUEENS QUAY PLACE          |
| 4 | AITKEN PLACE PARK |   |                            |



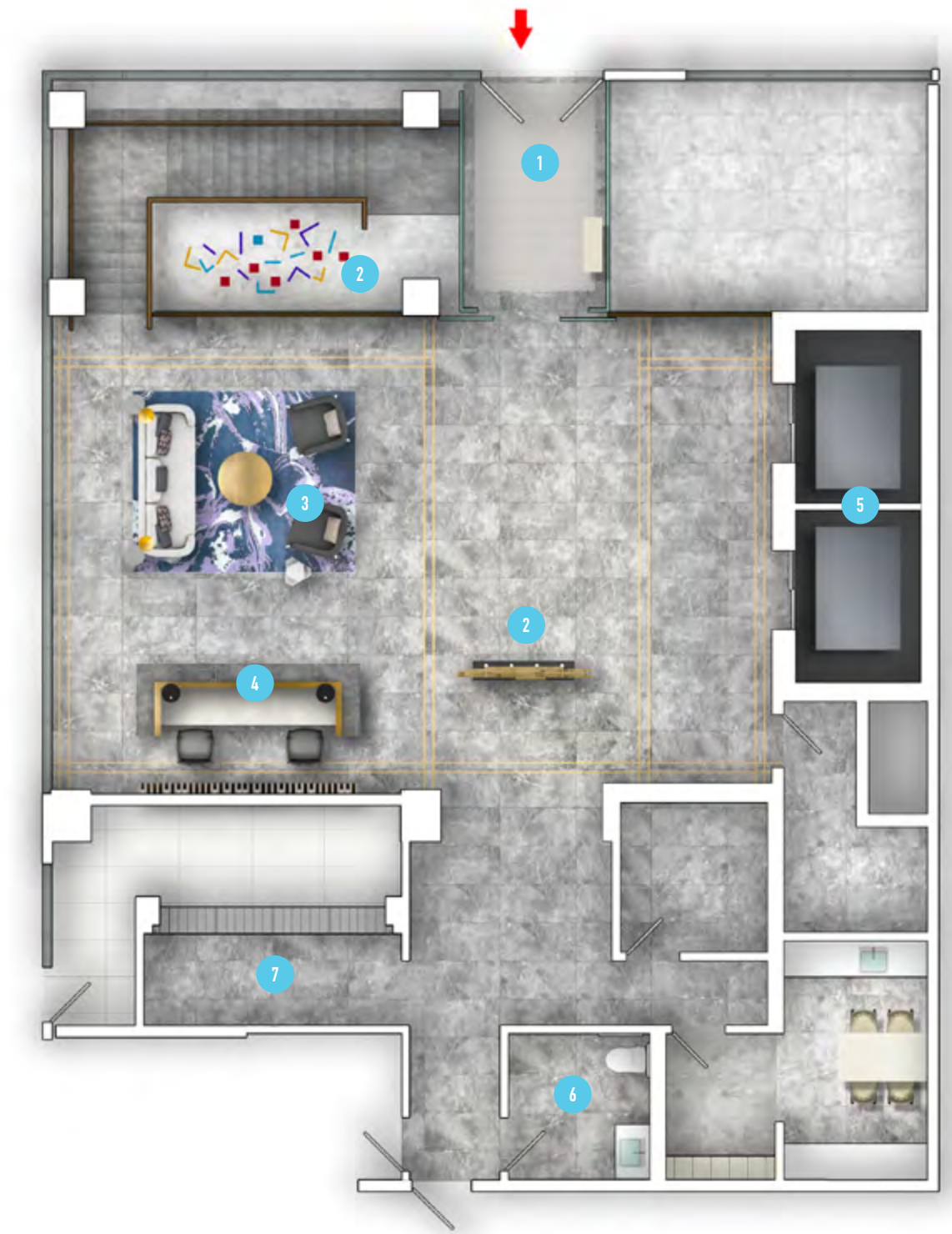
# LOBBY PLANS

WEST LOBBY



- 1 WEST LOBBY ENTRANCE
- 2 LOUNGE
- 3 ELEVATOR BANK

EAST LOBBY



- 1 EAST LOBBY ENTRANCE
- 2 ART INSTALLATION
- 3 LOUNGE
- 4 CONCIERGE
- 5 ELEVATOR BANK
- 6 BATHROOM
- 7 MAIL ROOM



# AMENITY PLANS

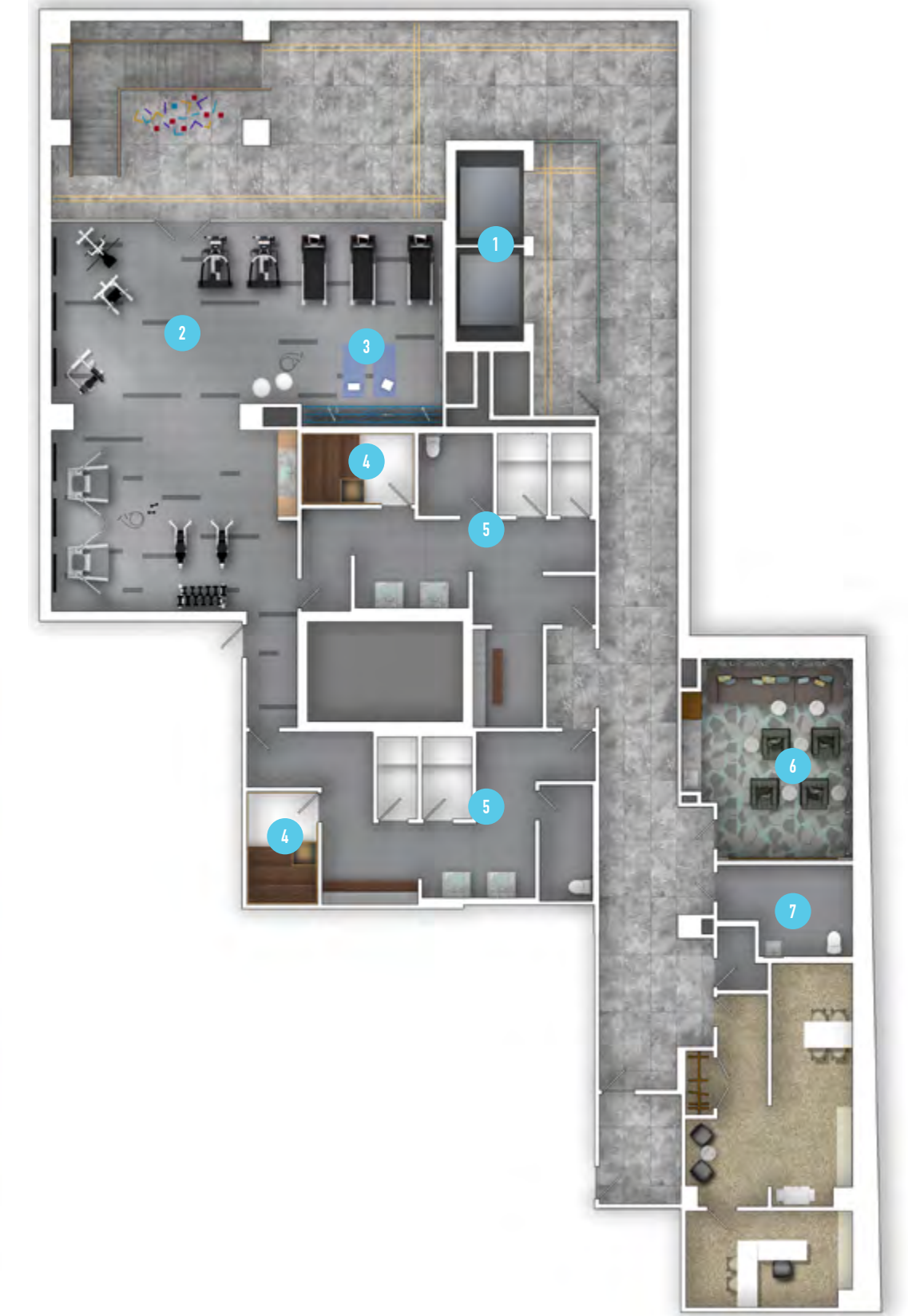
## 7TH FLOOR POOL

- 1 PARTY ROOM
- 2 BATHROOMS
- 3 POOL
- 4 CHAISE LOUNGES
- 5 CABANAS
- 6 SITTING AREA



## GYM

- 1 ELEVATOR BANK
- 2 GYM
- 3 YOGA AREA
- 4 SAUNAS
- 5 CHANGE ROOMS
- 6 THEATRE
- 7 BATHROOM







*Where cityscape and waterscape converge, Aquabella rises above*



