

MARINA PINNACLE

Genius Creates



*Breathtaking dreams now
a reality in Dubai*



Dubai ...

Dubai is filled with promising visions of endless opportunities awakening. Experience life in one of the most advanced cities in the world.

Ancient cultures and traditions join hand to encapsulate a lifestyle of the planning and architecture, is framed with breathtaking sea view that never cease to amaze the eyes of the world. Where visions only a short moment in time now become reality in the marvelous land of Dubai. From its humble beginning it has brought a kaleidoscope of Bedouin tribesman from the vast desert dunes together with the fisherman working the clear blue waters of the gulf, where pearl divers traded their wares with the merchants of the city.

Ideally situated at the trading crossroads of East and West, it has strategic vision to supplement its natural oil wealth by establish itself as a world class hub for industries such as shipping, IT, tourism, Communication and finance.

The exponential pace of development within all these sector, and the service industries that support them, has promoted an almost insatiable demand for property, both commercial and residential. As a result, Dubai is current the venue for some of the world's most ambitious building projects. The Palm, Dubai Waterfront and Burj Dubai, which is set to be the world's tallest building, are just some many more developments which are currently under construction



*Reinventing of new waterfront
living at Dubai Marina*



Dubai Marina ...

Dubai Marina is the name of a megaproject in the city of Dubai and it is designed as a part of the "new Dubai". With 75,000 to 100,000 residents the Dubai Marina should be one of the most modern quarters in the world. The City is being built for 6 billion dollars on the desert sand, with its own internet access. It will have its own infrastructure despite its proximity to Dubai centre and it will have parks and medical facilities as well. Dubai Marina is located th the 5th Interchange on Sheikh Zayed Road between Jebel Ali, Dubai Internet City, Dubai Media City and the American University. In addition to Dubai Marina soon one of the largest apartment and holiday resort will be built in Dubai, the Jumeirah Beach Residence, with 36 luxury residential apartment towers and 4 hotel towers. Dubai Marina will be nearly 4 kilometers long, with yachting ports and numerous restaurants and cafes along the side of the artificial lake. The first phase of this project has been completed.

The marina is entirely man-made and has been developed by the real estate development firm Emaar Properties of the UAE. The Marina will contain over 200 towers and some supertall skyscrapers like the Dubai Marina Towers, The Torch Dubai Marina, Infinity Tower, The Princess Tower, Number One Dubai Marina, Marina Terrace, Le Reve and Horizon Tower, and comprise of an area of 4.9 million m²(50 million ft²), which includes the 40 residential and hotel towers of the Jumeirah Beach Residence. When completed, it will be the world's largest man-made marina.



*Marina Pinnacle Location
Different View's of Site*



Project Location ...

Located at the Promising business community of the Dubai Marina, and with the breathtaking views of the Emirates Golf club and the Palm Jumeirah

marina Pinnacle is a luxuriously designed 71-storey residential building that will surely be a home amidst business,relaxation, and family life.

Marina's neighbours are :
Dubai Internet City,Dubai Media City,the renowned American University, Think Knowledge Village and it is close to EMAAR Business Park and Jebel Ali Free Zone.





Luxury Residential Apartments :

Marina Pinnacle is 77 floors luxury residential tower which consist of 1, 2 and 3 bedroom residence offering breathtaking views of the Gulf, Jumeira Palm and Dubai Maina

Facilities include:4 Indoor Swimming pools, 3 Outdoor swimming pools,Sauna, Jacuzzi, Steam room, Games and Function room
Business Center and More ...

Included with the apartments you will receive an allocated car space,kitchens equipped with Italian appliances,German fixtures,quality vitrified tile flooring,smart home automated system.

Facilities:

- ◆ A huge indoor/outdoor pool
- ◆ A Seperate indoor Swimming pools for men,women and kids in the health club on the 5th floor
- ◆ Sauna,Steam and jacuzzi
- ◆ A billiards hall, table tennis courts and creche facilities
- ◆ An exciting electronic games hall for children
- ◆ An inviting special occasion hall
- ◆ A children's nursery fully equipped with beds,electronic and educational games, Supervised by specialists
- ◆ Children can also be monitored by their parents through the TV inside their room or via the internet from outside
- ◆ Breath Taking views from apartment
- ◆ 24 hours security service
- ◆ Convenient parking
- ◆ luxurious entrance and a huge 5-Star lobby
- ◆ Various retail shops catering your every needs
- ◆ Intercom and various satellite channels free of charge for the residents





Luxury Residential Apartments :

Marina Pinnacle is 77 floors luxury residential tower which consist of 1, 2 and 3 bedroom residence offering breathtaking views of the Gulf, Jumeira Palm and Dubai Maina

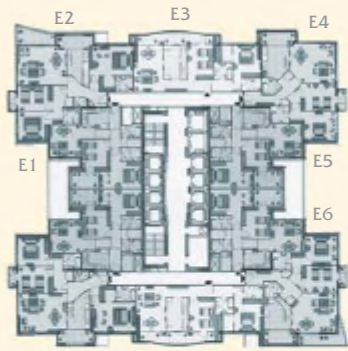
Facilities include: 4 Indoor Swimming pools, 3 Outdoor swimming pools, Sauna, Jacuzzi, Steam room, Games and Function room Business Center and More ...

Included with the apartments you will receive an allocated car space, kitchens equipped with Italian appliances, German fixtures, quality vitrified tile flooring, smart home automated system.

Facilities:

- A huge indoor/outdoor pool
- A Seperate indoor Swimming pools for men, women and kids in the health club on the 5th floor
- Sauna, Steam and jacuzzi
- A billiards hall, table tennis courts and creche facilities
- An exciting electronic games hall for children
- An inviting special occasion hall
- A children's nursery fully equipped with beds, electronic and educational games, Supervised by specialists
- Children can also be monitored by their parents through the TV inside their room or via the internet from outside
- Breath Taking views from apartment
- 24 hours security service
- Convenient parking
- Luxurious entrance and a huge 5-Star lobby
- Various retail shops catering your every needs
- Intercom and various satellite channels free of charge for the residents





Executive Floor Plan

From E01 to E10



Flat - E 01
2 Bedroom Apartment

1 - Living/Dining	4.525x4.35 m
2 - Kitchen	3.675x2.925 m
3 - Lobby	3.1x1.55 m
4 - Bathroom	2.85x1.25 m
5 - Lunch	2.85x1.25 m
6 - Bathroo	2.85x1.9 m
7 - M. Bedroom	5.65x3.45 m
8 - Bedroom	3.85x3.75 m
9 - Balcony	4.0x2.8 m



Flat - E 04
2 Bedroom Apartment

1 - Living/Dining	6.05x5.3 m
2 - Bedroom	4.4x3.5 m
3 - Balcony	2.8x1.25 m
4 - M. Bedroom	4.225x4.1 m
5 - Bathroom	2.425x2.375 m
6 - Kitchen	5.1x1.95 m

Flat - E 02
3 Bedroom Apartment

1 - Bedroom	4.7x4.1 m
2 - Bedroom	4.7x3.5 m
3 - Balcony	2.8x1 m
4 - Living/Dining	6.6x5.3 m
5 - Balcony	5.05x2.8 m
6 - Balcony	5.1x2.1 m
7 - Kitchen	5x2.9 m
8 - M. Bedroom	6.3x4.2 m
9 - M. Bedroom	4.85x3.96 m
10 - Bathroom	2.675x2.25 m
11 - Dress room	2.25x2.10 m
12 - Toilet	2x1.25 m
13 - Bathroom	2.45x2.25 m



Flat - E 05
2 Bedroom Apartment

1 - Store	1.65x1.95 m
2 - Lobby	3.1x1.5 m
3 - Kitchen	3.675x2.925 m
4 - Living/Dining	4.525x4.35 m
5 - Bedroom	3.85x3.75 m
6 - Balcony	4.0x2.8 m
7 - M. Bedroom	5.65x4.05 m
8 - Bathroom	2.85x1.85 m
9 - Lunch	2.85x1.25 m
10 - Bathroom	2.85x1.95 m



Flat - E 06
2 Bedroom Apartment

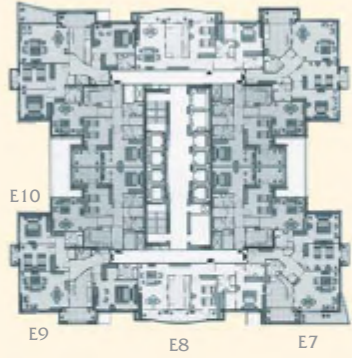
1 - M. Bedroom	5.65x4.05 m
2 - Balcony	4x2.8 m
3 - Bedroom	3.85x3.75 m
4 - Living/Dining	4.525x4.35 m
5 - Kitchen	3.675x2.925 m
6 - Lobby	3.1x1.5 m
7 - Store	1.65x1.95 m
8 - Bathroom	2.85x1.95 m
9 - Lunch	2.85x1.25 m
10 - Bathroom	2.85x1.85 m



Flat - E 03
2 Bedroom Apartment

1 - Balcony	11.8x1.2 m
2 - Bedroom	4.75x3.38 m
3 - Dress room	2.6x2.47 m
4 - Bathroom	1.875x2.75 m
5 - Bathroom	2.47x2.25 m
6 - Lobby	10.1x1.6 m
7 - Kitchen	4.7x2.975 m
8 - Living/Dining	6.3x3.975 m





Executive Floor Plan

From E01 to E10



Flat - E 07

2 Bedroom Apartment

1 - Bathroom	2.425x2.375 m
2 - M. Bedroom	4.225x4.10 m
3 - Balcony	2.8x1.25 m
4 - Bedroom	4.4x3.5 m
5 - Living/Dining	6.05x5.30 m
6 - Balcony	6.25x1.55 m
7 - Balcony	5.1x1.95 m
8 - Kitchen	4.15x3.525 m

Flat - E 09

3 Bedroom Apartment

1 - Bedroom	4.7x4.1 m
2 - Bathroom	2.43x2.175 m
3 - Toilet	2x2.25 m
4 - Dressroom	2.25x2.10 m
5 - Bathroom	2.25x2.675 m
6 - M. Bedroom	6.3x4.2 m
7 - Kitchen	5.1x2.9 m
8 - Balcony	5.1x2.1 m
9 - Living/Dining	6.6x4.2 m
10 - Bedroom	4.7x3.5 m
11 - Balcony	4.7x3.5 m



Flat - E 08

2 Bedroom Apartment

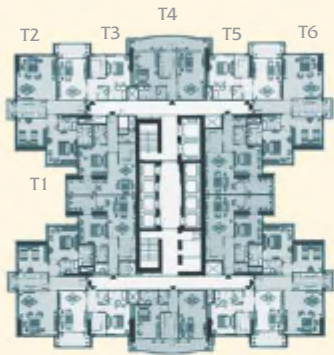
1 - Living/Dining	6.3x3.975 m
2 - Kitchen	4.7x2.975 m
3 - Lobby	10x1.6 m
4 - Bathroom	2.47x2.25 m
5 - Bathroom	1.875x2.75 m
6 - M. Bedroom	4.85x3.96 m
7 - Dressroom	2.6x2.47 m
8 - Bedroom	4.75x3.38 m
9 - Balcony	11.8x1.2m



Flat - E 10

2 Bedroom Apartment

1 - Balcony	4.0x2.8 m
2 - M. Bedroom	5.65x3.715 m
3 - Bathroom	2.85x1.85 m
4 - Lunch	2.85x1.25 m
5 - Bathroom	2.85x1.95 m
6 - Store	1.65x1.95 m
7 - Lobby	3.1x1.5 m
8 - Kitchen	3.675x2.925 m
9 - Living/Dining	4.525x4.35 m
10 - Bedroom	3.85x3.75 m



Typical Floor Plan

From T01 to T14



Flat - T 01
1 Bedroom Apartment

1 - Lobby	5.20x1.50 m
2 - Toilet	2.40x1.15 m
3 - Kitchen	2.90x2.40 m
4 - Living/Dining	5.40x4.20 m
5 - Balcony	4.0x2.8m
6 - M. Bedroom	4.0x4.15 m
7 - Bathroom	2.70x1.875 m



Flat - T 04
1 Bedroom Apartment

1 - M. Bedroom	4.70x3.4.75 m
2 - Kitchen	3.5x2.6 m
3 - Balcony	11.8x1.6 m
4 - Living/Dining	6.90x3.85 m
5 - Lobby	3.15x1.50 m
6 - Toilet	1.95x1.35 m
7 - Bathroom	2.70x1.95 m

Flat - T 02
2 Bedroom Apartment

1 - Living/Dining	6.15x5.575 m
2 - Lobby	5.35x1.875 m
3 - Bathroom	2.75x1.75 m
4 - Bathroom	2.025x3.025 m
5 - M. Bedroom	4.65x4.325 m
6 - Bedroom	4.25x4.25 m
7 - Kitchen	4.25x2.50 m
8 - Balcony	1.25x2.8m



Flat - T 05
1 Bedroom Apartment

1 - M. Bedroom	4.5x3.825 m
2 - Kitchen	3.3x2 m
3 - Balcony	5.1x2 m
4 - Living/Dining	3.975x5.825 m
5 - Lobby	3.15x1.50 m
6 - Toilet	1.95x1.35 m
7 - Bathroom	2.70x1.95 m



Flat - T 06
2 Bedroom Apartment

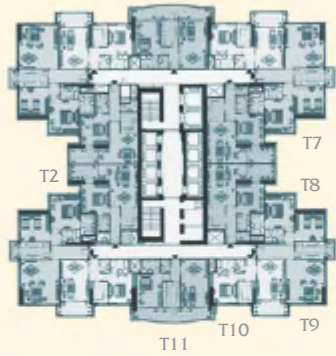
1 - Living/Dining	6.15x5.575 m
2 - Kitchen	4.25x2.50 m
3 - Balcony	1.25x2.8 m
4 - Bedroom	4.25x4.25m
5 - M. Bedroom	4.65x4.325 m
6 - Bathroom	2.025x3.025 m
7 - Bathroom	2.75x1.75 m
8 - Lobby	5.35x1.875 m



Flat - T 03
1 Bedroom Apartment

1 - Balcony	5.1x2 m
2 - Kitchen	3.3x2 m
3 - M. Bedroom	4.5x3.825 m
4 - Bathroom	2.70x1.95 m
5 - Toilet	1.95x1.35 m
6 - Lobby	3.15x1.50 m
7 - Living/Dining	3.975x5.825 m





Typical Floor Plan

From T01 to T14



Flat - T 07
1 Bedroom Apartment

1 - Kitchen	3.4x2.4 m
2 - Lobby	5.20x1.50 m
3 - Toilet	1.95x1.15 m
4 - Bathroom	2.30x1.875 m
5 - M.Bedroom	4.15x4 m
6 - Balcony	4x2.8 m
7 - Living/Dining	5.70x5.40 m

Flat - T 10
1 Bedroom Apartment

1 - Bathroom	2.70x1.95 m
2 - Toilet	1.95x1.35 m
3 - Lobby	3.15x1.50 m
4 - Living/Dining	3.975x5.825 m
5 - Balcony	5.1x2 m
6 - Kitchen	3.3x2 m
7 - M.Bedroom	4.5x3.825 m



Flat - T 08
1 Bedroom Apartment

1 - Kitchen	3.4x2.4 m
2 - Lobby	5.20x1.50 m
3 - Toilet	1.95x1.15 m
4 - Bathroom	2.30x1.875 m
5 - M.Bedroom	4.15x4 m
6 - Balcony	4.0x2.8 m
7 - Living/Dining	5.70x5.40 m



Flat - T 11
1 Bedroom Apartment

1 - Living/Dining	6.90x3.85 m
2 - Lobby	3.15x1.50 m
3 - Toilet	1.95x1.35 m
4 - Bathroom	2.70x1.95 m
5 - M.Bedroom	4.70x3.475 m
6 - Kitchen	3.5x2.6 m
7 - Balcony	11.8x1.6 m



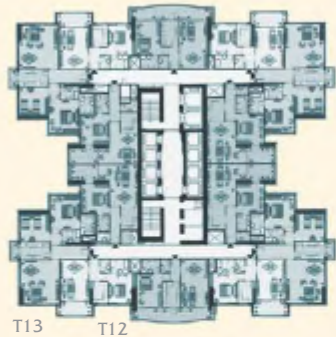
Flat - T 09
2 Bedroom Apartment

1 - M.Bedroom	4.65x4.325 m
2 - Bedroom	4.25x4.25 m
3 - Kitchen	4.25x2.50 m
4 - Balcony	1.25x2.8 m
5 - Living/Dining	6.15x5.575 m
6 - Lobby	5.35x1.875 m
7 - Bathroom	2.75x1.75 m
8 - Bathroom	2.025x3.025 m

Flat - T 12
1 Bedroom Apartment

1 - Living/Dining	3.975x5.825 m
2 - Lobby	3.15x1.50 m
3 - Toilet	1.95x1.35 m
4 - Bathroom	2.70x1.95 m
5 - M.Bedroom	4.5x3.825 m
6 - Kitchen	3.3x2.0 m
7 - Balcony	5.1x2.0 m





T13
T12

Typical Floor Plan

From T01 to T14



Flat - T 13

2 Bedroom Apartment

1 - M.Bedroom	4.65x4.325 m
2 - Bathroom	2.025x3.025 m
3 - Bathroom	2.75x1.75 m
4 - Lobby	5.35x1.875 m
5 - Living/Dining	6.15x5.575 m
6 - Kitchen	4.25x2.50 m
7 - Balcony	1.25x2.8 m
8 - Bedroom	4.25x4.25m

Flat - T 14

1 Bedroom Apartment

1 - Balcony	1.25x2.8 m
2 - Living/Dining	5.70x5.40 m
3 - Kitchen	3.4x2.4 m
4 - Toilet	1.95x1.15 m
5 - Lobby	5.20x1.50 m
6 - Bathroom	2.30x1.875 m
7 - M.Bedroom	4.15x4 m



All the sizes are approximate





Developer



TIGER  **PROPERTIES**



مجموعة توب العقارية
TOP REAL ESTATE
Marketing & Consultancy

Tel.: +965 5757 871/2/3
Fax: +965 5757 874
P.O.Box : 6258 Salmiya 22075 Kuwait
www.toprealestategroup.com



يوتوبيا للعقارات
UTOPIA Properties

Tel.: +973 1721 0004
Fax : +973 1720 0046
P.O.Box 11231 Kingdom Of Bahrain
www.utopiapropertiesgroup.com