

ASHTON

2 bedroom apartment



Broughton Mews, Haven Street, Broughton, Milton Keynes, MK10 7 AQ

- Quality fitted kitchen
- Spacious Living / dining area
- Large master bedroom
- Allocated parking

Developer



BARRATT
HOMES
find the one

Agents



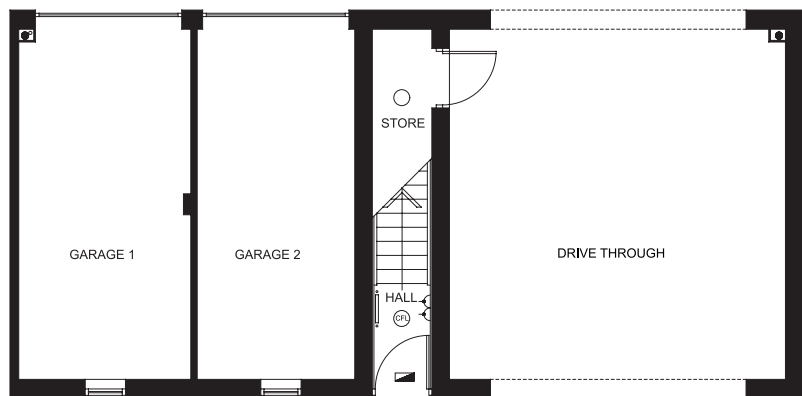
مجموعة توب العقارية
TOP REAL ESTATE
Marketing & Consultancy



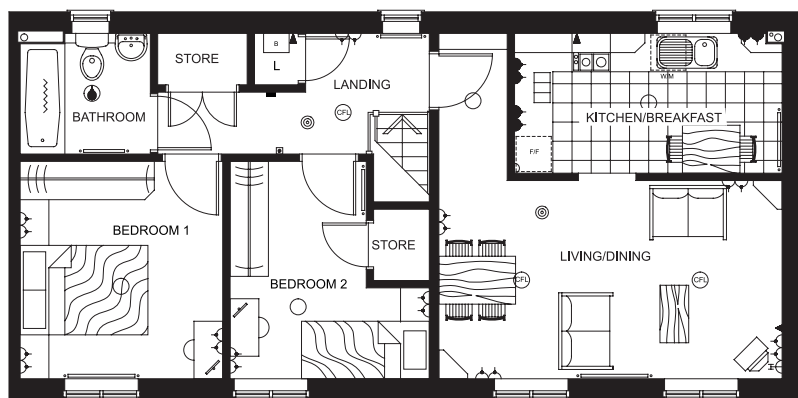
يوتوبيا للعقارات
UTOPIA Properties

ASHTON

2 bedroom apartment



Ground floor



First floor

KEY

○ Light fitting	⊙ Smoke detector	FZ Freezer space
⏏ Electric socket	— Radiator	F Fridge space
⏏ Telephone outlet point	B Boiler	D/W Dishwasher space
⏏ T.V. aerial socket	W/M Washing machine space	

IMPORTANT NOTICE: These particulars are for illustration only. We operate a policy of continuous product development and individual features such as windows, garages and elevational treatments may vary from time to time as may heating and electrical layouts. Consequently these particulars should be treated as general guidance only and cannot be relied upon as accurately describing any of the Specified Matters prescribed by any Order made under the Property Misdescriptions Act 1991. Nor do they constitute a contract, part of a contract or a warranty. Dimensions should not be used for carpet sizes, appliance spaces or items of furniture. Purchasers furniture may be of a different size to that indicated.

First Floor (Approximate dimensions)

Living/Dining	5370 x 3100mm (17'7" x 10'2")
Kitchen	4190 x 2190mm (13'8" x 7'2")
Bedroom 1	3170 x 3400mm (10'4" x 11'2")
Bedroom 2	3120 x 3400mm (10'2" x 11'2")
Bathroom	2040 x 1890mm (6'8" x 6'2")

ULLSWATER

2 bedroom apartment



Broughton Mews, Haven Street, Broughton, Milton Keynes, MK10 7 AQ

- Quality fitted kitchen
- Spacious Living / dining area
- Large master bedroom
- Allocated parking

Developer



BARRATT
HOMES
find the one

Agents



مجموعة توب العقارية
TOP REAL ESTATE
Marketing & Consultancy



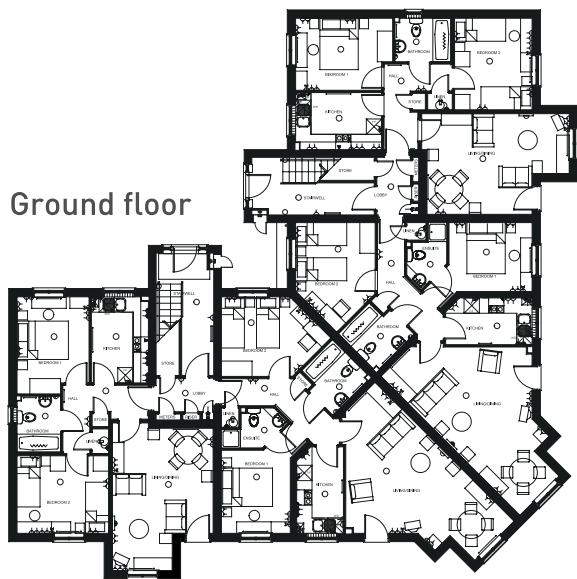
يوتوبيا للعقارات
UTOPIA Properties

ULLSWATER

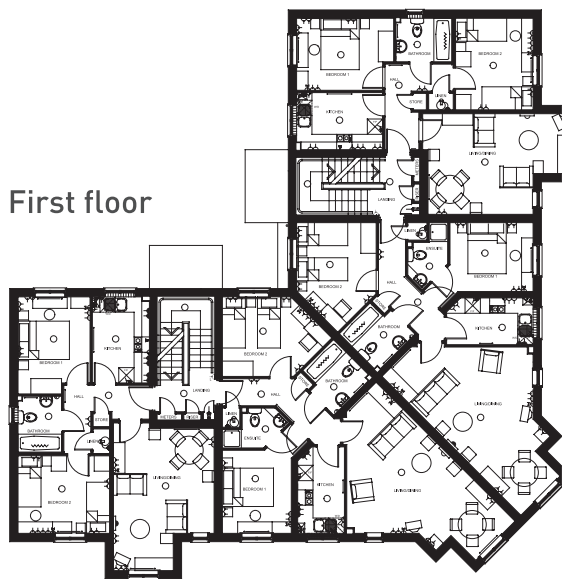
2 bedroom apartment



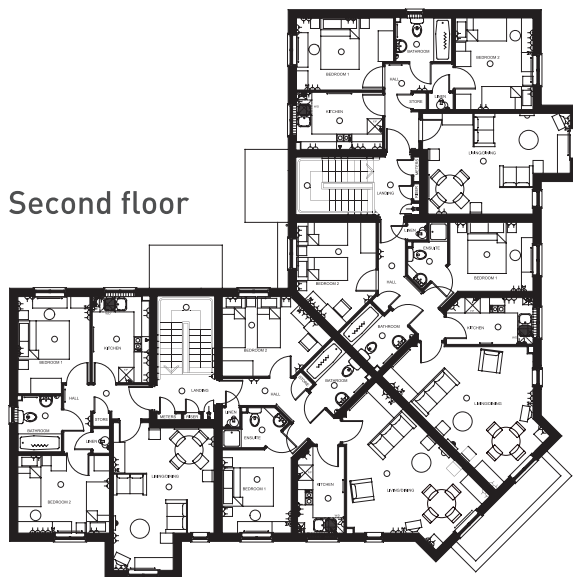
Ground floor



First floor



Second floor



KEY

	Light fitting		Smoke detector		W/M Washing machine space
	Electric socket		Shaver socket		FZ Freezer space
	Telephone outlet point		Radiator		F Fridge space
	T.V. aerial socket		Airing cupboard		D/W Dishwasher space
	Extract fan		Boiler		

IMPORTANT NOTICE: These particulars are for illustration only. We operate a policy of continuous product development and individual features such as windows, garages and elevational treatments may vary from time to time as may heating and electrical layouts. Consequently these particulars should be treated as general guidance only and cannot be relied upon as accurately describing any of the Specified Matters prescribed by any Order made under the Property Misdescriptions Act 1991. Nor do they constitute a contract, part of a contract or a warranty. Dimensions should not be used for carpet sizes, appliance spaces or items of furniture. Purchasers furniture may be of a different size to that indicated.

Ground/First Floor (Approximate dimensions)

Lounge	7691 max x 4550mm max (25'2" max x 14'9" max)
Kitchen	3380 max x 1827mm max (11'1" max x 5'9" max)
Bedroom 1	3248 x 2695mm (10'6" x 8'8")
Bedroom 2	3110 x 4230mm max (10'2" x 13'8" max)

Second Floor (Approximate dimensions)

Lounge	5750 max x 3936mm max (18'8" max x 12'9" max)
Kitchen	3365 x 2205mm (11'0" x 7'2")
Bedroom 1	3795 max x 2815mm max (12'4" x 9'2")
Bedroom 2	3030 x 3585mm (9'9" x 11'7")

ENDALE

3 bedroom home



Broughton Mews, Haven Street, Broughton, Milton Keynes, MK10 7 AQ

- Quality fitted kitchen
- Spacious lounge with French doors
- Two double bedrooms
- Ensuite to master bedroom

Developer



BARRATT
HOMES
find the one

Agents



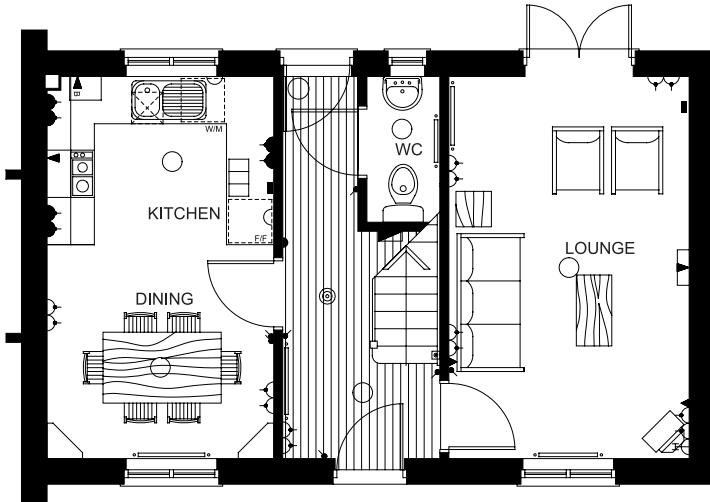
مجموعة توب العقارية
TOP REAL ESTATE
Marketing & Consultancy



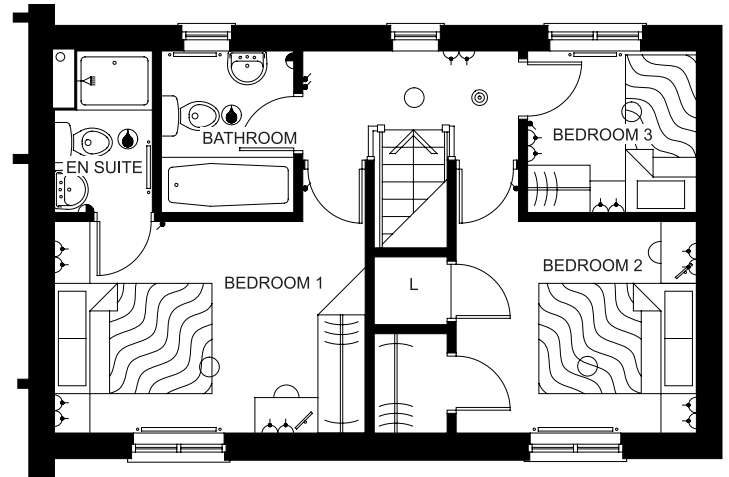
يوتوبيا للعقارات
UTOPIA Properties

ENDALE

3 bedroom home



Ground floor



First floor

KEY

- | | | | |
|--|---|--|--------------------------|
| | Lamp fitting | | T.V. aerial socket |
| | Splashproof IPX4 lamp fitting | | Internal telephone point |
| | Light switch | | Room thermostat |
| | Switched socket outlet | | Smoke detector |
| | Double switched socket outlet | | Consumer unit |
| | Switched socket above worktop / cabinet | | CO Detector |
| | Double switched socket above worktop | | Boiler |
| | Shaver point | | Radiator |

IMPORTANT NOTICE: These particulars are for illustration only. We operate a policy of continuous product development and individual features such as windows, garages and elevational treatments may vary from time to time as may heating and electrical layouts. Consequently these particulars should be treated as general guidance only and cannot be relied upon as accurately describing any of the Specified Matters prescribed by any Order made under the Property Misdescriptions Act 1991. Nor do they constitute a contract, part of a contract or a warranty. Dimensions should not be used for carpet sizes, appliance spaces or items of furniture. Purchasers furniture may be of a different size to that indicated.

Ground Floor (Approximate dimensions)

Lounge	3050 x 4850mm 10'0" x 15'10"
Kitchen	2880 x 2140mm 9'5" x 7'0"
Dining area	2880 x 2720mm 9'5" x 8'1"
Cloak room	930 x 1850mm 3'0" x 6'1"

First Floor (Approximate dimensions)

Bedroom 1	3950 x 2680mm 12'11" x 8'9"
Ensuite	1290 x 2050mm 4'3" x 6'8"
Bedroom 2	3050 x 2680mm 10'0" x 8'9"
Bedroom 3	2140 x 2050mm 7'0" x 6'8"
Bathroom	680 x 2050mm 5'6" x 6'8"

ENBOURNE

3 bedroom home



Broughton Mews, Haven Street, Broughton, Milton Keynes, MK10 7 AQ

- Modern fitted kitchen
- Dining area with access to garden
- Spacious family lounge
- Ensuite to master bedroom

Developer



BARRATT
HOMES
find the one

Agents



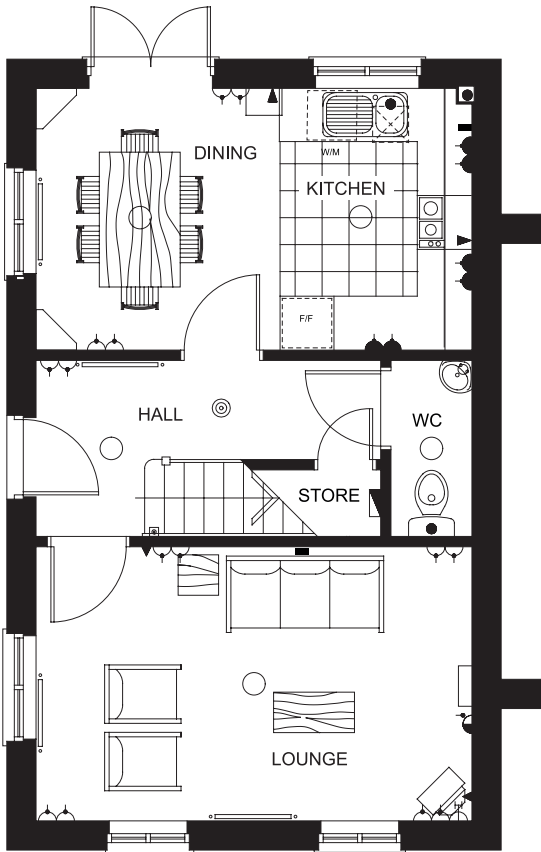
مجموعة توب العقارية
TOP REAL ESTATE
Marketing & Consultancy



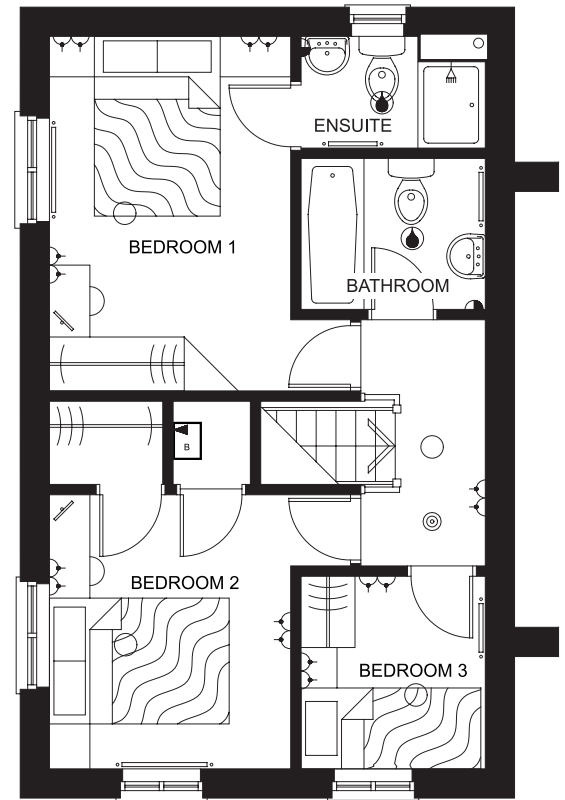
يوتوبيا للعقارات
UTOPIA Properties

ENBOURNE

3 bedroom home



Ground floor



First floor

KEY

- Light fitting
- ⏏ Electric socket
- ◀ Telephone outlet point
- ⦿ T.V. aerial socket
- ⊙ Smoke detector
- ▬ Radiator
- B Boiler
- WM Washing machine space
- FZ Freezer space
- F Fridge space
- D/W Dishwasher space

IMPORTANT NOTICE: These particulars are for illustration only. We operate a policy of continuous product development and individual features such as windows, garages and elevational treatments may vary from time to time as may heating and electrical layouts. Consequently these particulars should be treated as general guidance only and cannot be relied upon as accurately describing any of the Specified Matters prescribed by any Order made under the Property Misdescriptions Act 1991. Nor do they constitute a contract, part of a contract or a warranty. Dimensions should not be used for carpet sizes, appliance spaces or items of furniture. Purchasers furniture may be of a different size to that indicated.

Ground Floor (Approximate dimensions)

Lounge	4850 x 3050mm (15'10" x 10'0")
Dining Area	2720 x 2910mm (8'11" x 9'6")
Kitchen	2140 x 2910mm (7'0" x 9'6")

First Floor (Approximate dimensions)

Bedroom 1	3350 x 3940mm (10'11" x 12'11")
En-suite	2050 x 1240mm (6'8" x 4'1")
Bedroom 2	3350 x 3050mm (10'11" x 10'0")
Bedroom 3	2050 x 2140mm (6'8" x 7'0")
Bathroom	2050 x 1680mm (6'8" x 5'6")

BARFORD

3 bedroom home



Broughton Mews, Haven Street, Broughton, Milton Keynes, MK10 7 AQ

- Spacious lounge with French doors
- Modern fitted kitchen
- Separate Dining room
- Spacious family lounge
- Master bedroom with ensuite and dressing area

Developer



BARRATT
HOMES
find the one

Agents



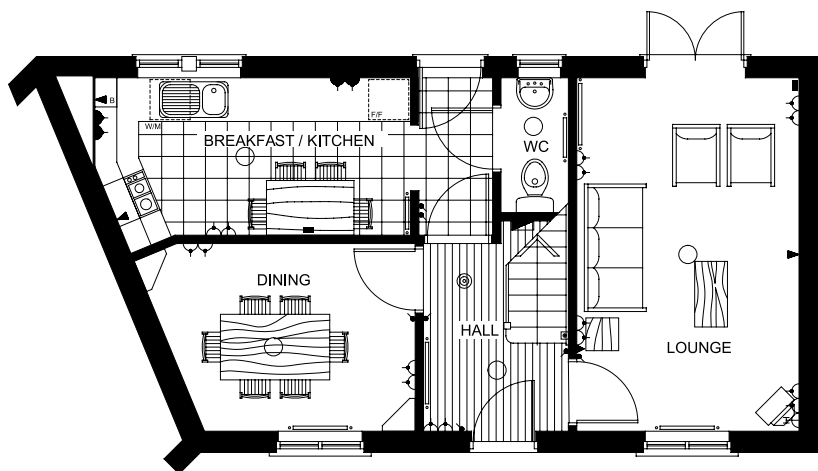
مجموعة توب العقارية
TOP REAL ESTATE
Marketing & Consultancy



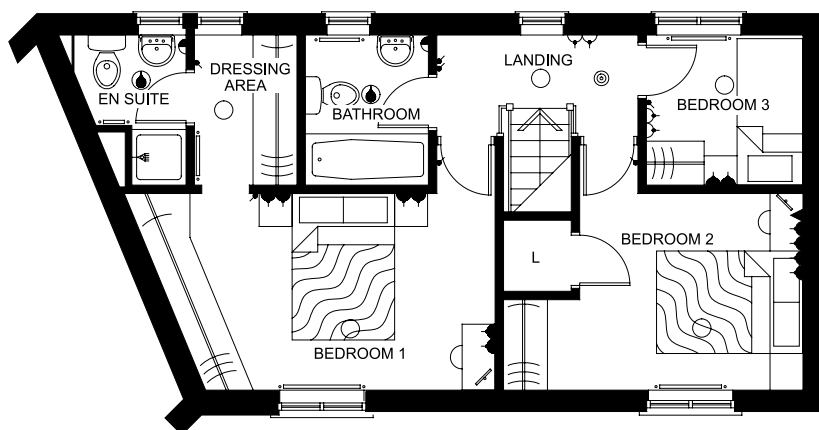
يوتوبيا للعقارات
UTOPIA Properties

BARFORD

3 bedroom home



Ground floor



First floor

KEY

- | | | | |
|--|---|--|--------------------------|
| | Lamp fitting | | T.V. aerial socket |
| | Splashproof IPX4 lamp fitting | | Internal telephone point |
| | Light switch | | Room thermostat |
| | Switched socket outlet | | Smoke detector |
| | Double switched socket outlet | | Consumer unit |
| | Switched socket above worktop / cabinet | | CO Detector |
| | Double switched socket above worktop | | Boiler |
| | Shaver point | | Radiator |

IMPORTANT NOTICE: These particulars are for illustration only. We operate a policy of continuous product development and individual features such as windows, garages and elevational treatments may vary from time to time as may heating and electrical layouts. Consequently these particulars should be treated as general guidance only and cannot be relied upon as accurately describing any of the Specified Matters prescribed by any Order made under the Property Misdescriptions Act 1991. Nor do they constitute a contract, part of a contract or a warranty. Dimensions should not be used for carpet sizes, appliance spaces or items of furniture. Purchasers furniture may be of a different size to that indicated.

Ground Floor (Approximate dimensions)

Lounge	4850 x 3060mm (15'9" x 10'0")
Kitchen	2170 x 4341mm (7'11" x 14'2")
Dining room	2585 x 2892mm (8'5" x 9'4")

First Floor (Approximate dimensions)

Bedroom 1	2695 x 5088mm max (8'8" x 16'7" max)
Dressing room	2060 x 1414mm (6'7" x 4'6")
Bedroom 2	2695 x 4100mm max (8'8" x 13'4" max)
Bedroom 3	2060 x 2149mm (6'8" x 7'0")

3 bedroom home

ASHBOURNE

3 bedroom home



Broughton Mews, Haven Street, Broughton, Milton Keynes, MK10 7 AQ

- Quality fitted kitchen
- Dining area with French doors to garden
- Two double bedrooms
- Ensuite to master bedroom

Developer



BARRATT
HOMES
find the one

Agents



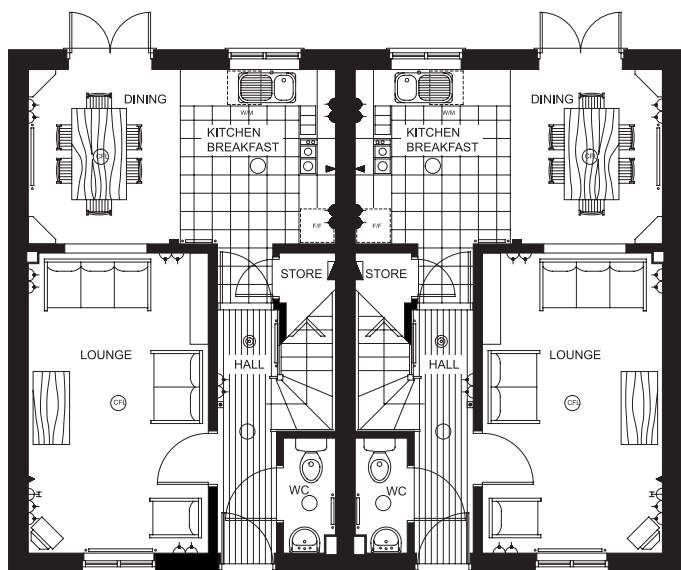
مجموعة توب العقارية
TOP REAL ESTATE
Marketing & Consultancy



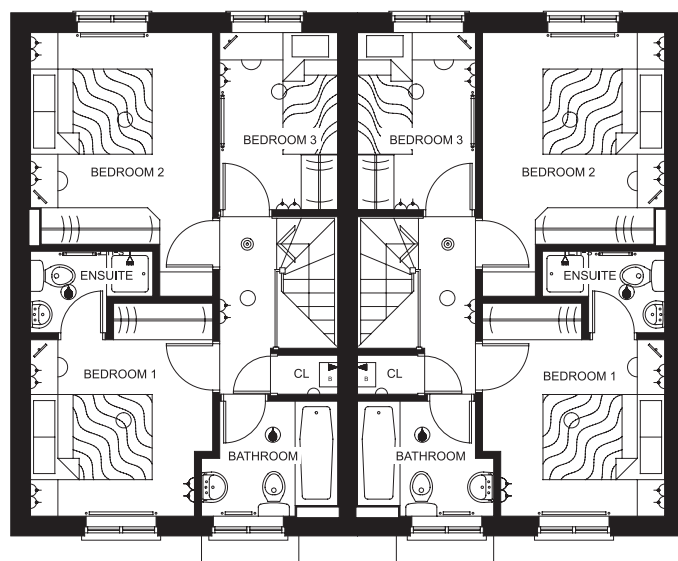
يوتوبيا للعقارات
UTOPIA Properties

ASHBOURNE

3 bedroom home



Ground floor



First floor

KEY

- Light fitting
- ⏏ Electric socket
- ◀ Telephone outlet point
- ⏏ T.V. aerial socket
- ⊙ Smoke detector
- Radiator
- B Boiler
- W/M Washing machine space
- FZ Freezer space
- F Fridge space
- D/W Dishwasher space

IMPORTANT NOTICE: These particulars are for illustration only. We operate a policy of continuous product development and individual features such as windows, garages and elevational treatments may vary from time to time as may heating and electrical layouts. Consequently these particulars should be treated as general guidance only and cannot be relied upon as accurately describing any of the Specified Matters prescribed by any Order made under the Property Misdescriptions Act 1991. Nor do they constitute a contract, part of a contract or a warranty. Dimensions should not be used for carpet sizes, appliance spaces or items of furniture. Purchasers furniture may be of a different size to that indicated.

Ground Floor (Approximate dimensions)

Kitchen/Dining	5050 x 2870mm (16'6" x 9'5")
Lounge	2960 x 4930mm (9'8" x 16'2")
WC	860 x 1890mm (2'10" x 6'2")

First Floor (Approximate dimensions)

Bedroom 1	3000 x 3500mm (9'10" x 11'5")
En-suite	2010 x 1340mm (6'7" x 4'5")
Bedroom 2	3000 x 4340mm (9'10" x 14'2")
Bedroom 3	1940 x 2910mm (6'4" x 9'6")
Bathroom	2240 x 1890mm (7'4" x 6'2")

WOODCOTE

3 / 4 bedroom home



Broughton Mews, Haven Street, Broughton, Milton Keynes, MK10 7 AQ

- Modern kitchen
- Spacious living / dining room
- Three double bedrooms
- Master bedroom with dressing area and ensuite

Developer



BARRATT
HOMES
find the one

Agents



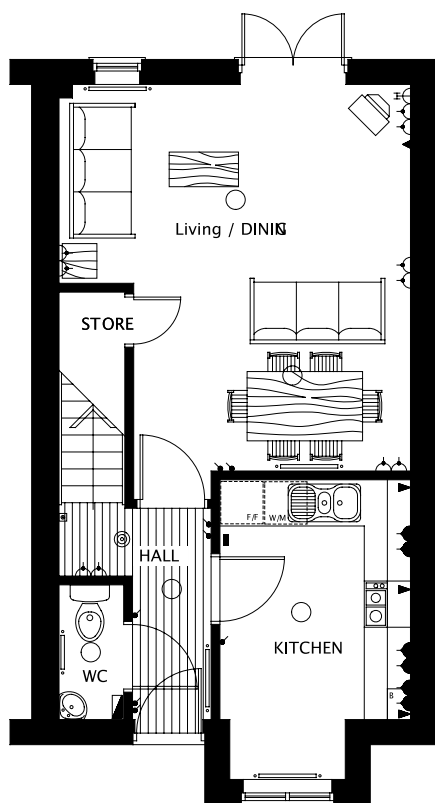
مجموعة توب العقارية
TOP REAL ESTATE
Marketing & Consultancy



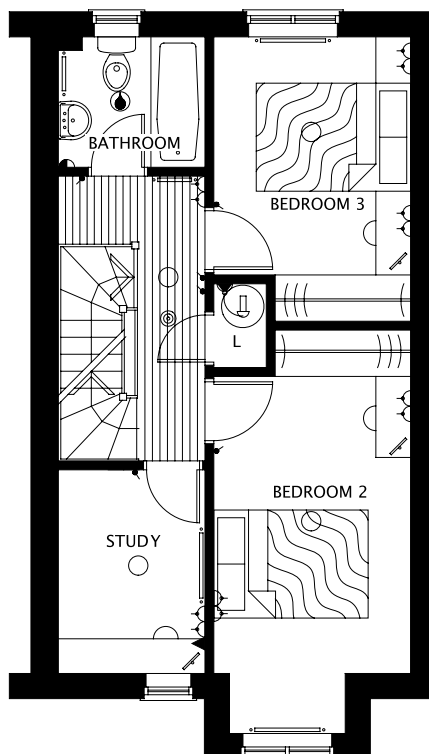
يوتوبيا للعقارات
UTOPIA Properties

WOODCOTE

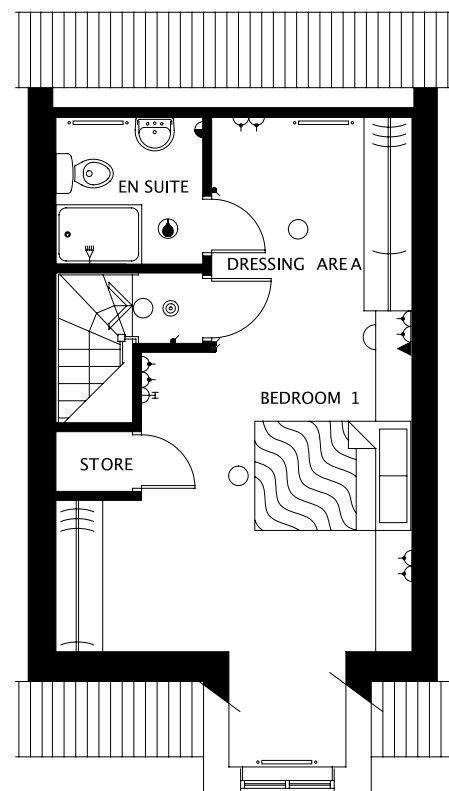
3 / 4 bedroom home



Ground floor



First floor



Second floor

KEY

- Light fitting
- ⏏ Electric socket
- ☎ Telephone outlet point
- Ⓜ T.V. aerial socket
- ⊙ Smoke detector
- Radiator
- Ⓛ Boiler
- W/M Washing machine space
- FZ Freezer space
- F Fridge space
- D/W Dishwasher space

IMPORTANT NOTICE: These particulars are for illustration only. We operate a policy of continuous product development and individual features such as windows, garages and elevational treatments may vary from time to time as may heating and electrical layouts. Consequently these particulars should be treated as general guidance only and cannot be relied upon as accurately describing any of the Specified Matters prescribed by any Order made under the Property Misdescriptions Act 1991. Nor do they constitute a contract, part of a contract or a warranty. Dimensions should not be used for carpet sizes, appliance spaces or items of furniture. Purchasers furniture may be of a different size to that indicated.

Ground Floor (Approximate dimensions)

Lounge	5030 max x 4580mm max (16'5" max x 15'0" max)
Kitchen	3942 max x 2485mm max (12'9" max x 8'2" max)

First Floor (Approximate dimensions)

Bedroom 2	5237 max x 2560mm max (17'2" max x 8'3" max)
Bedroom 3	3692 max x 2560mm max (12'11" max x 8'4" max)
Bedroom 4/study	2650 x 1925mm (8'9" x 6'3")

Second Floor (Approximate dimensions)

Bedroom 1	8337 max x 4580mm max (27'3" max x 15'0" max)
-----------	--

ALDERNEY

4 bedroom home



Broughton Mews, Haven Street, Broughton, Milton Keynes, MK10 7 AQ

- Quality fitted kitchen with family area
- Separate dining room
- Large lounge
- Master bedroom with ensuite

Developer



BARRATT
HOMES
find the one

Agents



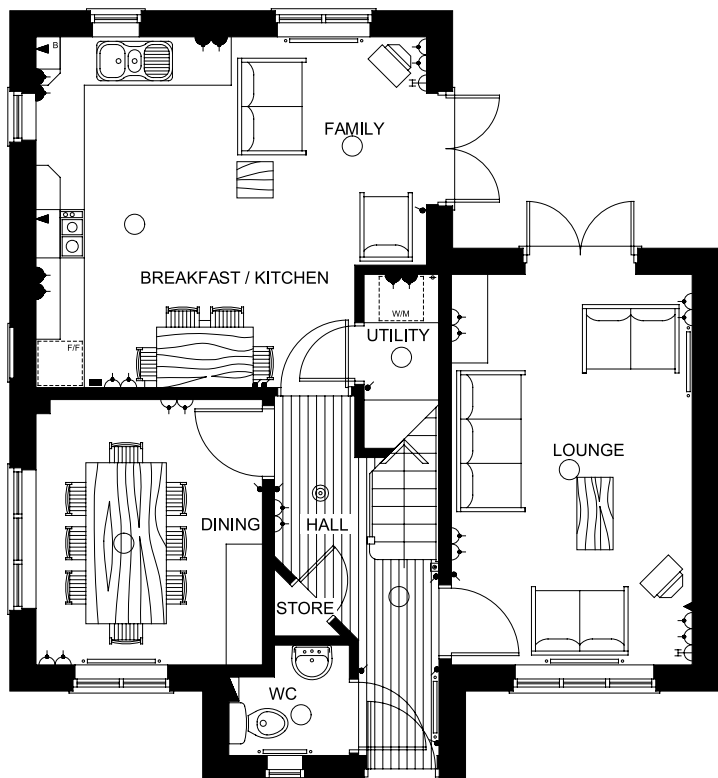
مجموعة توب العقارية
TOP REAL ESTATE
Marketing & Consultancy



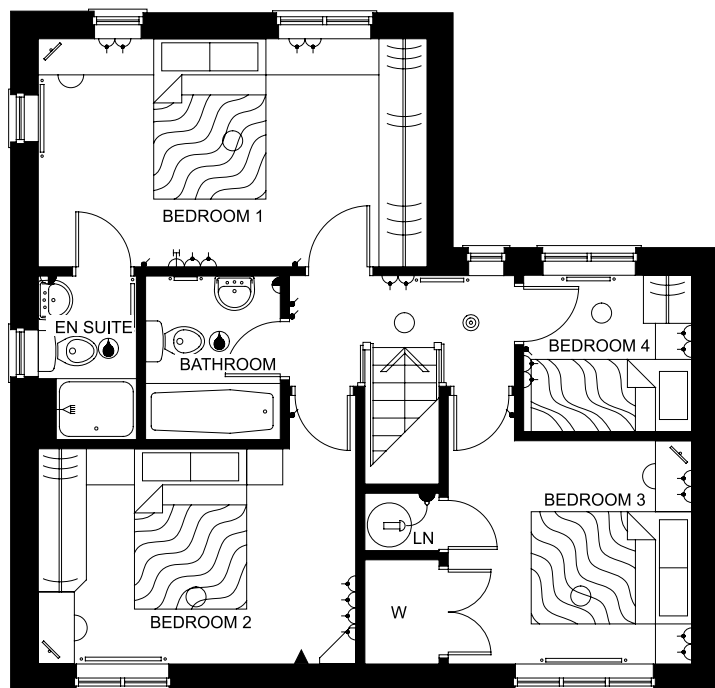
يوتوبيا للعقارات
UTOPIA Properties

ALDERNEY

4 bedroom home









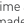





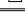




Ground floor



First floor

KEY

-  Lamp fitting
-  Splashproof IPX4 lamp fitting
-  Light switch
-  Switched socket outlet
-  Double switched socket outlet
-  Switched socket above worktop / cabinet
-  Double switched socket above worktop
-  Shaver point
-  Immersion heater with light indicator switch
-  T.V. aerial socket
-  Internal telephone point
-  Room thermostat
-  Smoke detector
-  Consumer unit
-  CO Detector
-  Boiler
-  Radiator

IMPORTANT NOTICE: These particulars are for illustration only. We operate a policy of continuous product development and individual features such as windows, garages and elevational treatments may vary from time to time as may heating and electrical layouts. Consequently these particulars should be treated as general guidance only and cannot be relied upon as accurately describing any of the Specified Matters prescribed by any Order made under the Property Misdescriptions Act 1991. Nor do they constitute a contract, part of a contract or a warranty. Dimensions should not be used for carpet sizes, appliance spaces or items of furniture. Purchasers furniture may be of a different size to that indicated.

Ground Floor (Approximate dimensions)

Lounge	4850 x 2990mm (15'9" x 9'8")
Kitchen	4355 max x 4850mm max (14'2" max x 15'9" max)
Dining room	3295 x 2812mm (10'8" x 9'2")

First Floor (Approximate dimensions)

Bedroom 1	2855 x 4850mm (9'4" x 15'9")
Bedroom 2	2695 x 3970mm (8'8" x 13'0")
Bedroom 3	2795 x 3045mm (9'2" x 10'0")
Bedroom 4	1960 x 2104mm (6'4" x 6'9")

THORNDALE

4 bedroom home



Broughton Mews, Haven Street, Broughton, Milton Keynes, MK10 7 AQ

- Modern kitchen with adjoining family room
- Spacious lounge with French doors
- Separate dining room
- Dressing area and ensuite to Master bedroom

Developer



BARRATT
HOMES

find the one

Agents



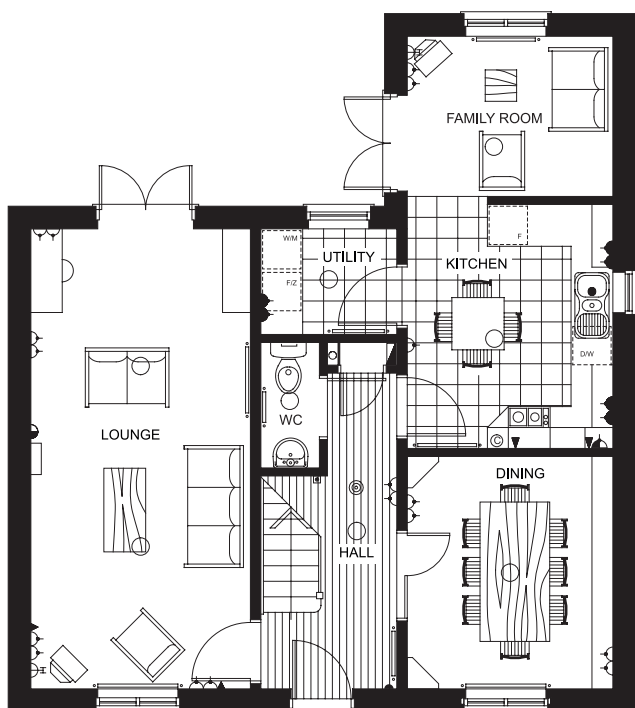
مجموعة توب العقارية
TOP REAL ESTATE
Marketing & Consultancy



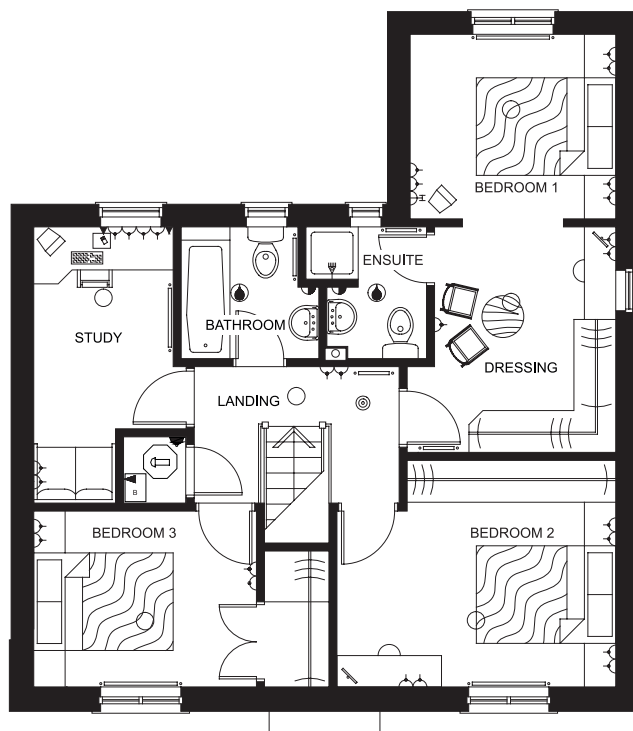
يوتوبيا للعقارات
UTOPIA Properties

THORNDALE

4 bedroom home



Ground floor



First floor

KEY

○ Light fitting	⊙ Smoke detector	FZ Freezer space
⌚ Electric socket	— Radiator	F Fridge space
⏏ Telephone outlet point	B Boiler	D/W Dishwasher space
⌚ T.V. aerial socket	W/M Washing machine space	

IMPORTANT NOTICE: These particulars are for illustration only. We operate a policy of continuous product development and individual features such as windows, garages and elevational treatments may vary from time to time as may heating and electrical layouts. Consequently these particulars should be treated as general guidance only and cannot be relied upon as accurately describing any of the Specified Matters prescribed by any Order made under the Property Misdescriptions Act 1991. Nor do they constitute a contract, part of a contract or a warranty. Dimensions should not be used for carpet sizes, appliance spaces or items of furniture. Purchasers furniture may be of a different size to that indicated.

Ground Floor (Approximate dimensions)

Lounge	6600 x 3150mm 21'6" x 10'3"
Dining room	3345 x 2950mm 10'9" x 9'6"
Kitchen/family room	5923 x 2950mm 19'4" x 9'6"
Utility	1525 x 1750mm 5'0" x 5'7"

First Floor (Approximate dimensions)

Bedroom 1	2658 x 2950mm 8'7 x 9'6
Dressing area	3245 x 2610mm 10'6 x 8'5
Ensuite	1900 max x 1805mm max 6'2 max x 5'9 max
Bedroom 2	3260 max x 4010mm max 10'6 max x 13'2 max
Bedroom 3	2533 x 3205mm 8'3 x 10'5
Bedroom 4/study	3972 max x 2010 max 13'0 max x 6'6 max
Bathroom	1900 max x 1985 max 6'2 max x 6'5 max

RYEDALE

4 bedroom home



Broughton Mews, Haven Street, Broughton, Milton Keynes, MK10 7 AQ

- Modern fitted kitchen
- Dining area
- Spacious lounge with French doors too garden
- Master suite with dressing area and ensuite

Developer



BARRATT
HOMES
find the one

Agents



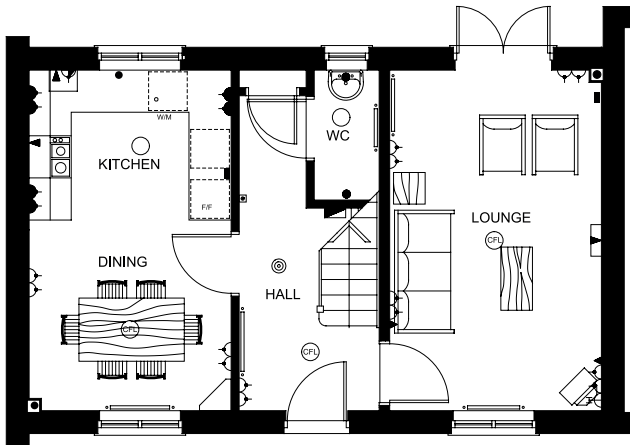
مجموعة توب العقارية
TOP REAL ESTATE
Marketing & Consultancy



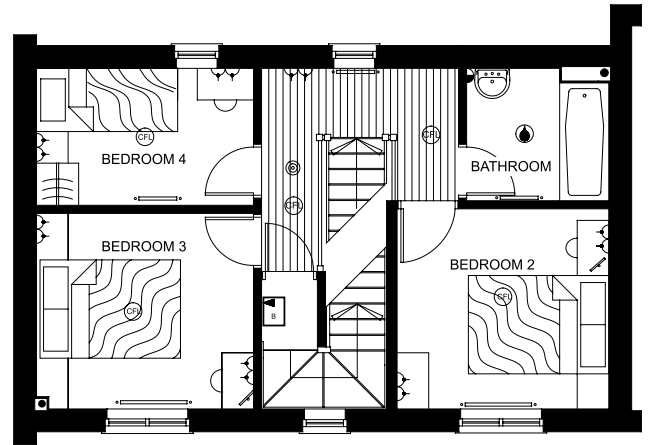
يوتوبيا للعقارات
UTOPIA Properties

RYEDALE

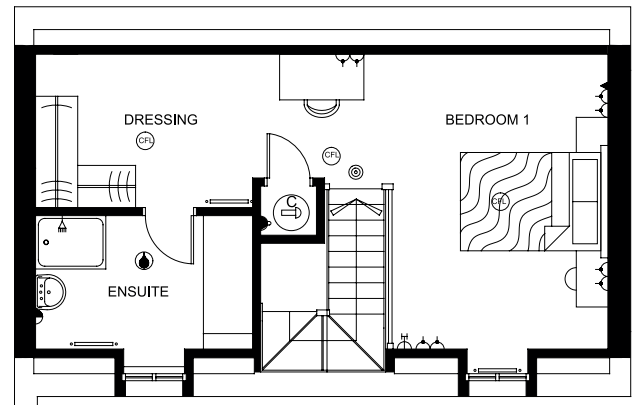
4 bedroom home



Ground floor



First floor



Second floor

- KEY**
- Light fitting
 - ⊕ Electric socket
 - ◀ Telephone outlet point
 - ⊞ T.V. aerial socket
 - ⊙ Smoke detector
 - Radiator
 - B Boiler
 - W/M Washing machine space
 - FZ Freezer space
 - F Fridge space
 - D/W Dishwasher space

IMPORTANT NOTICE: These particulars are for illustration only. We operate a policy of continuous product development and individual features such as windows, garages and elevational treatments may vary from time to time as may heating and electrical layouts. Consequently these particulars should be treated as general guidance only and cannot be relied upon as accurately describing any of the Specified Matters prescribed by any Order made under the Property Misdescriptions Act 1991. Nor do they constitute a contract, part of a contract or a warranty. Dimensions should not be used for carpet sizes, appliance spaces or items of furniture. Purchasers furniture may be of a different size to that indicated.

Ground Floor (Approximate dimensions)

Kitchen	2880 x 2140mm (9'5" x 7'0")
Dining	2880 x 2720mm (9'5" x 8'11")
Lounge	3020 x 4850mm (9'10" x 15'10")
WC	930 x 1850mm (3'0" x 6'1")

First Floor (Approximate dimensions)

Bedroom 2	3020 x 2850mm (9'10" x 9'4")
Bedroom 3	3090 x 2780mm (10'1" x 9'1")
Bedroom 4	3090 x 1950mm (10'1" x 6'5")
Bathroom	2030 x 1880mm (6'7" x 6'2")

Second Floor (Approximate dimensions)

Bedroom 1	4940 x 4200mm (16'2" x 13'9")
Dressing Area	3210 x 2180mm (10'6" x 7'2")
En-suite	3090 x 1900mm (10'1" x 6'3")

RYEBOURNE

4 bedroom home



Broughton Mews, Haven Street, Broughton, Milton Keynes, MK10 7 AQ

- Modern fitted kitchen
- Dining area with French doors too garden
- Spacious family lounge
- Master suite with dressing area and ensuite

Developer



BARRATT
HOMES
find the one

Agents



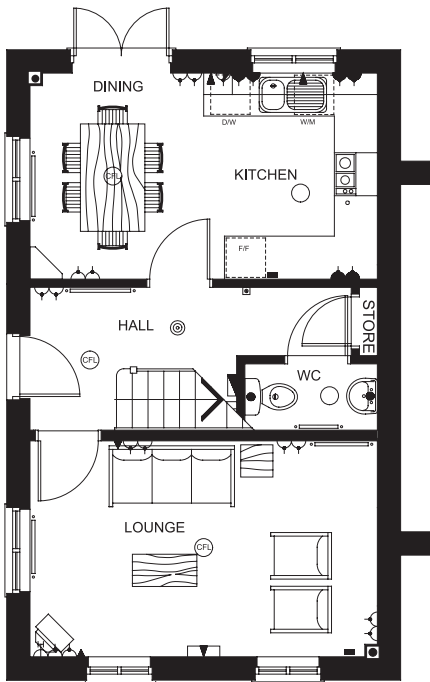
مجموعة توب العقارية
TOP REAL ESTATE
Marketing & Consultancy



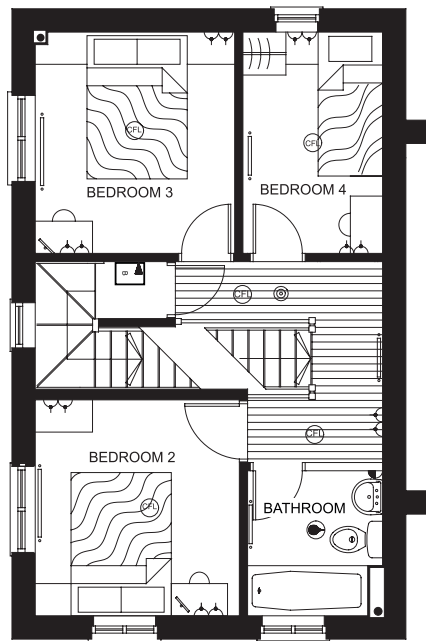
يوتوبيا للعقارات
UTOPIA Properties

RYEBOURNE

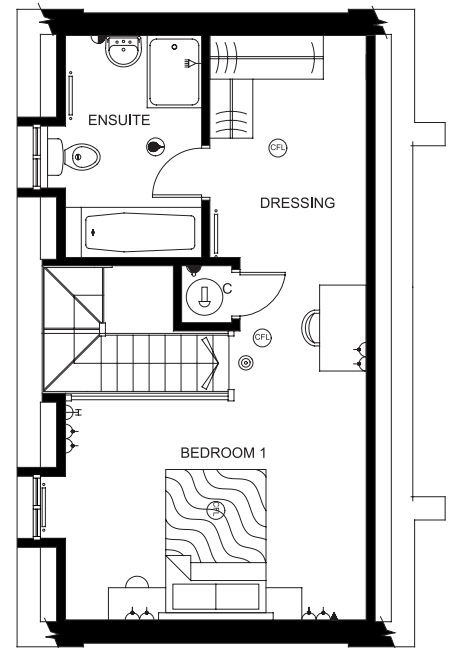
4 bedroom home



Ground floor



First floor



Second floor

KEY					
○	Light fitting	⊙	Smoke detector	FZ	Freezer space
⊖	Electric socket	—	Radiator	F	Fridge space
⚡	Telephone outlet point	B	Boiler	D/W	Dishwasher space
⊕	T.V. aerial socket	W/M	Washing machine space		

IMPORTANT NOTICE: These particulars are for illustration only. We operate a policy of continuous product development and individual features such as windows, garages and elevational treatments may vary from time to time as may heating and electrical layouts. Consequently these particulars should be treated as general guidance only and cannot be relied upon as accurately describing any of the Specified Matters prescribed by any Order made under the Property Misdescriptions Act 1991. Nor do they constitute a contract, part of a contract or a warranty. Dimensions should not be used for carpet sizes, appliance spaces or items of furniture. Purchasers furniture may be of a different size to that indicated.

Ground Floor (Approximate dimensions)

Lounge	4850 x 3020mm (15'10" x 9'10")
Dining Area	2720 x 2880mm (8'11" x 9'5")
Kitchen	2140 x 2880mm (7'0" x 9'5")

First Floor (Approximate dimensions)

Bedroom 2	2850 x 3020mm (9'4" x 9'10")
Bedroom 3	2780 x 3090mm (9'1" x 10'1")
Bedroom 4	1950 x 3090mm (6'5" x 10'1")
Bathroom	1880 x 2030mm (6'2" x 6'7")

Second Floor (Approximate dimensions)

Bedroom 1	4200 x 4940mm (13'9" x 16'2")
Dressing Area	2180 x 3210mm (7'2" x 10'6")
En-suite	1900 x 3090mm (6'3" x 10'1")

4 bedroom home

WENSLEYDALE

4 bedroom home



Broughton Mews, Haven Street, Broughton, Milton Keynes, MK10 7 AQ

- Quality fitted kitchen
- Separate dining room
- Spacious lounge with French doors to garden
- Master bedroom with ensuite

Developer



BARRATT
HOMES
find the one

Agents



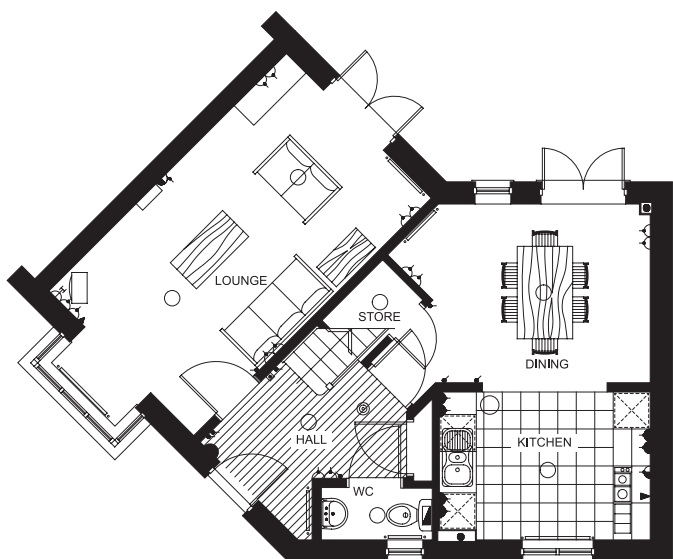
مجموعة توب العقارية
TOP REAL ESTATE
Marketing & Consultancy



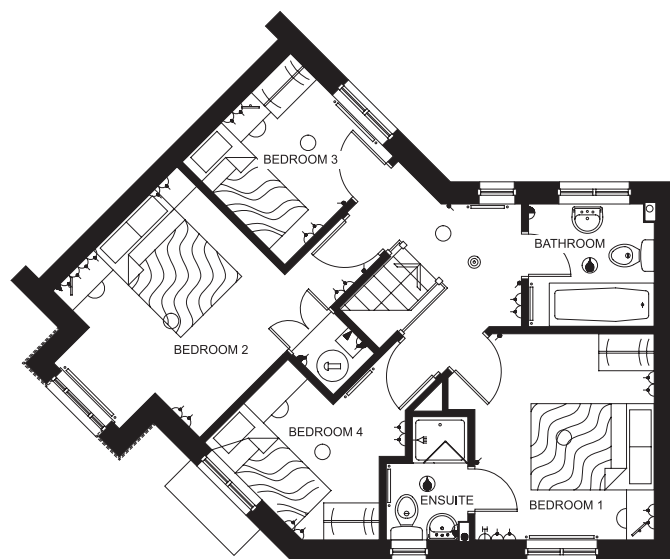
يوتوبيا للعقارات
UTOPIA Properties

WENSLEYDALE

4 bedroom home



Ground floor



First floor

KEY					
○	Light fitting	⊙	Smoke detector	FZ	Freezer space
⏏	Electric socket	—	Radiator	F	Fridge space
◀	Telephone outlet point	B	Boiler	D/W	Dishwasher space
⏏	T.V. aerial socket	W/M	Washing machine space		

IMPORTANT NOTICE: These particulars are for illustration only. We operate a policy of continuous product development and individual features such as windows, garages and elevational treatments may vary from time to time as may heating and electrical layouts. Consequently these particulars should be treated as general guidance only and cannot be relied upon as accurately describing any of the Specified Matters prescribed by any Order made under the Property Misdescriptions Act 1991. Nor do they constitute a contract, part of a contract or a warranty. Dimensions should not be used for carpet sizes, appliance spaces or items of furniture. Purchasers furniture may be of a different size to that indicated.

Ground Floor (Approximate dimensions)

Lounge	5450 x 3322mm 17'8" x 10'9"
Kitchen	2400 x 3431mm 7'8" x 11'2"
Dining room	2900 x 3300mm 9'5" x 10'8"

First Floor (Approximate dimensions)

Bedroom 1	3355 max x 2920m max 11'0" max x 9'5" max
Bedroom 2	2805 x 3375mm 9'2" x 11'0"
Bedroom 3	2500 x 2500mm 8'2" x 8'2"
Bedroom 4	1910 x 3120mm 6'2" x 10'2"
Bathroom	2000 x 2050mm 6'5" x 6'7"

4 bedroom home

THORNTON

4 bedroom home



Broughton Mews, Haven Street, Broughton, Milton Keynes, MK10 7 AQ

- Spacious lounge with French doors
- Quality fitted kitchen
- Separate dining room
- Master bedroom with ensuite

Developer



BARRATT
HOMES

find the one

Agents



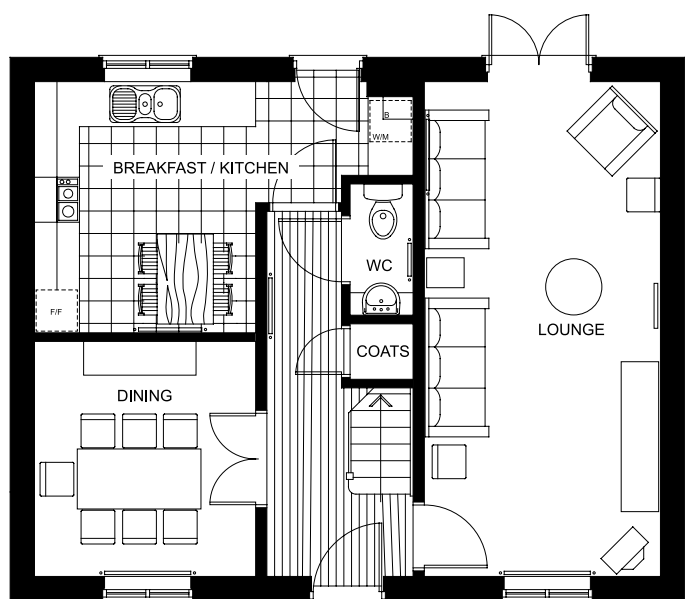
مجموعة توب العقارية
TOP REAL ESTATE
Marketing & Consultancy



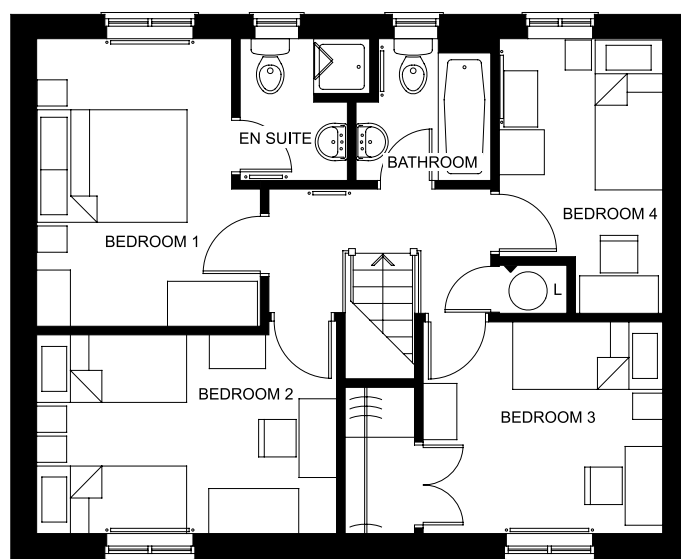
يوتوبيا للعقارات
UTOPIA Properties

THORNTON

4 bedroom home



Ground floor



First floor

KEY

- Lamp fitting
- Splashproof IPX4 lamp fitting
- Light switch
- Switched socket outlet
- Double switched socket outlet
- Switched socket above worktop / cabinet
- Double switched socket above worktop
- Shaver point
- Immersion heater with light indicator switch
- T.V. aerial socket
- Internal telephone point
- Room thermostat
- Smoke detector
- Consumer unit
- CO Detector
- Boiler
- Radiator

IMPORTANT NOTICE: These particulars are for illustration only. We operate a policy of continuous product development and individual features such as windows, garages and elevational treatments may vary from time to time as may heating and electrical layouts. Consequently these particulars should be treated as general guidance only and cannot be relied upon as accurately describing any of the Specified Matters prescribed by any Order made under the Property Misdescriptions Act 1991. Nor do they constitute a contract, part of a contract or a warranty. Dimensions should not be used for carpet sizes, appliance spaces or items of furniture. Purchasers furniture may be of a different size to that indicated.

Ground Floor (Approximate dimensions)

Lounge	6600 x 3150mm (21'6" x 10'3")
Kitchen	3360 max x 5050mm max (11'0" max x 16'6" max)
Dining room	3145 x 2945mm (10'3" x 9'7")

First Floor (Approximate dimensions)

Bedroom 1	3845 max x 2993mm max (12'8" max x 9'8" max)
Bedroom 2	2660 x 4010mm (8'7" x 13'2")
Bedroom 3	2833 x 3205mm (9'3" x 10'5")
Bedroom 4	3672 max x 2188mm (12'0" max x 7'2")

HARROWDALE

4 bedroom home



Broughton Mews, Haven Street, Broughton, Milton Keynes, MK10 7 AQ

- Kitchen with family area
- large lounge with French doors
- Master bedroom with ensuite
- Second bedroom with dressing room

Developer



BARRATT
HOMES
find the one

Agents



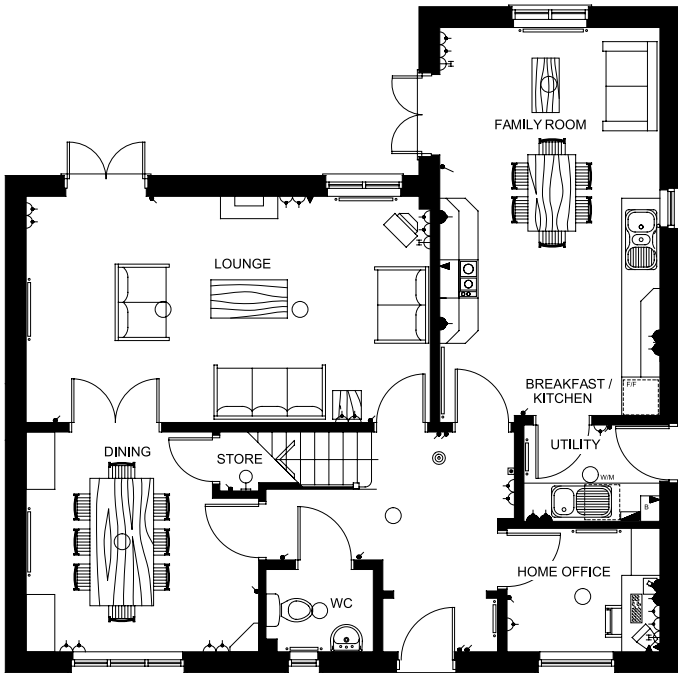
مجموعة توب العقارية
TOP REAL ESTATE
Marketing & Consultancy



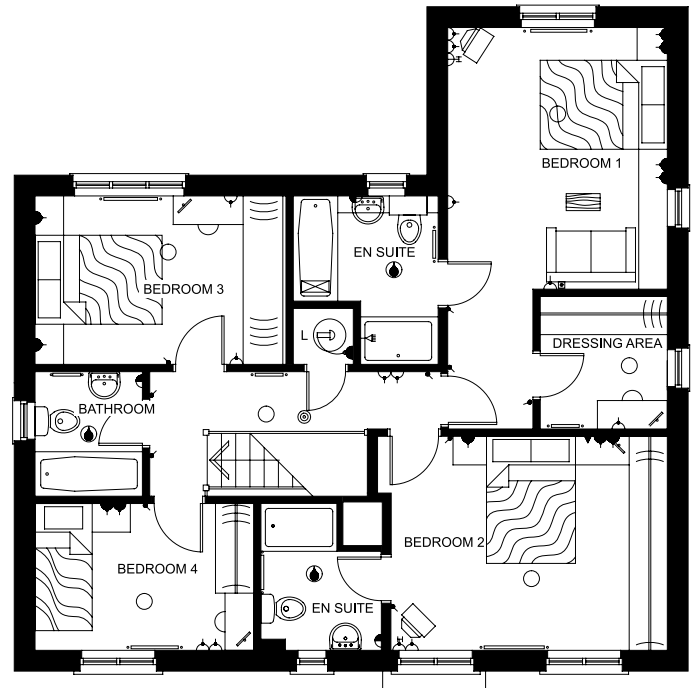
يوتوبيا للعقارات
UTOPIA Properties

HARROWDALE

4 bedroom home









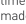


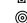


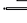

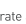


Ground floor



First floor

KEY

-  Lamp fitting
-  Splashproof IPX4 lamp fitting
-  Light switch
-  Switched socket outlet
-  Double switched socket outlet
-  Switched socket above worktop / cabinet
-  Double switched socket above worktop
-  Shaver point
-  Immersion heater with light indicator switch
-  T.V. aerial socket
-  Internal telephone point
-  Room thermostat
-  Smoke detector
-  Consumer unit
-  CO Detector
-  Boiler
-  Radiator

IMPORTANT NOTICE: These particulars are for illustration only. We operate a policy of continuous product development and individual features such as windows, garages and elevational treatments may vary from time to time as may heating and electrical layouts. Consequently these particulars should be treated as general guidance only and cannot be relied upon as accurately describing any of the Specified Matters prescribed by any Order made under the Property Misdescriptions Act 1991. Nor do they constitute a contract, part of a contract or a warranty. Dimensions should not be used for carpet sizes, appliance spaces or items of furniture. Purchasers furniture may be of a different size to that indicated.

Ground Floor (Approximate dimensions)

Lounge	3550 x 6344mm (11'6" x 20'8")
Kitchen	6090 x 3456mm (19'9" x 11'3")
Dining room	3450 x 3660mm max (11'3" x 12'0")
Study	1943 x 2400mm (6'4" x 7'8")

First Floor (Approximate dimensions)

Bedroom 1	6328 max x 3456mm max (20'7" max x 11'3" max)
Dressing room	2095 x 2010mm (6'8" x 6'7")
Bedroom 2	3378 x 4350mm (11'0" x 14'3")
Bedroom 3	2660 x 3959mm (8'7" x 13'0")
Bedroom 4	2320 x 3450mm (7'6" x 11'3")

4 bedroom home

HARROWDALE

4 bedroom home



Broughton Mews, Haven Street, Broughton, Milton Keynes, MK10 7 AQ

- Spacious lounge with French doors
- Quality fitted kitchen
- Separate dining room
- Master bedroom with ensuite

Developer



BARRATT
HOMES
find the one

Agents



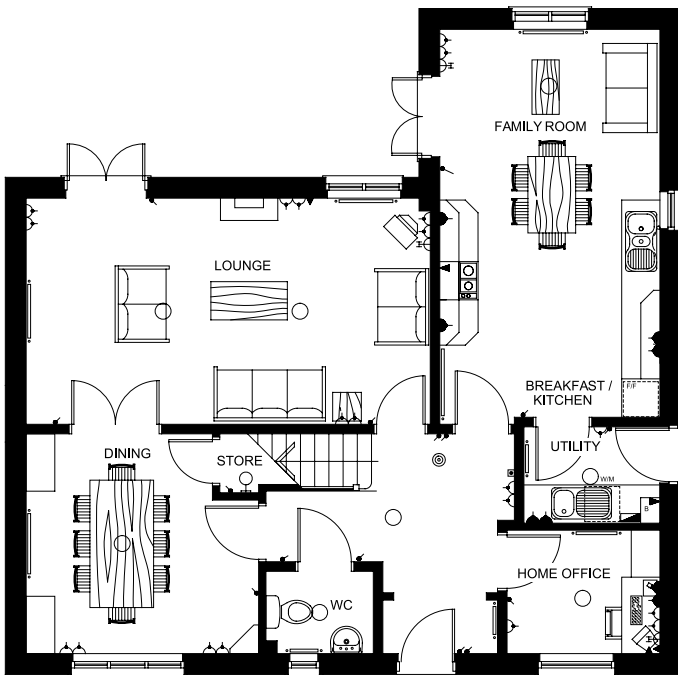
مجموعة توب العقارية
TOP REAL ESTATE
Marketing & Consultancy



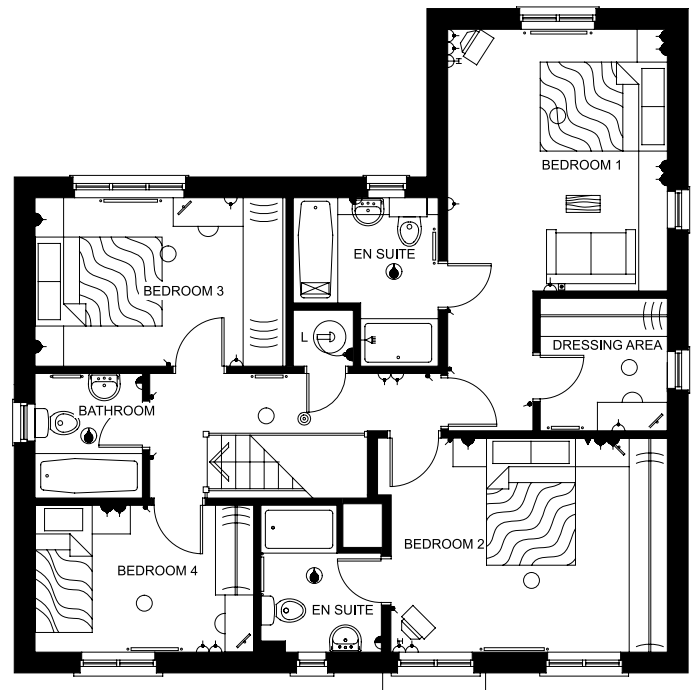
يوتوبيا للعقارات
UTOPIA Properties

HARROWDALE

4 bedroom home



Ground floor



First floor

KEY

- Lamp fitting
- Splashproof IPX4 lamp fitting
- ⚡ Light switch
- ⏏ Switched socket outlet
- ⏏ Double switched socket outlet
- ⏏ Switched socket above worktop / cabinet
- ⏏ Double switched socket above worktop
- ⏏ Shaver point
- ⏏ Immersion heater with light indicator switch
- 📡 T.V. aerial socket
- ☎ Internal telephone point
- 🌡 Room thermostat
- ⊙ Smoke detector
- ⚡ Consumer unit
- 🔥 CO Detector
- 🔥 Boiler
- 🔥 Radiator

IMPORTANT NOTICE: These particulars are for illustration only. We operate a policy of continuous product development and individual features such as windows, garages and elevational treatments may vary from time to time as may heating and electrical layouts. Consequently these particulars should be treated as general guidance only and cannot be relied upon as accurately describing any of the Specified Matters prescribed by any Order made under the Property Misdescriptions Act 1991. Nor do they constitute a contract, part of a contract or a warranty. Dimensions should not be used for carpet sizes, appliance spaces or items of furniture. Purchasers furniture may be of a different size to that indicated.

Ground Floor (Approximate dimensions)

Lounge	3550 x 6344mm (11'6" x 20'8")
Kitchen	6090 x 3456mm (19'9" x 11'3")
Dining room	3450 x 3660mm max (11'3" x 12'0")
Study	1943 x 2400mm (6'4" x 7'8")

First Floor (Approximate dimensions)

Bedroom 1	6328 max x 3456mm max (20'7" max x 11'3" max)
Dressing room	2095 x 2010mm (6'8" x 6'7")
Bedroom 2	3378 x 4350mm (11'0" x 14'3")
Bedroom 3	2660 x 3959mm (8'7" x 13'0")
Bedroom 4	2320 x 3450mm (7'6" x 11'3")

CHILLINGHAM

4 / 5 bedroom home



Broughton Mews, Haven Street, Broughton, Milton Keynes, MK10 7 AQ

- Quality fitted kitchen
- Large family lounge
- Master bedroom with ensuite
- Study / bedroom 5

Developer



BARRATT
HOMES
find the one

Agents



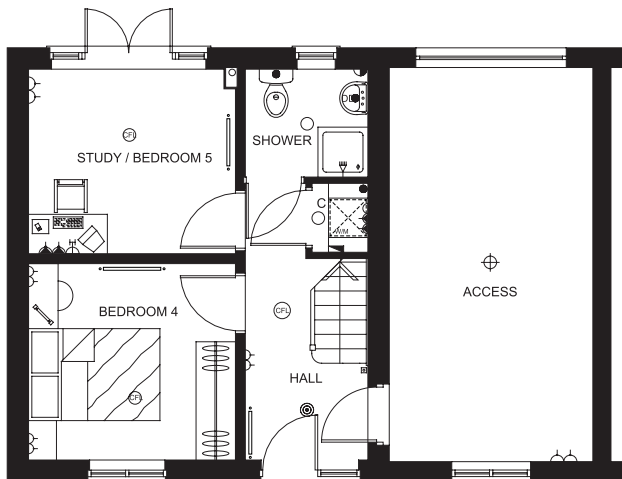
مجموعة توب العقارية
TOP REAL ESTATE
Marketing & Consultancy



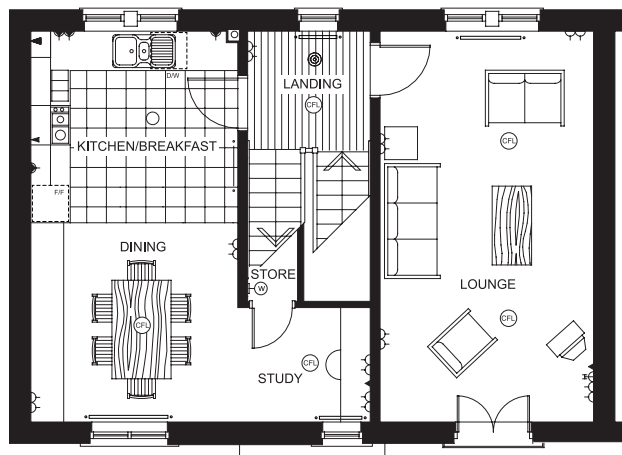
يوتوبيا للعقارات
UTOPIA Properties

CHILLINGHAM

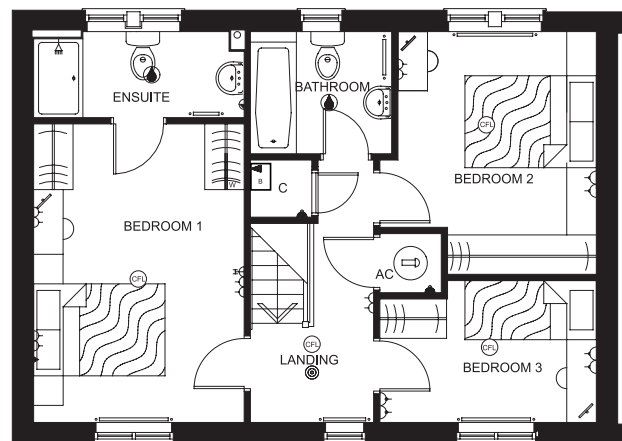
4 / 5 bedroom home



Ground floor



First floor



Second floor

KEY

- Light fitting
- ⦿ Electric socket
- ◀ Telephone outlet point
- ⦿ T.V. aerial socket
- ⊙ Smoke detector
- Radiator
- B Boiler
- WM Washing machine space
- FZ Freezer space
- F Fridge space
- D/W Dishwasher space

IMPORTANT NOTICE: These particulars are for illustration only. We operate a policy of continuous product development and individual features such as windows, garages and elevational treatments may vary from time to time as may heating and electrical layouts. Consequently these particulars should be treated as general guidance only and cannot be relied upon as accurately describing any of the Specified Matters prescribed by any Order made under the Property Misdescriptions Act 1991. Nor do they constitute a contract, part of a contract or a warranty. Dimensions should not be used for carpet sizes, appliance spaces or items of furniture. Purchasers furniture may be of a different size to that indicated.

Ground Floor (Approximate dimensions)

Study/Bedroom 5	3150 x 2810mm (10'4" x 9'2")
Bedroom 4	3150 x 2990mm (10'4" x 9'9")
Shower	1870 x 1640mm (6'1" x 5'4")

First Floor (Approximate dimensions)

Lounge	3250 x 5950mm (10'8" x 19'6")
Study Area	2020 x 1740 (6'7" x 5'8")
Dining	3150 x 3030mm (10'4" x 9'11")
Kitchen	3150 x 2920mm (10'4" x 9'6")

Second Floor (Approximate dimensions)

Bedroom 1	3200 x 4550mm (10'6" x 14'10")
Ensuite	3200 x 1310mm (10'6" x 4'3")
Bedroom 2	3020 x 3700mm (9'11" x 12'1")
Bedroom 3	3300 x 2160mm (10'9" x 7'1")
Bathroom	2150 x 1860mm (7'0" x 6'1")

5 bedroom home

MARLOWE

5 bedroom home



Broughton Mews, Haven Street, Broughton, Milton Keynes, MK10 7 AQ

- Modern kitchen with family room
- Spacious lounge
- Three double bedrooms
- Master bedroom with ensuite and dressing area

Developer



BARRATT
HOMES

find the one

Agents



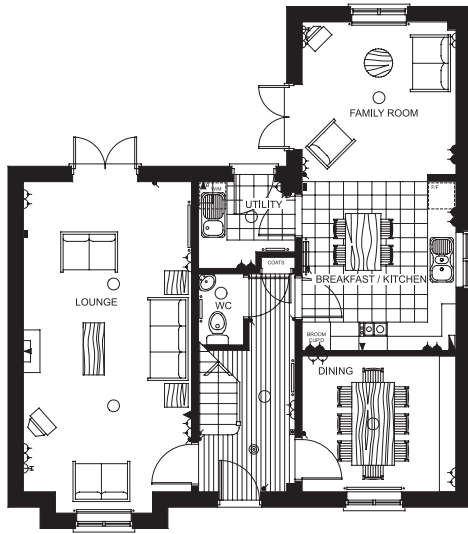
مجموعة توب العقارية
TOP REAL ESTATE
Marketing & Consultancy



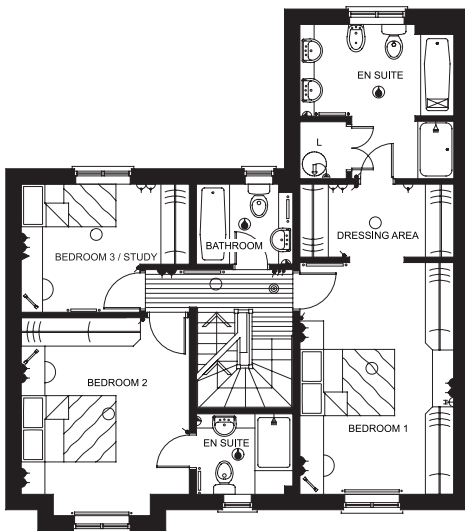
يوتوبيا للعقارات
UTOPIA Properties

MARLOWE

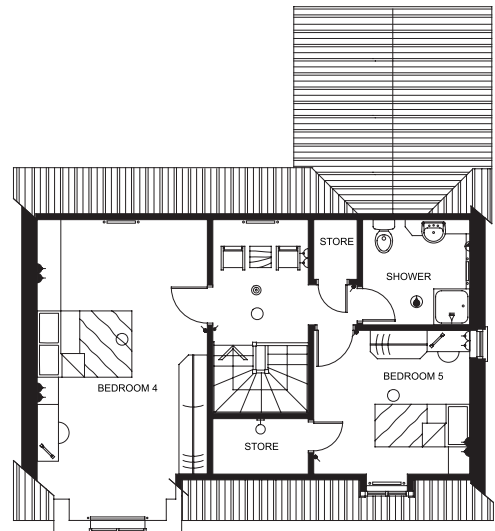
5 bedroom home



Ground floor



First floor



Second floor

KEY

- Lamp fitting
- Splashproof IPX4 lamp fitting
- Light switch
- Switched socket outlet
- Double switched socket outlet
- Switched socket above worktop / cabinet
- Double switched socket above worktop
- Shaver point
- Immersion heater with light indicator switch
- T.V. aerial socket
- Internal telephone point
- Room thermostat
- Smoke detector
- Consumer unit
- CO Detector
- Boiler
- Radiator

IMPORTANT NOTICE: These particulars are for illustration only. We operate a policy of continuous product development and individual features such as windows, garages and elevational treatments may vary from time to time as may heating and electrical layouts. Consequently these particulars should be treated as general guidance only and cannot be relied upon as accurately describing any of the Specified Matters prescribed by any Order made under the Property Misdescriptions Act 1991. Nor do they constitute a contract, part of a contract or a warranty. Dimensions should not be used for carpet sizes, appliance spaces or items of furniture. Purchasers furniture may be of a different size to that indicated.

Ground Floor (Approximate dimensions)

Lounge	7000 x 3550mm (22'9" x 11'6")
Kitchen/family room	6949 x 3250mm (22'8" x 10'6")
Dining room	2870 x 3250mm (9'4" x 10'6")

First Floor (Approximate dimensions)

Bedroom 1	4905 x 3250mm (16'1" x 10'6")
Dressing room	1550 x 3250mm (5'1" x 10'6")
Bedroom 2	3740 x 3550mm (12'2" x 11'6")
Bedroom 3	2715 max x 3550mm max (8'9" max x 11'6" max)

Second Floor (Approximate dimensions)

Bedroom 4	6363 max x 3605mm (20'8" max x 11'8")
Bedroom 5	3046 x 3215mm (9'10" x 10'5")

Broughton Mews

Haven Street, Broughton,
Milton Keynes, MK10 7 AQ

Directions



Developer



BARRATT
HOMES
find the one

Agents



مجموعة توب العقارية
TOP REAL ESTATE
Marketing & Consultancy



يوتوبيا للعقارات
UTOPIA Properties

© www.giveaway.co.uk 2011 Tel: 0800 019 0027.

OS data. PU100040256. Crown © 2011.



MILTON
KEYNES

Broughton Mews

Haven Street, Broughton,
Milton Keynes, MK10 7 AQ

Site layout



IMPORTANT NOTICE:

The site layout is intended for illustration purposes only and may change to meet our policy of continuous product development or, for example, in response to market demand or ground conditions. Consequently it should be treated as general guidance and cannot be relied upon as accurately describing any of the Specified Matters prescribed by any Order made under the Property Misdescriptions Act 1991. Nor do the contents constitute a contract, part of a contract or a warranty. Subject to planning permission. BNO/GREENKEEPERS/03/11.