

# Beachampton

## 4 bedroom house



We operate a policy of continuous product development and individual features and elevational treatments are subject to change since this computer generated image was produced. Please ensure you check details with the sales adviser of your particular plot.

- A beautiful three storey, four bedroom family home
- The ground floor features an open-plan lounge/dining area and separate modern kitchen
- The first floor offers two double bedrooms and a modern family bathroom
- To the second floor is the master bedroom, single bedroom and modern family bathroom

Developer



**BARRATT**  
HOMES  
*find the one*

Agent in Kuwait



مجموعة توب العقارية  
**TOP REAL ESTATE**  
Marketing & Consultancy

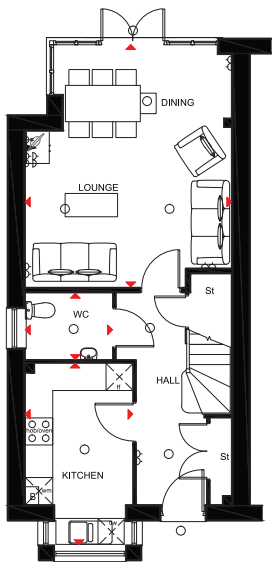
Agent in Qatar



يوتوبيا للعقارات  
**UTOPIA** Properties

# Beachampton

## 4 bedroom house

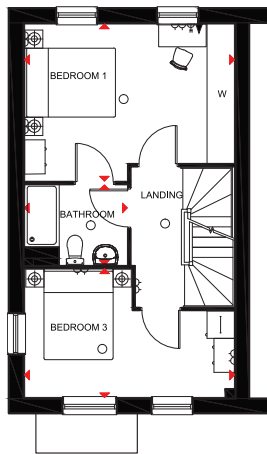


### Ground Floor

Lounge/ Dining	5329* x 4540mm	17'5" x 14'10"
Kitchen	3991*x 2362mm	13'1" x 7'9"
W.C	1916 x 1449mm	6'3" x 4'9"

(Approximate dimensions)

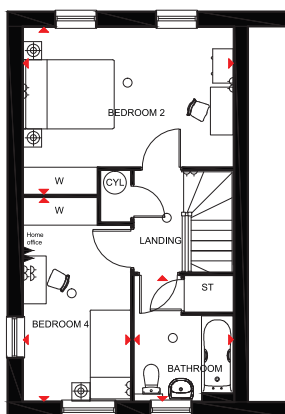
\* Into bay



### First Floor

Bedroom 1	4620 x 3457 mm	15'1" x 11'4"
Bedroom 3	4620 x 2831 mm	15'1" x 9'3"
Bathroom	2259 x 1763 mm	7'5" x 5'9"

(Approximate dimensions)



### Second Floor

Bedroom 2	4620 x 3664 mm	15'1" x 12'0"
Bedroom 4	4473 x 2356 mm	14'8" x 7'8"
Bathroom	2755 x 2175 mm	9'0" x 7'1"

(Approximate dimensions)

\* window features to end plots only

<b>KEY</b>	○ Light fitting	⚡ T.V. aerial socket	B Boiler	wm Washing machine space	◀▶ Dimension location
	⚡ Electric socket	⚡ Shaver socket	ST Store	f/f Fridge/freezer space	
	◀ Telephone outlet point	— Radiator	CYL Cylinder	dw Dishwasher space	

Visit [barratthomes.co.uk](http://barratthomes.co.uk) for further information

Kuwait : Tel : +965 25757 871/ 2/ 3 - Fax : +965 25757 874 - [www.toprealestategroup.com](http://www.toprealestategroup.com)

Qatar : Tel : +974 444 33 044 / 444 33 033 - Fax : +965 443 11 180 - [www.utopiapropertiesgroup.com](http://www.utopiapropertiesgroup.com)

**IMPORTANT NOTICE:** [Computer Generated] Images are for illustrative purposes only. Individual features such as windows, brick and other materials' colours may vary, as may heating and electrical layouts. Floor plans are intended to give a general indication of the proposed floor layout only. The dimensions are accurate to within +or- 50mm. Dimensions should not be used for carpet sizes, appliance spaces or items of furniture. Please ask our sales adviser for details of the treatments specified for individual plots. [Computer Generated] Images and dimensions are not intended to form part of any contract or warranty. Furniture and landscaping is shown for illustrative purposes only.

BWM/213700/BEACHAMPTON/JUL2013

# Soulbury

## 3 bedroom house



We operate a policy of continuous product development and individual features and elevational treatments are subject to change since this computer generated image was produced. Please ensure you check details with the sales adviser of your particular plot.

- A stylish/modern three bedroom family home
- The ground floor features open plan lounge/dining area and separate modern kitchen
- The second floor offers two double bedrooms, one with en suite, one single bedroom and modern family bathroom

Developer



**BARRATT**  
HOMES  
*find the one*

Agent in Kuwait



مجموعة توب العقارية  
**TOP REAL ESTATE**  
Marketing & Consultancy

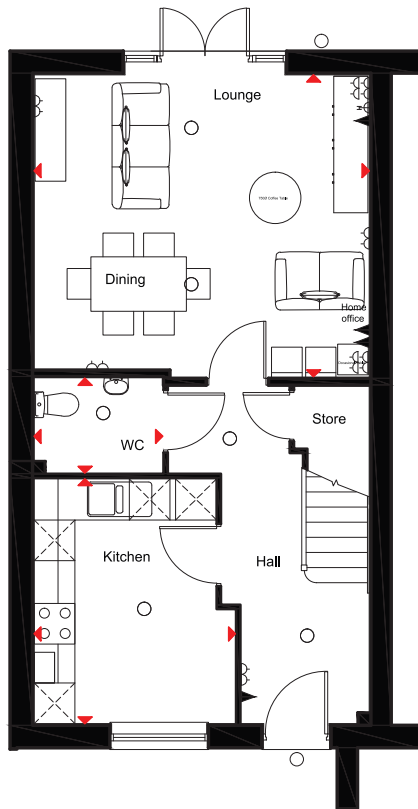
Agent in Qatar



يوتوبيا للعقارات  
**UTOPIA** Properties

# Soulbury

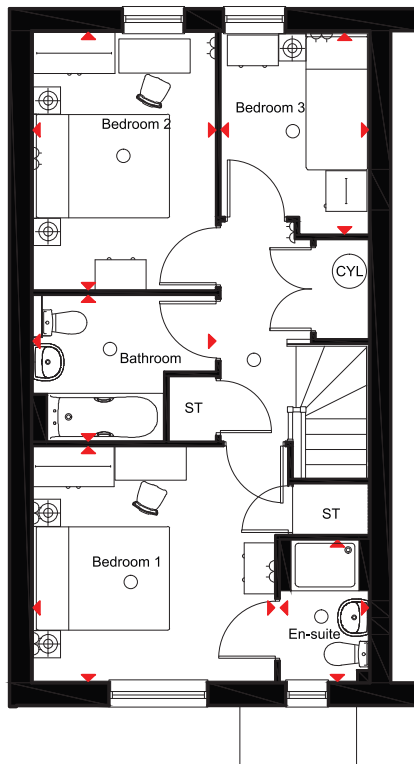
## 3 bedroom house



### Ground Floor

Lounge/Dining	4922 x 4431 mm	16'1" x 14'6"
Kitchen	3596 x 2955 mm	11'9" x 9'8"
W.C	1388 x 1886 mm	4'6" x 6'2"

[Approximate dimensions]



### First Floor

Bedroom 1	3545 x 3444 mm	11'7" x 11'3"
Bedroom 2	3773 x 2676 mm	12'4" x 8'9"
Bedroom 3	2939 x 2158 mm	9'7" x 7'1"
En-suite	2075 x 1289 mm	6'9" x 4'2"
Bathroom	2676 x 2134 mm	8'9" x 7'0"

[Approximate dimensions]

\* window features to end plots only

<b>KEY</b>	○ Light fitting	⚡ T.V. aerial socket	B Boiler	wm Washing machine space	◀▶ Dimension location
	⏏ Electric socket	⚡ Shaver socket	ST Store	f/f Fridge/freezer space	
	◀ Telephone outlet point	— Radiator	CYL Cylinder	dw Dishwasher space	

Visit [barratthomes.co.uk](http://barratthomes.co.uk) for further information

Kuwait : Tel : +965 25757 871/ 2/ 3 - Fax : +965 25757 874 - [www.toprealestategroup.com](http://www.toprealestategroup.com)

Qatar : Tel : +974 444 33 044 / 444 33 033 - Fax : +965 443 11 180 - [www.utopiapropertiesgroup.com](http://www.utopiapropertiesgroup.com)

**IMPORTANT NOTICE:** [Computer Generated] Images are for illustrative purposes only. Individual features such as windows, brick and other materials' colours may vary, as may heating and electrical layouts. Floor plans are intended to give a general indication of the proposed floor layout only. The dimensions are accurate to within +or- 50mm. Dimensions should not be used for carpet sizes, appliance spaces or items of furniture. Please ask our sales adviser for details of the treatments specified for individual plots. [Computer Generated] Images and dimensions are not intended to form part of any contract or warranty. Furniture and landscaping is shown for illustrative purposes only.

BWM/213701/CALDECOTTE/JULY2013



# Sherington

## 4 bedroom house



We operate a policy of continuous product development and individual features and elevational treatments are subject to change since this computer generated image was produced. Please ensure you check details with the sales adviser of your particular plot.

- A beautiful and spacious four bedroom family home
- The ground floor features an open-plan kitchen/dining area and spacious lounge with bay
- The first floor offers the master bedroom with en suite, single bedroom and modern family bathroom
- To the second floor are two double bedrooms

Developer



**BARRATT**  
HOMES  
*find the one*

Agent in Kuwait



مجموعة توب العقارية  
**TOP REAL ESTATE**  
Marketing & Consultancy

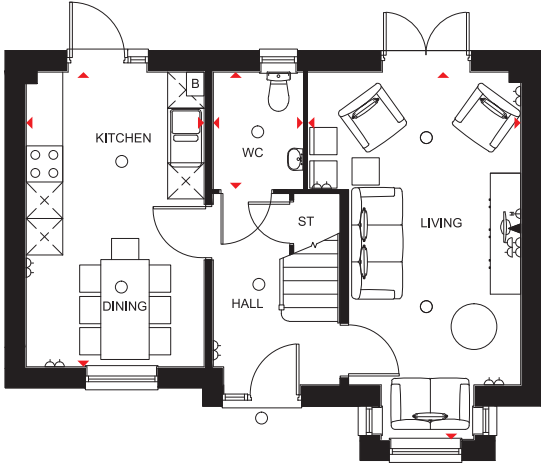
Agent in Qatar



يوتوبيا للعقارات  
**UTOPIA** Properties

# Sherington

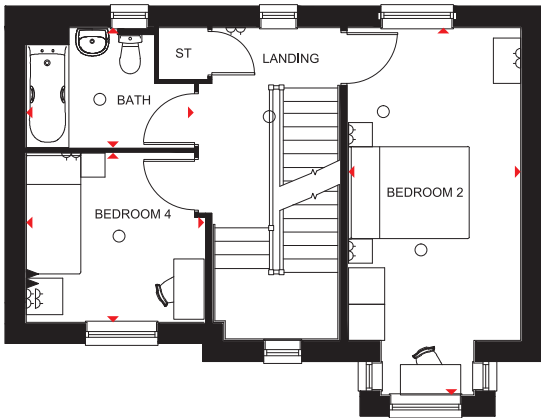
## 4 bedroom house



### Ground Floor

Lounge	6070* x 3511* mm	19'11" x 11'6"
Kitchen/ Dining	4870 x 2938 mm	15'11" x 9'7"
WC	1931 x 1482 mm	6'4" x 4'10"

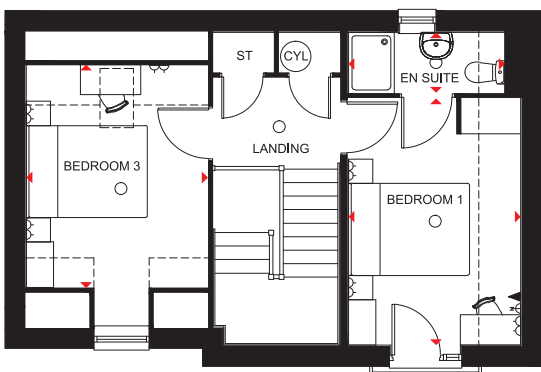
(Approximate dimensions)



### First Floor

Bedroom 2	6070* x 2847 mm	19'11" x 9'4"
Bedroom 4	2938 x 2799 mm	9'7" x 9'2"
Bathroom	2768 x 1983mm	9'1" x 6'6"

(Approximate dimensions)



### Second Floor

Bedroom 1	4077 x 2847mm	13'4" x 9'4"
En Suite	2568 x 1000mm	8'5" x 3'3"
Bedroom 3	3693 x 3000mm	12'1" x 9'10"

(Approximate dimensions)

\* Widest Point in Room

\* window features to end plots only

<b>KEY</b>	○ Light fitting	⊘ T.V. aerial socket	B Boiler	◀▶ Dimension location
	⏏ Electric socket	⏏ Shaver socket	ST Store	
	◀ Telephone outlet point	— Radiator	CYL Cylinder	

Visit [barratthomes.co.uk](http://barratthomes.co.uk) for further information

Kuwait : Tel : +965 25757 871/ 2/ 3 - Fax : +965 25757 874 - [www.toprealestategroup.com](http://www.toprealestategroup.com)

Qatar : Tel : +974 444 33 044 / 444 33 033 - Fax : +965 443 11 180 - [www.utopiapropertiesgroup.com](http://www.utopiapropertiesgroup.com)

**IMPORTANT NOTICE:** [Computer Generated] Images are for illustrative purposes only. Individual features such as windows, brick and other materials' colours may vary, as may heating and electrical layouts. Floor plans are intended to give a general indication of the proposed floor layout only. The dimensions are accurate to within +or- 50mm. Dimensions should not be used for carpet sizes, appliance spaces or items of furniture. Please ask our sales adviser for details of the treatments specified for individual plots. [Computer Generated] Images and dimensions are not intended to form part of any contract or warranty. Furniture and landscaping is shown for illustrative purposes only.

BWM/213701/CALDECOTTE/JULY2013

# Emerson

## 3 bedroom house



We operate a policy of continuous product development and individual features and elevational treatments are subject to change since this computer generated image was produced. Please ensure you check details with the sales adviser of your particular plot.

- A beautiful three bedroom family home
- The ground floor features an open-plan kitchen/dining area and spacious lounge with large bay window.
- The first floor offers two double bedrooms, one with en suite, one single bedroom and modern family bathroom

Developer



**BARRATT**  
HOMES  
*find the one*

Agent in Kuwait



مجموعة توب العقارية  
**TOP REAL ESTATE**  
Marketing & Consultancy

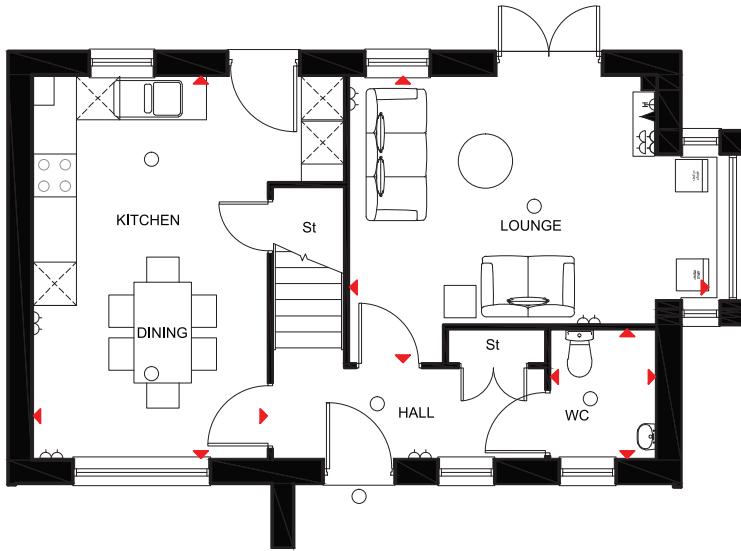
Agent in Qatar



يوتوبيا للعقارات  
**UTOPIA** Properties

# Emerson

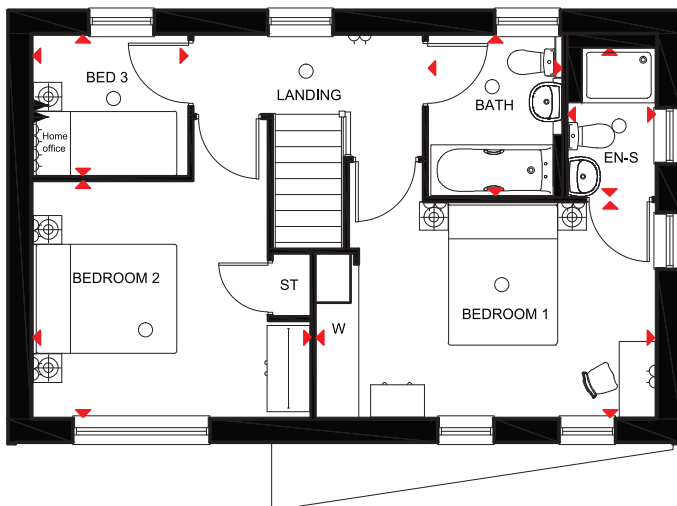
## 3 bedroom house



### Ground Floor

Lounge	5133 x 3980 mm	16'10" x 13'0"
Kitchen/Dining	5313 x 3257 mm	17'5" x 10'8"
W.C	1795 x 1456 mm	5'10" x 4'9"

[Approximate dimensions]



### First Floor

Bedroom 1	4729 x 3000 mm	15'6" x 9'10"
Bedroom 2	3869 x 3288 mm	12'8" x 10'9"
Bedroom 3	2150 x 1950 mm	7'0" x 6'4"
En-suite	2060 x 1214 mm	6'9" x 3'11"
Bathroom	2225 x 1854 mm	7'3" x 6'1"

[Approximate dimensions]

\* window features to end plots only

<b>KEY</b>	○ Light fitting	⚡ T.V. aerial socket	B Boiler	wm Washing machine space	◀▶ Dimension location
	⏏ Electric socket	⚡ Shaver socket	ST Store	f/f Fridge/freezer space	
	⏏ Telephone outlet point	— Radiator	CYL Cylinder	dw Dishwasher space	

Visit [barratthomes.co.uk](http://barratthomes.co.uk) for further information

Kuwait : Tel : +965 25757 871/ 2/ 3 - Fax : +965 25757 874 - [www.toprealestategroup.com](http://www.toprealestategroup.com)

Qatar : Tel : +974 444 33 044 / 444 33 033 - Fax : +965 443 11 180 - [www.utopiapropertiesgroup.com](http://www.utopiapropertiesgroup.com)

**IMPORTANT NOTICE:** [Computer Generated] Images are for illustrative purposes only. Individual features such as windows, brick and other materials' colours may vary, as may heating and electrical layouts. Floor plans are intended to give a general indication of the proposed floor layout only. The dimensions are accurate to within +or- 50mm. Dimensions should not be used for carpet sizes, appliance spaces or items of furniture. Please ask our sales adviser for details of the treatments specified for individual plots. [Computer Generated] Images and dimensions are not intended to form part of any contract or warranty. Furniture and landscaping is shown for illustrative purposes only.

BWM/213701/CALDECOTTE/JULY2013



# Calverton

## 3 bedroom house



We operate a policy of continuous product development and individual features and elevational treatments are subject to change since this computer generated image was produced. Please ensure you check details with the sales adviser of your particular plot.

- A stylish three storey, three bedroom family home
- The ground floor features an open-plan kitchen/dining area and study/family room
- The first floor offers one double bedroom, family living room and modern family bathroom
- To the second floor is two double bedrooms, with an en suite to the master bedroom

Developer



**BARRATT**  
HOMES  
*find the one*

Agent in Kuwait



مجموعة توب العقارية  
**TOP REAL ESTATE**  
Marketing & Consultancy

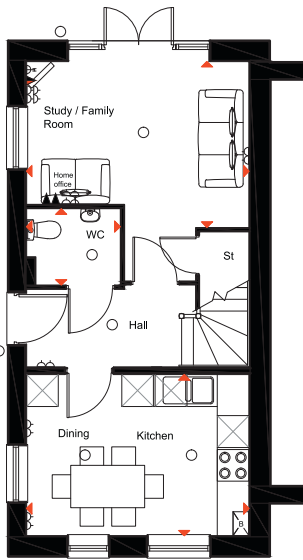
Agent in Qatar



يوتوبيا للعقارات  
**UTOPIA** Properties

# Calverton

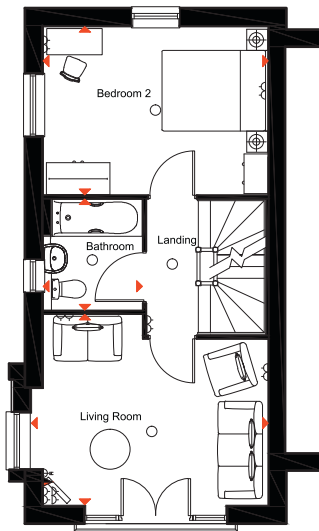
## 3 bedroom house



### Ground Floor

Family Room	4200 x 3129 mm	13'9" x 10'3"
Kitchen/ Dining	4200 x 3041 mm	13'9" x 9'11"
W.C	1766 x 1434 mm	5'9" x 4'8"

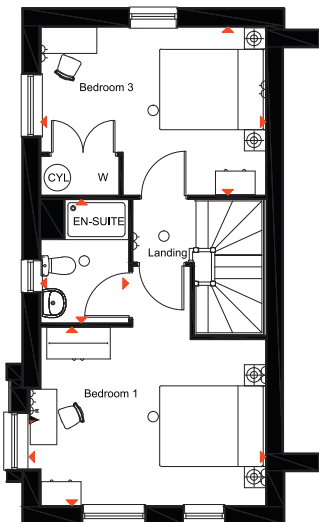
(Approximate dimensions)



### First Floor

Bedroom 2	4240 x 3169 mm	13'10" x 10'4"
Living Room	4465* x 3590 mm	14'7" x 11'9"
Bathroom	2088 x 1864 mm	6'10" x 6'1"

(Approximate dimensions)



### Second Floor

Bedroom 3	4240 x 3169 mm	13'10" x 10'4"
Bedroom 1	4465* x 3364 mm	14'7" x 11'0"
En-Suite	2324 x 1646 mm	7'7" x 5'4"

(Approximate dimensions)

\* Widest Point

\* window features to end plots only

<b>KEY</b>	○ Light fitting	⚡ T.V. aerial socket	B Boiler	wm Washing machine space	◀▶ Dimension location
	⚡ Electric socket	⚡ Shaver socket	ST Store	f/f Fridge/freezer space	
	◀ Telephone outlet point	— Radiator	CYL Cylinder	dw Dishwasher space	

Visit [barratthomes.co.uk](http://barratthomes.co.uk) for further information

Kuwait : Tel : +965 25757 871/ 2/ 3 - Fax : +965 25757 874 - [www.toprealestategroup.com](http://www.toprealestategroup.com)

Qatar : Tel : +974 444 33 044 / 444 33 033 - Fax : +965 443 11 180 - [www.utopiapropertiesgroup.com](http://www.utopiapropertiesgroup.com)

**IMPORTANT NOTICE:** [Computer Generated] Images are for illustrative purposes only. Individual features such as windows, brick and other materials' colours may vary, as may heating and electrical layouts. Floor plans are intended to give a general indication of the proposed floor layout only. The dimensions are accurate to within +or- 50mm. Dimensions should not be used for carpet sizes, appliance spaces or items of furniture. Please ask our sales adviser for details of the treatments specified for individual plots. [Computer Generated] Images and dimensions are not intended to form part of any contract or warranty. Furniture and landscaping is shown for illustrative purposes only.

BWM/213701/CALDECOTTE/JULY2013

# Caldecotte

## 4 bedroom house



We operate a policy of continuous product development and individual features and elevational treatments are subject to change since this computer generated image was produced. Please ensure you check details with the sales adviser of your particular plot.

- A stylish four bedroom family home
- The ground floor features an open-plan kitchen/dining area and lounge
- The first floor offers three double bedrooms, an en suite to the master bedroom, one single bedroom and modern family bathroom

Developer



**BARRATT**  
HOMES  
*find the one*

Agent in Kuwait



مجموعة توب العقارية  
**TOP REAL ESTATE**  
Marketing & Consultancy

Agent in Qatar

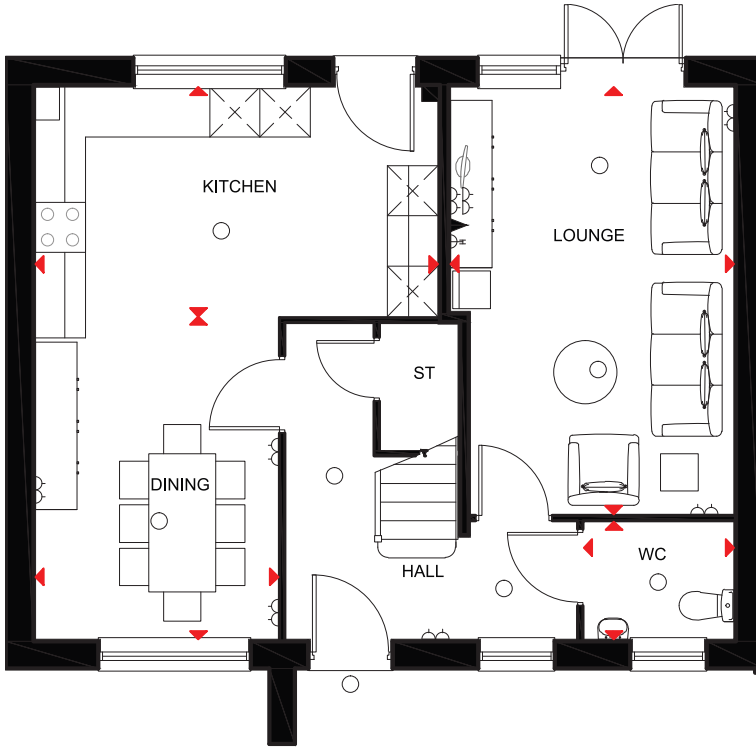


يوتوبيا للعقارات  
**UTOPIA** Properties



# Caldecotte

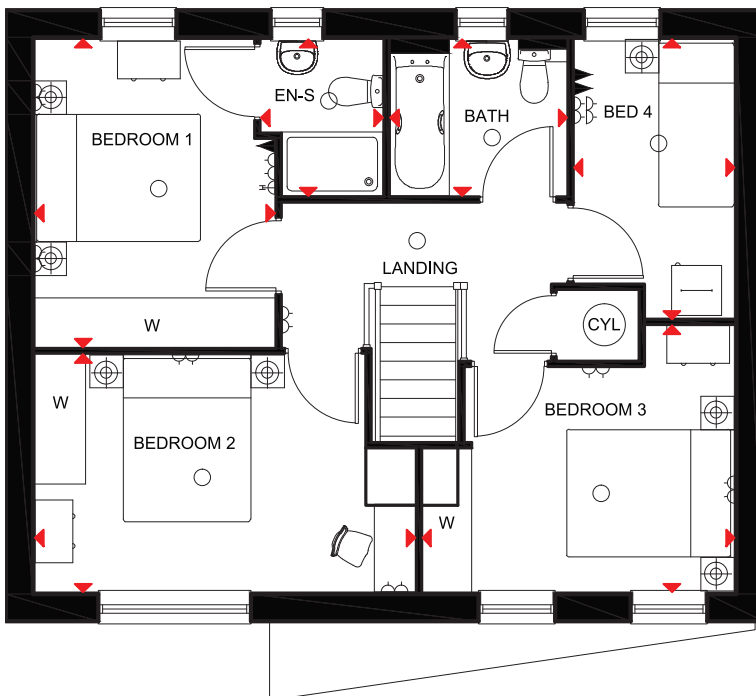
## 4 bedroom house



### Ground Floor

Lounge	5106 x 3391 mm	16'9" x 11'1"
Kitchen	4809 x 2742 mm	15'9" x 9'0"
Dining	3858 x 2904 mm	12'7" x 9'6"
W.C	1796 x 1406 mm	5'10" x 4'7"

(Approximate dimensions)



### First Floor

Bedroom 1	3675 x 2862 mm	12'0" x 9'4"
Bedroom 2	4538 x 2837 mm	14'10" x 9'3"
Bedroom 3	3724 x 3181 mm	12'2" x 10'5"
Bedroom 4	3344 x 1912 mm	10'11" x 6'3"
En-suite	1869 x 1450 mm	6'1" x 4'9"
Bathroom	2106 x 1869 mm	6'10" x 6'1"

(Approximate dimensions)

<b>KEY</b>	○ Light fitting	▲ T.V. aerial socket	B Boiler	f/f Fridge/freezer space
	⊕ Electric socket	▲ Shaver socket	ST Store	◄► Dimension location
	◄ Telephone outlet point	— Radiator	wm Washing machine space	

Visit [barratthomes.co.uk](http://barratthomes.co.uk) for further information

Kuwait : Tel : +965 25757 871/ 2/ 3 - Fax : +965 25757 874 - [www.toprealestategroup.com](http://www.toprealestategroup.com)

Qatar : Tel : +974 444 33 044 / 444 33 033 - Fax : +965 443 11 180 - [www.utopiapropertiesgroup.com](http://www.utopiapropertiesgroup.com)

**IMPORTANT NOTICE:** [Computer Generated] Images are for illustrative purposes only. Individual features such as windows, brick and other materials' colours may vary, as may heating and electrical layouts. Floor plans are intended to give a general indication of the proposed floor layout only. The dimensions are accurate to within +or- 50mm. Dimensions should not be used for carpet sizes, appliance spaces or items of furniture. Please ask our sales adviser for details of the treatments specified for individual plots. [Computer Generated] Images and dimensions are not intended to form part of any contract or warranty. Furniture and landscaping is shown for illustrative purposes only.

BWM/213701/CALDECOTTE/JULY2013



# Woolstone

## 4 bedroom home



- A beautiful four bedroom family home.
- Downstairs offers an open-plan kitchen/dining area and separate lounge.
- The first floor features three double bedrooms, one with en suite, one single bedroom and a modern family bathroom.

Developer



**BARRATT**  
HOMES  
*find the one*

Agent in Kuwait



مجموعة توب العقارية  
**TOP REAL ESTATE**  
Marketing & Consultancy

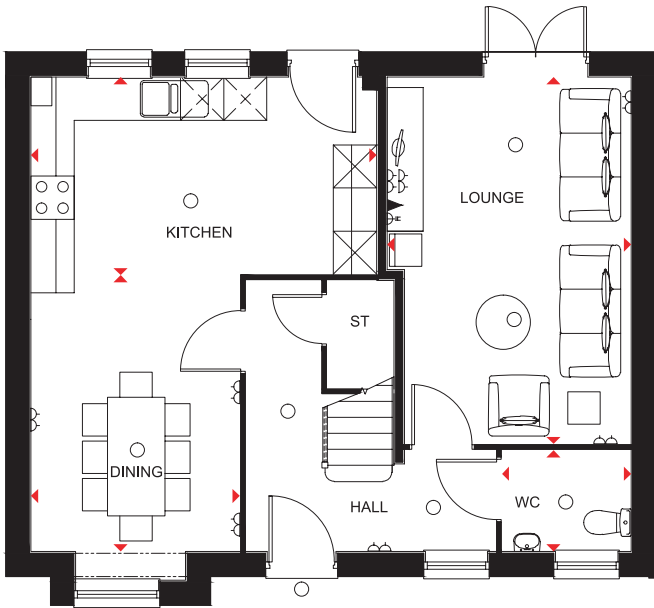
Agent in Qatar



يوتوبيا للعقارات  
**UTOPIA** Properties

# Woolstone

## 4 bedroom home

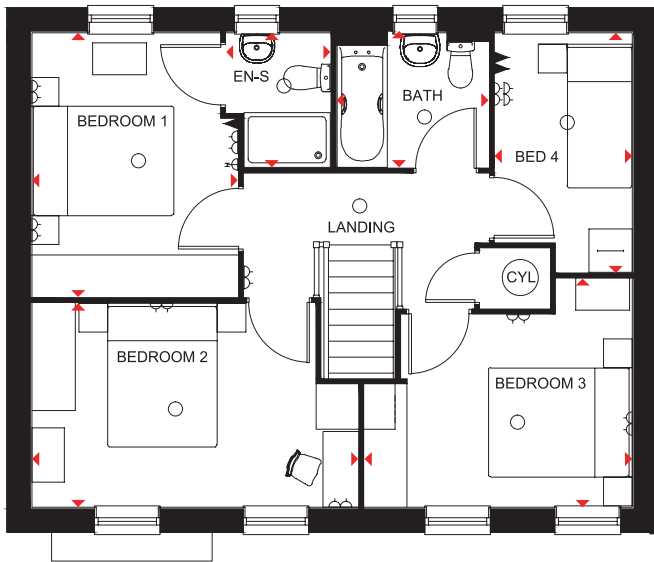


### Ground Floor

Lounge	5106 x 3391* mm	16'9" x 11'1"
Kitchen	4809 x 2755 mm	15'9" x 9'0"
Dining	3846 x 2904 mm	12'7" x 9'6"
W.C	1796 x 1406 mm	5'10" x 4'7"

(Approximate dimensions)

\* Widest Point in lounge



### First Floor

Bed 1	3675 x 2862 mm	12'0" x 9'4"
Bed 2	4538 x 2836 mm	14'10" x 9'3"
Bed 3	3724 x 3181 mm	12'2" x 10'5"
Bed 4	3344 x 1912 mm	10'11" x 6'3"
En-suite	1869 x 1450 mm	6'1" x 4'9"
Bath	2112 x 1894 mm	6'11" x 6'2"

(Approximate dimensions)

<b>KEY</b>	○ Light fitting	⊘ T.V. aerial socket	◀▶ Dimension location
	⏏ Electric socket	ST Store	
	◀ Telephone outlet point	CYL Cylinder	

Visit [barratthomes.co.uk](http://barratthomes.co.uk) for further information

Kuwait : Tel : +965 25757 871/ 2/ 3 - Fax : +965 25757 874 - [www.toprealestategroup.com](http://www.toprealestategroup.com)

Qatar : Tel : +974 444 33 044 / 444 33 033 - Fax : +965 443 11 180 - [www.utopiapropertiesgroup.com](http://www.utopiapropertiesgroup.com)

**IMPORTANT NOTICE:** [Computer Generated] Images are for illustrative purposes only. Individual features such as windows, brick and other materials' colours may vary, as may heating and electrical layouts. Floor plans are intended to give a general indication of the proposed floor layout only. The dimensions are accurate to within +or- 50mm. Dimensions should not be used for carpet sizes, appliance spaces or items of furniture. Please ask our sales adviser for details of the treatments specified for individual plots. [Computer Generated] Images and dimensions are not intended to form part of any contract or warranty. Furniture and landscaping is shown for illustrative purposes only.

XXXX 00XX\_SP213715

# Winslow

## 4 bedroom house



We operate a policy of continuous product development and individual features and elevational treatments are subject to change since this computer generated image was produced. Please ensure you check details with the sales adviser of your particular plot.

- A beautiful three story, four bedroom family home
- The ground floor features an open-plan lounge/dining area and separate modern kitchen
- The first floor offers one double bedroom, two single bedrooms and modern family bathroom
- The master suite is on the second floor with an en suite and dressing area

Developer



**BARRATT**  
HOMES  
*find the one*

Agent in Kuwait



مجموعة توب العقارية  
**TOP REAL ESTATE**  
Marketing & Consultancy

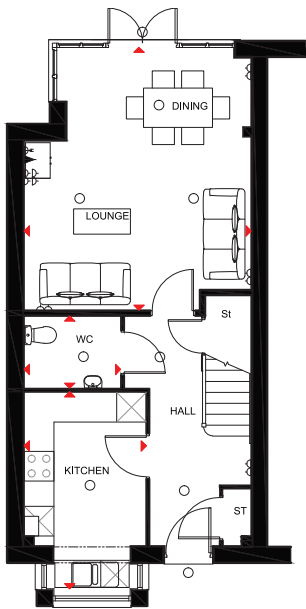
Agent in Qatar



يوتوبيا للعقارات  
**UTOPIA** Properties

# Winslow

## 4 bedroom house

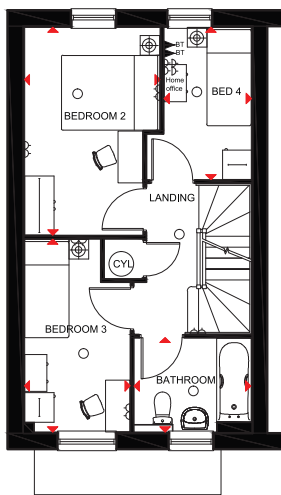


### Ground Floor

Lounge/ Dining	5342* x 4610 mm	17'6" x 15'1"
Kitchen	4003* x 2478 mm	13'1" x 8'1"
W.C	1956 x 1462 mm	6'5" x 4'9"

(Approximate dimensions)

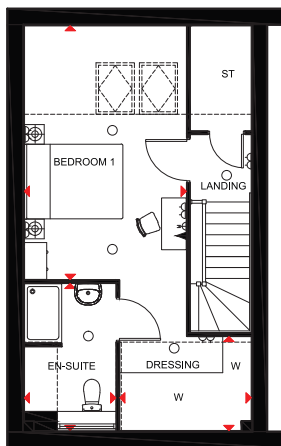
\* Widest Point



### First Floor

Bedroom 2	4222 x 2752 mm	13'10" x 9'0"
Bedroom 4	3095 x 1769 mm	10'1" x 5'9"
Bedroom 3	3917 x 2144 mm	12'10" x 7'0"
Bathroom	2390 x 1919 mm	7'10" x 6'3"

(Approximate dimensions)



### Second Floor

Bedroom 1	5155 x 3289 mm	16'11" x 10'9"
Dressing	2666** x 1906** mm	8'9" x 6'3"
En-Suite	2986 x 1855 mm	9'9" x 6'1"

(Approximate dimensions)

\*\* Reduced Head Height

\* window features to end plots only

<b>KEY</b>	○ Light fitting	⚡ T.V. aerial socket	B Boiler	wm Washing machine space	◀▶ Dimension location
	⚡ Electric socket	⚡ Shaver socket	ST Store	f/f Fridge/freezer space	
	◀ Telephone outlet point	— Radiator	CYL Cylinder	dw Dishwasher space	

Visit [barratthomes.co.uk](http://barratthomes.co.uk) for further information

Kuwait : Tel : +965 25757 871/ 2/ 3 - Fax : +965 25757 874 - [www.toprealestategroup.com](http://www.toprealestategroup.com)

Qatar : Tel : +974 444 33 044 / 444 33 033 - Fax : +965 443 11 180 - [www.utopiapropertiesgroup.com](http://www.utopiapropertiesgroup.com)

**IMPORTANT NOTICE:** [Computer Generated] Images are for illustrative purposes only. Individual features such as windows, brick and other materials' colours may vary, as may heating and electrical layouts. Floor plans are intended to give a general indication of the proposed floor layout only. The dimensions are accurate to within +or- 50mm. Dimensions should not be used for carpet sizes, appliance spaces or items of furniture. Please ask our sales adviser for details of the treatments specified for individual plots. [Computer Generated] Images and dimensions are not intended to form part of any contract or warranty. Furniture and landscaping is shown for illustrative purposes only.

BWM/213701/CALDECOTTE/JULY2013



# Willen

## 3 bedroom house



We operate a policy of continuous product development and individual features and elevational treatments are subject to change since this computer generated image was produced. Please ensure you check details with the sales adviser of your particular plot.

- A stylish three bedroom family home.
- The ground floor offers an open-plan kitchen/dining area and separate lounge with large bay window.
- The first floor features two double bedrooms, one with en suite, single bedroom and modern family bathroom.

Developer



**BARRATT**  
HOMES  
*find the one*

Agent in Kuwait



مجموعة توب العقارية  
**TOP REAL ESTATE**  
Marketing & Consultancy

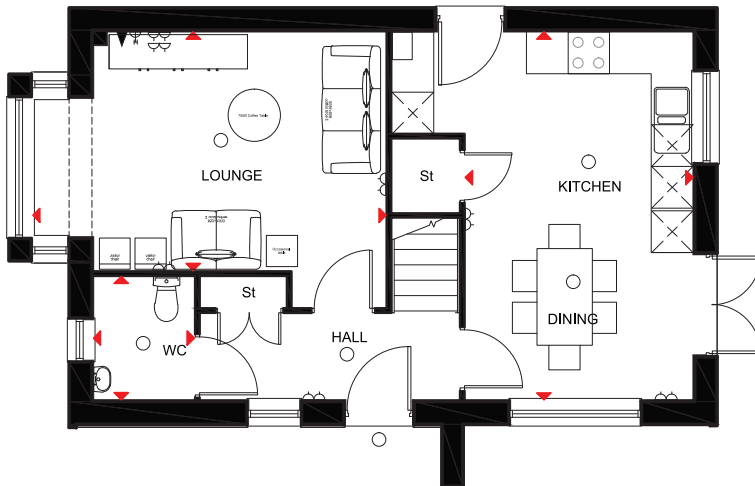
Agent in Qatar



يوتوبيا للعقارات  
**UTOPIA** Properties

# Willen

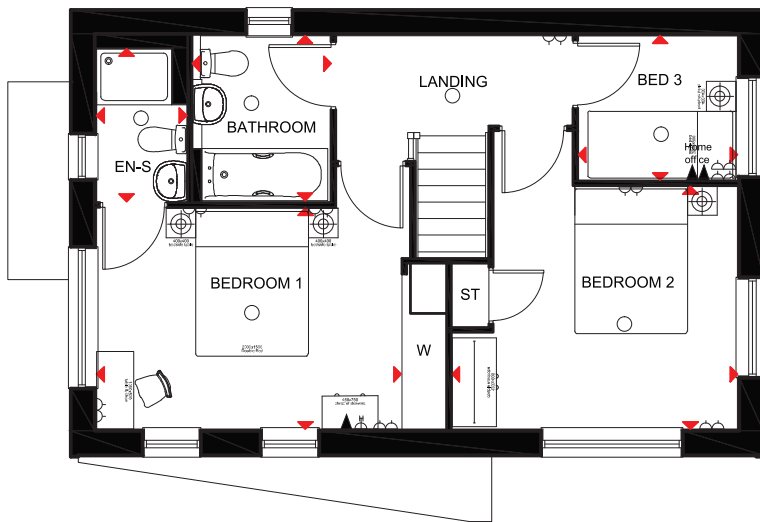
## 3 bedroom house



### Ground Floor

Lounge	5103* x 3443 mm	16'8" x 11'3"
Kitchen/Dining	5313 x 3287 mm	17'5" x 10'9"
W.C	1778 x 1456mm	5'10" x 4'9"

[Approximate dimensions]



### First Floor

Bedroom 1	4129 x 2987 mm	13'6" x 9'9"
Bedroom 2	3857 x 3276 mm	12'7" x 10'9"
Bedroom 3	2150 x 1950 mm	7'0" x 6'4"
Bathroom	2225 x 1879 mm	7'3" x 6'2"

[Approximate dimensions]

\* window features to end plots only

<b>KEY</b>	○ Light fitting	⚡ T.V. aerial socket	B Boiler	wm Washing machine space	◀▶ Dimension location
	⚡ Electric socket	⚡ Shaver socket	ST Store	f/f Fridge/freezer space	
	◀ Telephone outlet point	— Radiator	CYL Cylinder	dw Dishwasher space	

Visit [barratthomes.co.uk](http://barratthomes.co.uk) for further information

Kuwait : Tel : +965 25757 871/ 2/ 3 - Fax : +965 25757 874 - [www.toprealestategroup.com](http://www.toprealestategroup.com)

Qatar : Tel : +974 444 33 044 / 444 33 033 - Fax : +965 443 11 180 - [www.utopiapropertiesgroup.com](http://www.utopiapropertiesgroup.com)

**IMPORTANT NOTICE:** [Computer Generated] Images are for illustrative purposes only. Individual features such as windows, brick and other materials' colours may vary, as may heating and electrical layouts. Floor plans are intended to give a general indication of the proposed floor layout only. The dimensions are accurate to within +or- 50mm. Dimensions should not be used for carpet sizes, appliance spaces or items of furniture. Please ask our sales adviser for details of the treatments specified for individual plots. [Computer Generated] Images and dimensions are not intended to form part of any contract or warranty. Furniture and landscaping is shown for illustrative purposes only.

BWM/213701/CALDECOTTE/JULY2013

# St. Giles Park

Tattenhoe Park, Milton Keynes  
MK4 3GE  
Development layout



Developer



**BARRATT**  
HOMES  
*find the one*

Agent in Kuwait



مجموعة توب العقارية  
**TOP REAL ESTATE**  
Marketing & Consultancy

Agent in Qatar



يوتوبيا للعقارات  
**UTOPIA** Properties

IMPORTANT INFORMATION: This site layout is intended for illustration purposes only and may change for example in response to market demand or ground conditions. Consequently, it should be treated as general guidance and cannot be relied upon as accurately describing any of the Specified Matters prescribed by any Order made under Property Misdescriptions Act 1991. Nor do the contents constitute a contract, part of a contract or a warranty. All planting is indicative of final landscaping. Subject to planning permission. Community Building, Play Area and POS are subject to planning and may be revised. Please check with your sales adviser for final details.



# St. Giles Park

Tattenhoe Park, Milton Keynes  
MK4 3GE

## Development layout

-  Emerson 3 bedroom home
-  Horwood 3 bedroom home
-  Soulbury 3 bedroom home
-  Willen 3 bedroom home
-  Calverton 3 bedroom home
-  Caldecotte 4 bedroom home
-  Woolstone 4 bedroom home
-  Beachampton 4 bedroom home
-  Winslow 4 bedroom home
-  Sherington 4 bedroom home
-  Affordable Housing
-  SH Show Homes
-  SC Sales Centre
-  Sales Centre & Show Homes Area



Developer



Agent in Kuwait



Agent in Qatar

