

# The Chesterfield

– Three bedroom home



This impressive three bedroom home is perfect for modern family living. The ground floor boasts a comfortable lounge with bay window and a stylish kitchen which features dining and family areas and an adjoining utility room. Upstairs are two double bedrooms, with an en suite shower room to the master bedroom, a single bedroom and a family bathroom.



[dwh.co.uk](http://dwh.co.uk)

Agent in Kuwait



Agent in Qatar



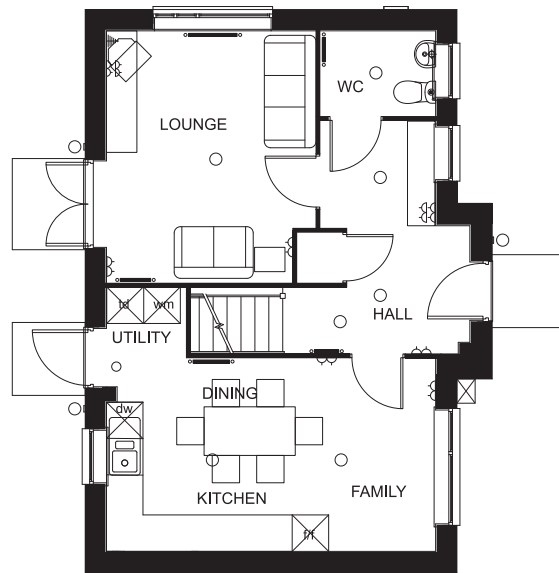
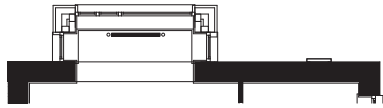
Where quality lives



David Wilson Homes

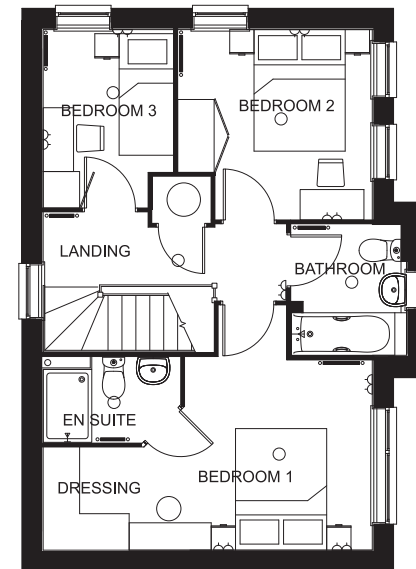
# The Chesterfield

– Three bedroom home



## Ground Floor

Kitchen/Dining	5415 x 3186mm max	179" x 105" max
Lounge	4153 x 3447mm max	137" x 113" max



## First Floor

Bedroom 1	3089 x 2856mm max	10'1" x 9'4" max
Dressing Area	2326 x 1698mm	7'7" x 5'6"
Bedroom 2	3202 x 3132mm max	10'6" x 10'3" max
Bedroom 3	2935 x 2150mm	9'7" x 7'0"

<b>KEY</b>	○	Light fitting	◀	Telephone outlet point	— —	Radiator	B	Boiler	wm	Washing machine space	td	Tumble dryer space
	◊	Electric socket	◁	T.V. aerial socket	— —	Towel radiator	fff	Fridge/freezer space	dw	Dishwasher space	◀▶	Dimension location

dwh.co.uk

Computer generated images are for illustrative purposes only and individual features often vary from one plot to another. Floor plans are indicative only to give a general indication of the proposed development and floor layout. The dimensions are accurate to within + or -50mm. Dimensions should not be used for carpet sizes, appliance spaces or items of furniture. Please ask our Sales Advisers for details of the treatments specified for individual plots. Computer generated images are for general guidance only and are not intended to form part of any contract or warranty. Furniture shown is for illustrative purposes only.

HOUSECODE / SPXXXXX/0511

# The Wroxham

– Four bedroom home



This attractive four bedroom home offers plenty of space for families. The lounge features an airy bay to the front. The spacious hallway leads through to the kitchen, boasting dining and family areas and opening onto the rear garden through French doors. Upstairs, the master bedroom enjoys an en suite shower room while another single bedroom and two double bedrooms share the family bathroom.



[dwh.co.uk](http://dwh.co.uk)

Agent in Kuwait



Agent in Qatar



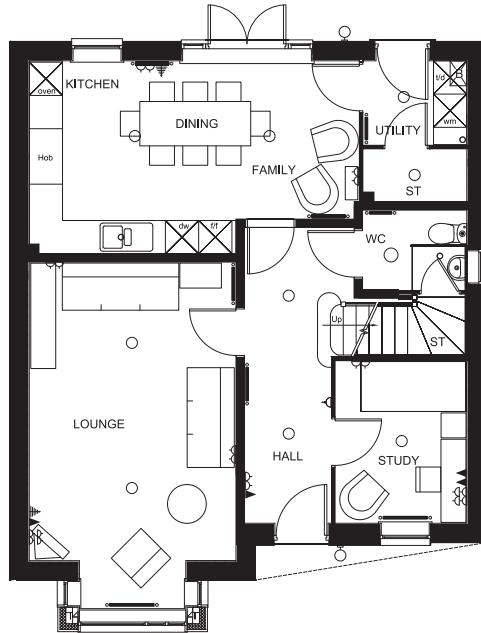
Where quality lives



David Wilson Homes

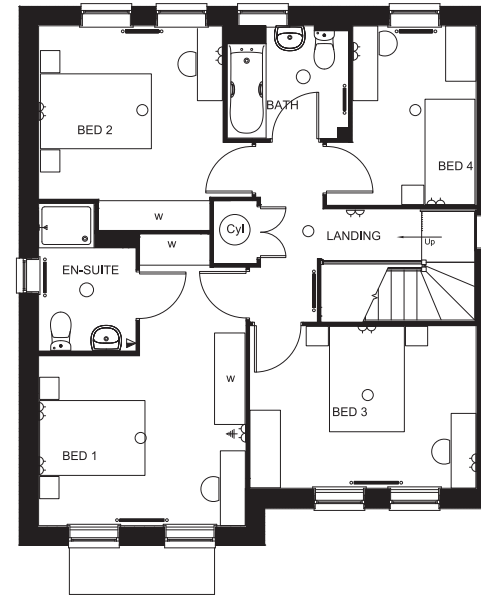
# The Wroxham

– Four bedroom home



## Ground Floor

Kitchen/Dining	5953 x 3480mm max	19'6" x 11'5" max
Lounge	5385 x 3728mm	17'8" x 12'2"
Study	2932 x 1524mm	9'7" x 5'0"



## First Floor

Bedroom 1	3753 x 3064mm	12'3" x 10'0"
Bedroom 2	3327 x 3128mm	10'10" x 10'3"
Bedroom 3	4086 x 2932mm	13'4" x 9'7"
Bedroom 4	3238 x 2237mm	10'7" x 7'4"

<b>KEY</b>	○ Light fitting	◀ Telephone outlet point
	◻ Electric socket	⚡ T.V. aerial socket

dwh.co.uk

# The Staunton

– Four bedroom home



The interior of this generous family home more than lives up to the impressive front aspect. An airy hall leads to the lounge and a stylish rear kitchen with family areas. This space opens directly out onto the rear garden, as does the adjoining dining room. Downstairs also boasts a separate study. Upstairs, the four double bedrooms provide relaxing retreats. The master bedroom comes with a full en suite and fitted wardrobes and there is a further bathroom with separate shower for the rest of the family to enjoy.



[dwh.co.uk](http://dwh.co.uk)

Agent in Kuwait

Agent in Qatar



Where quality lives

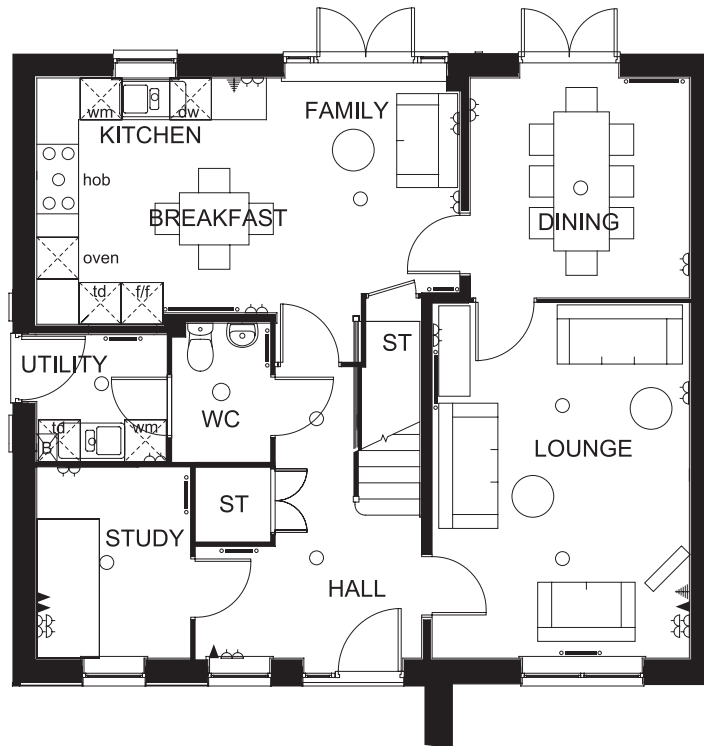


David Wilson Homes



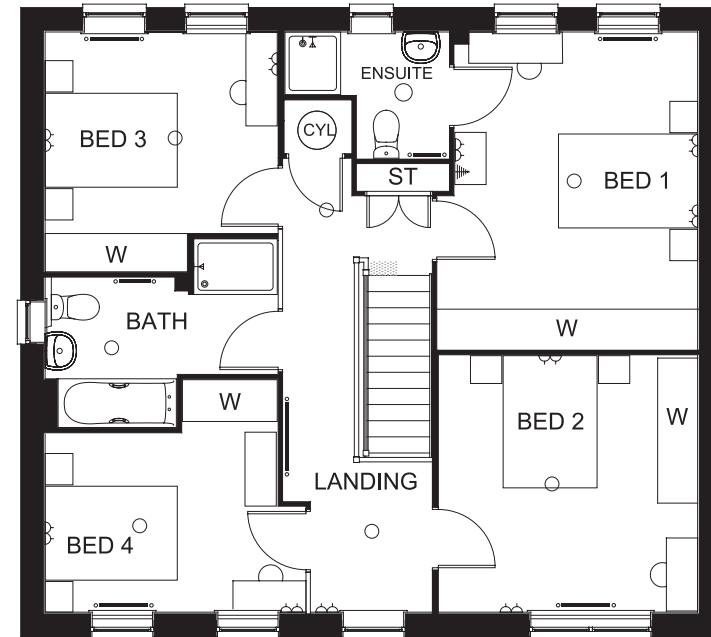
# The Staunton

– Four bedroom home



## Ground Floor

Kitchen/Family	6080 x 3540mm max	19'11" x 11'7" max
Dining	3150 x 3162mm	10'4" x 10'4"
Lounge	5115 x 3743mm	16'9" x 12'3"
Study	2750 x 2212mm	9'0" x 7'3"



## First Floor

Bedroom 1	4577mm x 3750mm	15'0" x 12'3"
Bedroom 2	3728mm x 3700mm max	12'2" x 12'1"
Bedroom 3	3350mm x 2267mm	10'11" x 7'5"
Bedroom 4	3750mm x 2579mm	12'3" x 8'5"

<b>KEY</b>	○ Light fitting	◀ Telephone outlet point	— Radiator	B Boiler	CYL Cylinder	wm Washing machine space	td Tumble dryer space
	◻ Electric socket	◁ T.V. aerial socket	— Towel radiator	ST Store	f/f Fridge/freezer space	dw Dishwasher space	◄► Dimension location

dwh.co.uk

Computer generated images are for illustrative purposes only and individual features often vary from one plot to another. Floor plans are indicative only to give a general indication of the proposed development and floor layout. The dimensions are accurate to within + or -50mm. Dimensions should not be used for carpet sizes, appliance spaces or items of furniture. Please ask our Sales Advisers for details of the treatments specified for individual plots. Computer generated images are for general guidance only and are not intended to form part of any contract or warranty. Furniture shown is for illustrative purposes only.

SP211891/0713

# The Salisbury

– Four bedroom home



A beautiful four bedroom home offering free flowing living space for your growing family. The impressive entrance hall leads to the kitchen with dining and utility areas and a glazed bay that opens onto the rear garden. A bay fronted lounge is also beautifully presented on the ground floor too. Upstairs, the master bedroom with en suite makes a relaxing haven, while two further double bedrooms, a single bedroom and a family bathroom complete this home.



[dwh.co.uk](http://dwh.co.uk)

Agent in Kuwait

  
مجموعة توب العقارية  
TOP REAL ESTATE  
Marketing & Consultancy

Agent in Qatar

  
يوتوبيا للعقارات  
UTOPIA Properties

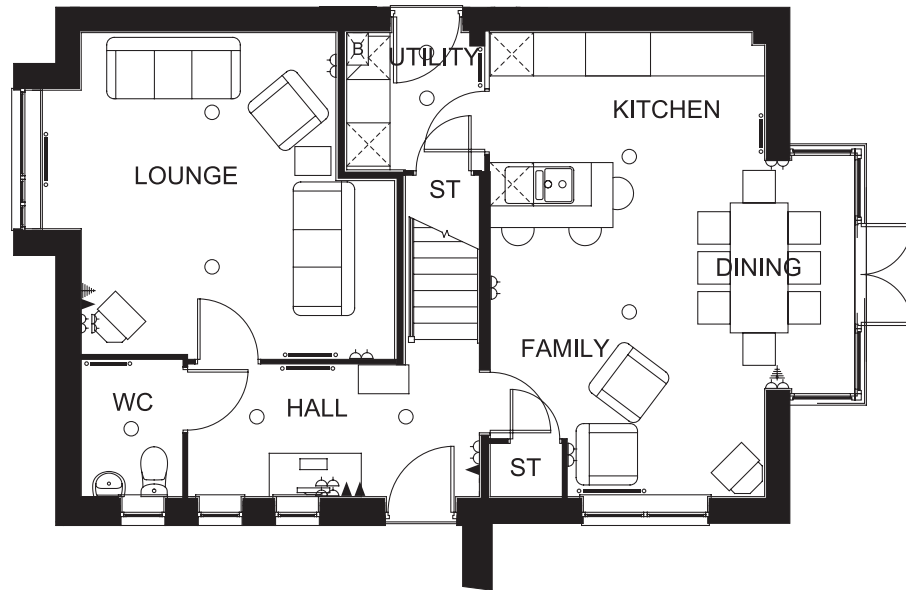
Where quality lives



David Wilson Homes

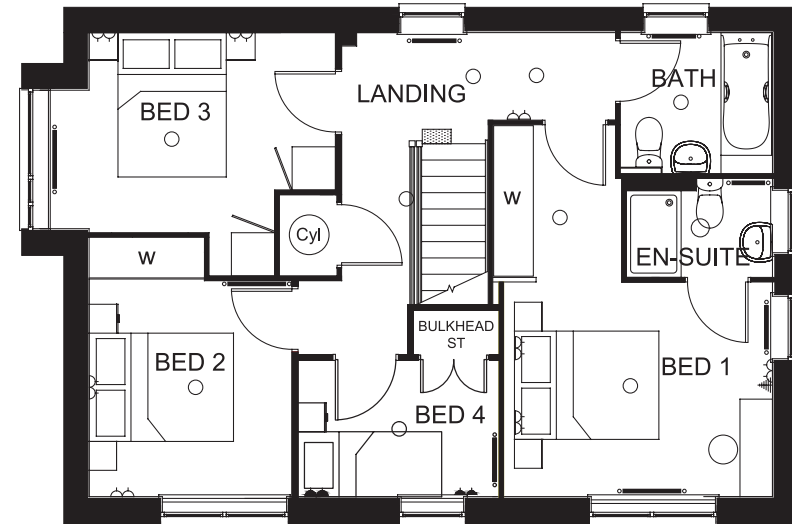
# The Salisbury

– Four bedroom home



## Ground Floor

Kitchen/Dining	6425 x 5050mm max	21'0" x 16'6" max
Lounge	4459 x 4340mm max	14'7" x 14'2"



## First Floor

Bedroom 1	3724 x 2963mm	12'2" x 9'8"
Bedroom 2	2992 x 2778mm	9'9" x 9'1"
Bedroom 3	3412 x 2772mm max	11'2" x 9'1"
Bedroom 4	2815 x 1900mm	9'2" x 6'2"

<b>KEY</b>	○ Light fitting	◀ Telephone outlet point
	⏏ Electric socket	⚡ T.V. aerial socket

dwh.co.uk



# The Robinson

– Three bedroom home



This delightful 2½ storey, three bedroom family home boasts a modern, well appointed kitchen and a generous lounge with dining area that opens out into the rear garden. On the first floor is a comfortable double bedroom, a single bedroom and a family bathroom. The second floor boasts the impressive master bedroom and its en suite shower room.



dwh.co.uk

Agent in Kuwait

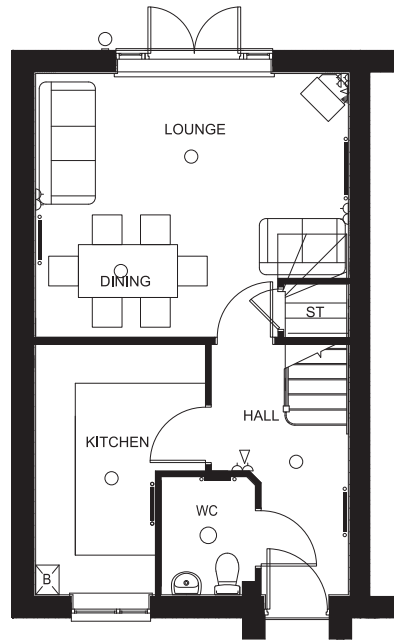
Agent in Qatar



Where quality lives   
David Wilson Homes

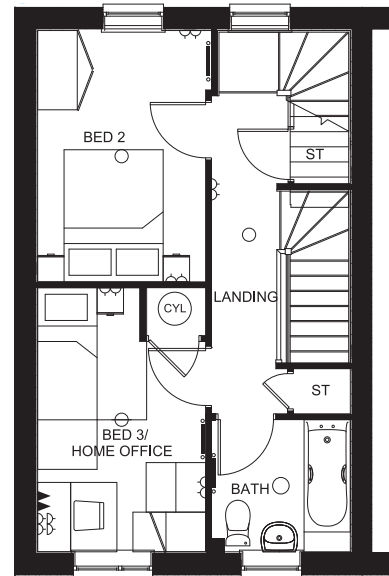
# The Robinson

– Three bedroom home



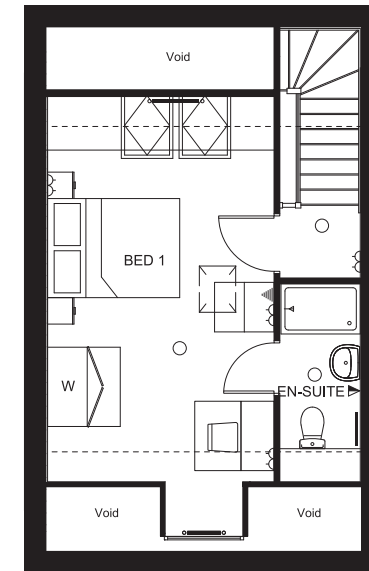
## Ground Floor

Kitchen	3802 x 1825mm	12'5" x 5'11"
Lounge/Dining	4833 x 4003mm	15'10" x 13'1"



## First Floor

Bedroom 2	3817 x 2644mm	12'6" x 8'8"
Bedroom 3	4015 x 2555mm max	13'2" x 8'4"



## Second Floor

Bedroom 1	4925 x 3440mm max	16'1" x 11'3" max
-----------	-------------------	-------------------

<b>KEY</b>	○ Light fitting	◀ Telephone outlet point	— Radiator
	◻ Electric socket	⦿ T.V. aerial socket	W Wardrobe space

dwh.co.uk

Computer generated images are for illustrative purposes only and individual features often vary from one plot to another. Floor plans are indicative only to give a general indication of the proposed development and floor layout. The dimensions are accurate to within + or -50mm. Dimensions should not be used for carpet sizes, appliance spaces or items of furniture. Please ask our Sales Advisers for details of the treatments specified for individual plots. Computer generated images are for general guidance only and are not intended to form part of any contract or warranty. Furniture shown is for illustrative purposes only. Computer generated image and photographs are for general guidance only and are not intended to form part of any contract or warranty.

SP211898/0613

# Pavely

– 3 bedroom detached home



This four bedroom family home has been thoughtfully designed throughout, from the front window that allows natural light into the open-plan dining room and kitchen to the sitting room that opens onto the rear garden via French doors. Upstairs boasts two double bedrooms; the master with its own en suite shower room, two single bedrooms and a family bathroom.



[dwh.co.uk](http://dwh.co.uk)

Agent in Kuwait

  
مجموعة توب العقارية  
TOP REAL ESTATE  
Marketing & Consultancy

Agent in Qatar

  
يوتوبيا للعقارات  
UTOPIA Properties

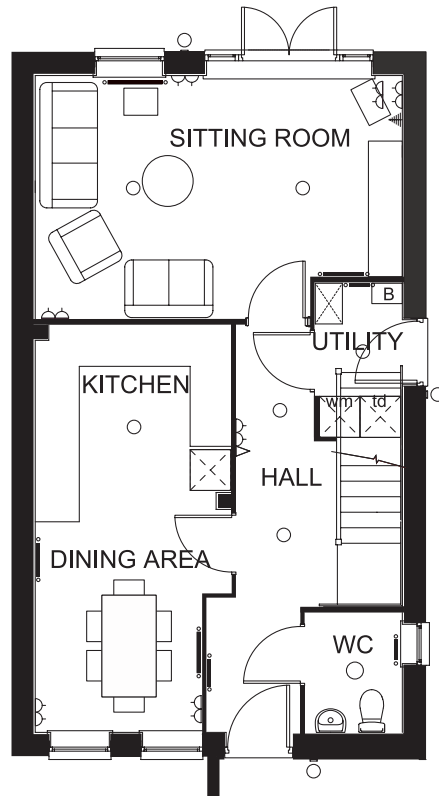
Where quality lives



David Wilson Homes

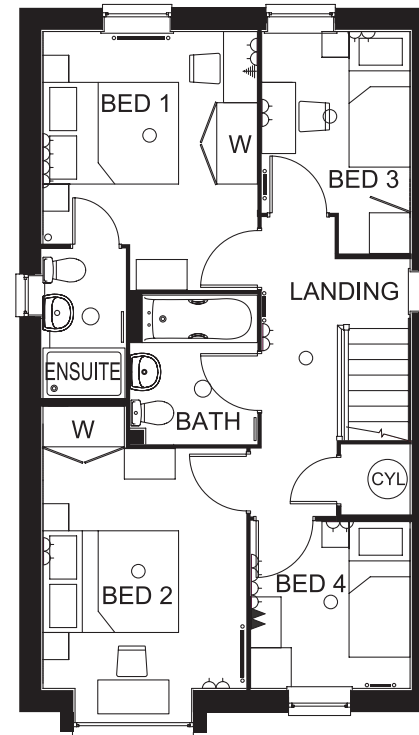
# Pavely

– 3 bedroom detached home



## Ground Floor

Kitchen/Dining	6013 x 2898mm max	19'8" x 9'6" max
Lounge	5415 x 3592mm max	17'9" x 11'9" max



## First Floor

Bedroom 1	3813 x 3163mm max	12'6" x 10'4" max
Bedroom 2	3538 x 2999mm	11'7" x 9'10"
Bedroom 3	3274 x 2189mm max	10'8" 7'2"
Bedroom 4	2474 x 2353mm	8'1" x 7'8"

<b>KEY</b>	○	Light fitting	◀	Telephone outlet point	—○—	Radiator	B	Boiler	CYL	Cylinder	wm	Washing machine space	td	Tumble dryer space
	◻	Electric socket	⚡	T.V. aerial socket	—■—	Towel radiator	ST	Store	f/f	Fridge/freezer space	dw	Dishwasher space		

[dwh.co.uk](http://dwh.co.uk)

Computer generated images are for illustrative purposes only and individual features often vary from one plot to another. Floor plans are indicative only to give a general indication of the proposed development and floor layout. The dimensions are accurate to within + or -50mm. Dimensions should not be used for carpet sizes, appliance spaces or items of furniture. Please ask our Sales Advisers for details of the treatments specified for individual plots. Computer generated images are for general guidance only and are not intended to form part of any contract or warranty. Furniture shown is for illustrative purposes only.

SP214114/0713

# Midford

– 4 bedroom detached home



This attractive four bedroom home offers plenty of space for families. The airy lounge leads to the kitchen, boasting dining and family areas and opening onto the rear garden through French doors. Upstairs, the master bedroom enjoys an en suite shower room while another double bedroom and two single bedrooms share the family bathroom.



[dwh.co.uk](http://dwh.co.uk)

Agent in Kuwait



Agent in Qatar



*Where quality lives*

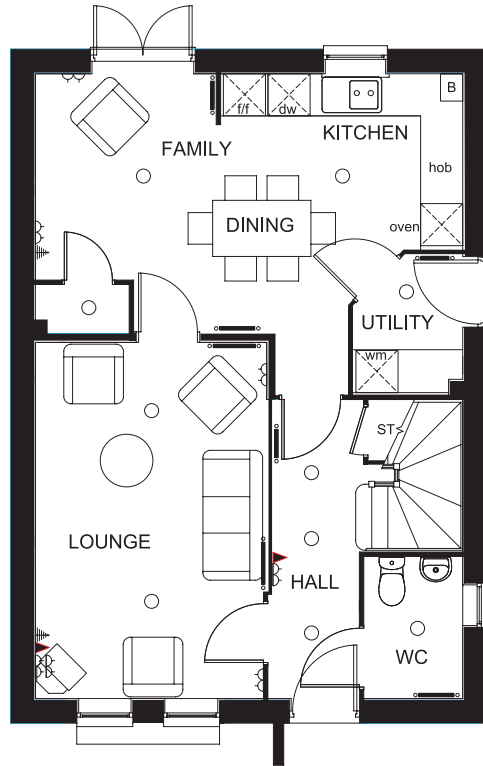


**David Wilson Homes**



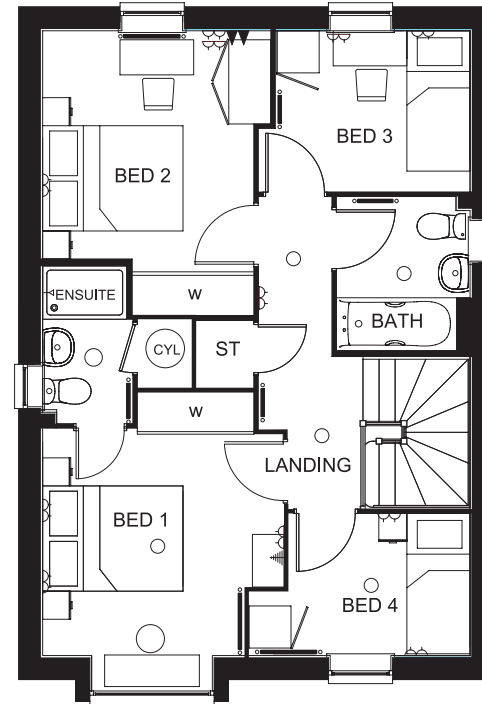
# Midford

– 4 bedroom detached home



## Ground Floor

Kitchen/Dining	6090 x 3678mm max	19'11" x 12'0" max
Lounge	5075 x 3250mm	16'7" x 10'7"



## First Floor

Bedroom 1	3204 x 3439mm max	10'6" x 11'3"
Bedroom 2	3253 x 3252mm	10'8" x 10'8"
Bedroom 3	2775 x 2299mm	9'1" x 7'6"
Bedroom 4	2588 x 2025mm	8'5" x 6'7"

<b>KEY</b>	○ Light fitting	◀ Telephone outlet point	— Radiator	ST Store	f/f Fridge/freezer space	dw Dishwasher space	W Wardrobe
	◻ Electric socket	⚡ T.V. aerial socket	B Boiler	CYL Cylinder	wm Washing machine space	td Tumble dryer space	

[dwh.co.uk](http://dwh.co.uk)

# Lancaster

– 5 bedroom detached home



With flowing living spaces set over three floors, combined with a consistently stylish design, the Lancaster is a beautiful family home. The bright and airy ground floor kitchen features French doors to the rear and a utility room. There is a large separate dining room to the front. The lounge also boasts its own set of French doors and a bay window. A separate study is located at the front of the house. The first floor offers a master bedroom with full en suite, three further double bedrooms and a family bathroom. A further double bedroom with en suite and a cosy den are located on the second floor.



[dwh.co.uk](http://dwh.co.uk)

Agent in Kuwait

**توب**  
مجموعة توب العقارية  
TOP REAL ESTATE  
Marketing & Consultancy

Agent in Qatar

**يوتوبيا** للعقارات  
UTOPIA Properties

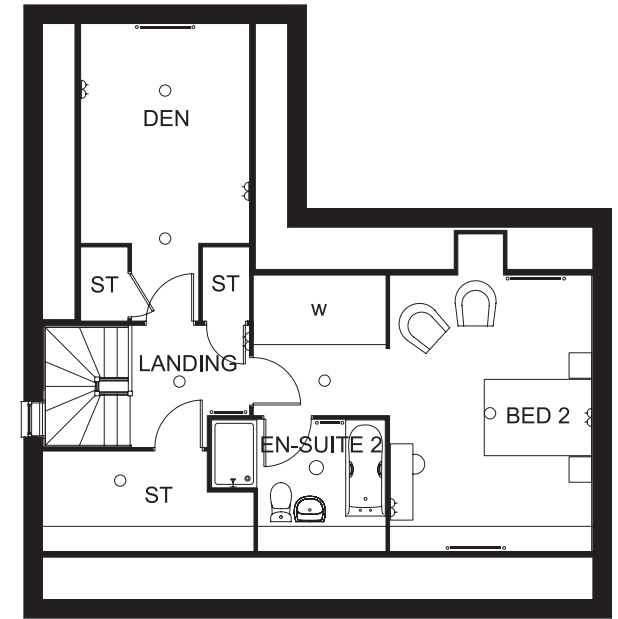
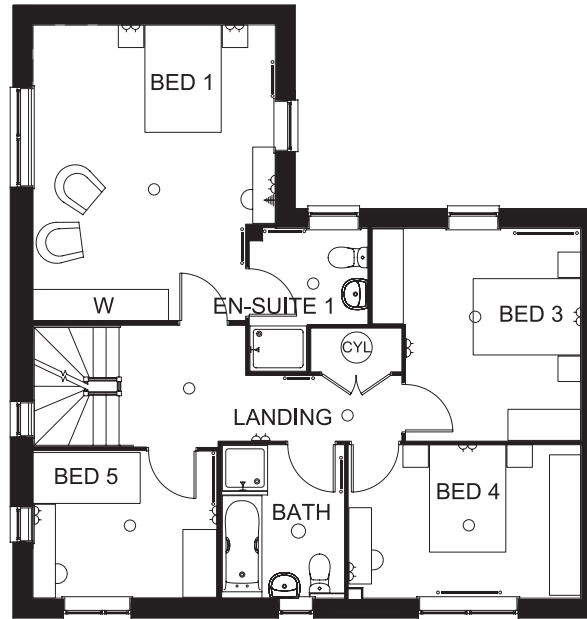
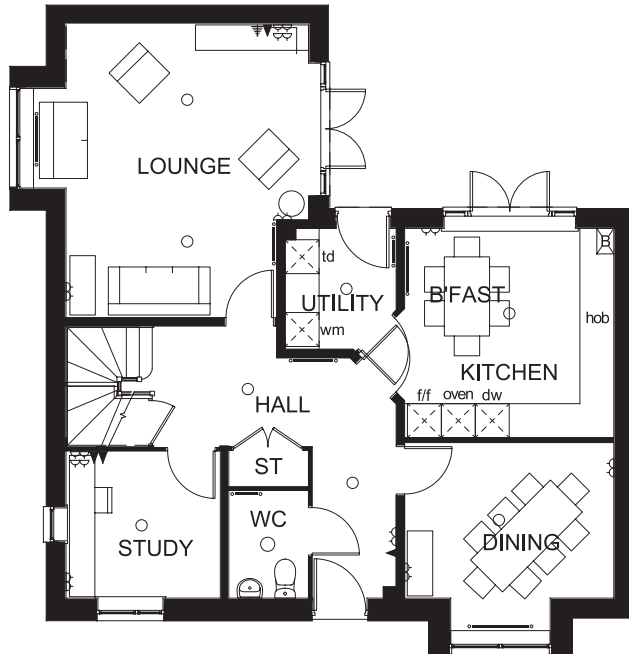
Where quality lives



David Wilson Homes

# Lancaster

– 5 bedroom detached home



## Ground Floor

Kitchen/Breakfast	3700 x 3713mm	12'1" x 12'2"
Dining Room	3700 x 2764mm	12'1" x 9'0"
Lounge	5177 x 4290mm max	16'11" x 14'0"
Study	2730 x 2602mm	8'11" x 8'6"
Utility	2138 x 1963mm	7'0" x 6'5"

## First Floor

Bedroom 1	5229 x 4290mm	17'1" x 14'0"
Bedroom 3	3098 x 3763mm	10'1" x 12'4"
Bedroom 4	4112 x 2714mm	13'5" x 8'10"
Bedroom 5	3255 x 2602mm	10'8" x 8'6"

## Second Floor

Bedroom 2	4000 x 3575mm max	13'1" x 11'8"
Den	3864 x 2402mm	12'8" x 7'10"

<b>KEY</b>	W	wardrobe space	⏏	Electric fittings	📡	TV aerial socket	CYL	Cylinder	f/f	Fridge freezer space	td	Tumble dryer space
	B	Boiler	○	Light fittings	☎	Telephone outlet point	dw	Dishwasher space	w/m	Washing machine space		

dwh.co.uk

Computer generated images are for illustrative purposes only and individual features often vary from one plot to another. Floor plans are indicative only to give a general indication of the proposed development and floor layout. The dimensions are accurate to within + or -50mm. Dimensions should not be used for carpet sizes, appliance spaces or items of furniture. Please ask our Sales Advisers for details of the treatments specified for individual plots. Computer generated images are for general guidance only and are not intended to form part of any contract or warranty. Furniture shown is for illustrative purposes only.

SP214112/0713

# The Hartford

– Five bedroom home



This impressive 2½ storey, five bedroom home offers plenty of room for the whole family. Space and light are key features, with the openplan kitchen and dining room incorporating a utility room. This same generosity can be seen in the dual aspect lounge, which opens onto the rear garden via French doors. Downstairs also features a separate study. On the first floor are three beautifully presented bedrooms, a double and two singles, the master with dressing area and en suite shower room, and a family bathroom. The second floor offers a further single bedroom, twin bedroom and a shower room.



dwh.co.uk

Agent in Kuwait



Agent in Qatar



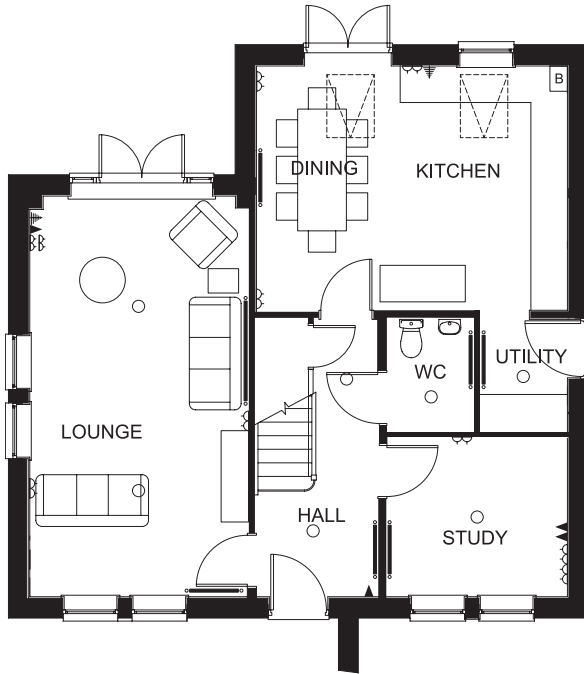
Where quality lives



David Wilson Homes

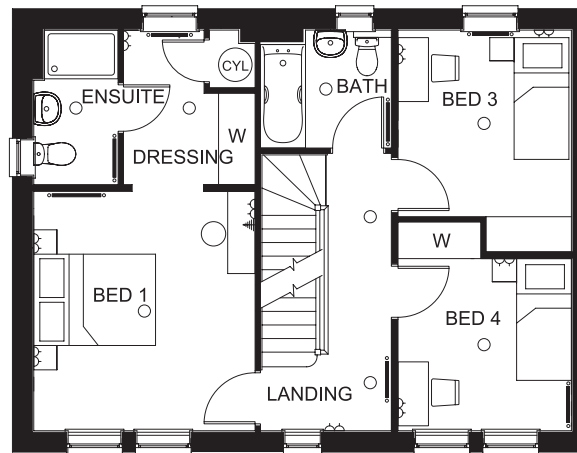
# The Hartford (Type L)

– Five bedroom home



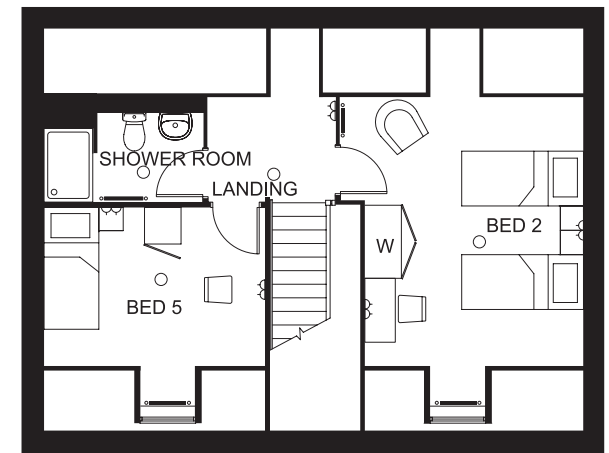
## Ground Floor

Kitchen/Dining	5107 x 4012mm	169" x 13'1"
Lounge	6580 x 3573mm	21'7" x 11'8"
Study	3735 x 2617mm	12'3" x 8'7"



## First Floor

Bedroom 1	3647 x 3674mm	11'11" x 12'0"
Bedroom 3	3078 x 2860mm	10'1" x 9'4"
Bedroom 4	2860 x 2840mm	9'4" x 9'3"



## Second Floor

Bedroom 2	4206 x 3578mm	13'9" x 11'8"
Bedroom 5	3647 x 2492mm	11'11" x 8'2"

<b>KEY</b>	○ Light fitting	◀ Telephone outlet point	—○ Radiator	B Boiler	CYL Cylinder
	⏏ Electric socket	📡 T.V. aerial socket	— Towel radiator	ST Store	W Wardrobe space

dwh.co.uk

Computer generated images are for illustrative purposes only and individual features often vary from one plot to another. Floor plans are indicative only to give a general indication of the proposed development and floor layout. The dimensions are accurate to within + or -50mm. Dimensions should not be used for carpet sizes, appliance spaces or items of furniture. Please ask our Sales Advisers for details of the treatments specified for individual plots. Computer generated images are for general guidance only and are not intended to form part of any contract or warranty. Furniture shown is for illustrative purposes only.

SP214756/0813



# Hartford

– Five bedroom detached home



This five bedroom family home has been thoughtfully designed throughout. The entrance hall leads to a light and spacious open plan kitchen and dining room with French doors opening out onto the rear garden. The house also benefits from a generous lounge with triple aspect windows, this room also has French doors opening onto the rear garden. The first floor provides the master bedroom with ensuite and dressing area, plus two further single bedrooms that share the family bathroom. On the second floor you will find two additional bedrooms and a separate shower room.



[dwh.co.uk](http://dwh.co.uk)

Agent in Kuwait

  
مجموعة توب العقارية  
TOP REAL ESTATE  
Marketing & Consultancy

Agent in Qatar

  
يوتوبيا للعقارات  
UTOPIA Properties

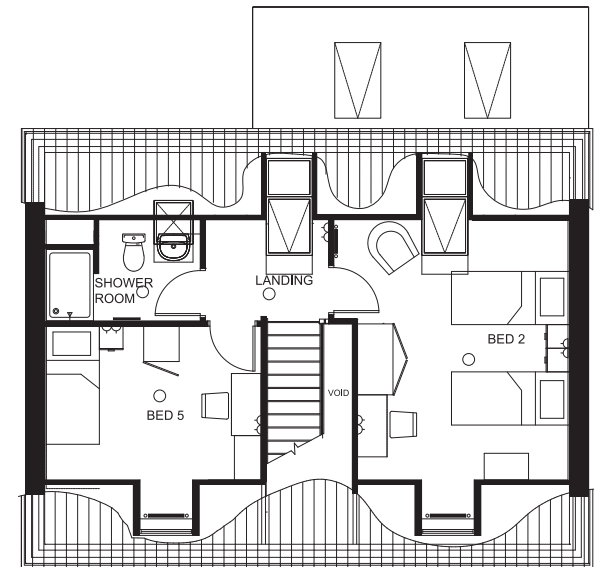
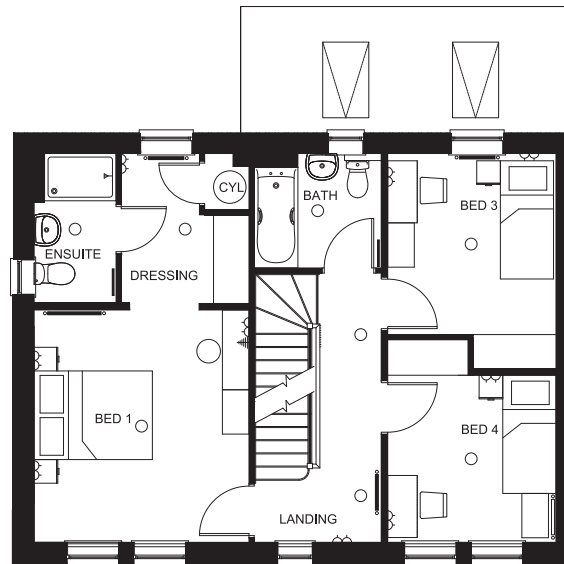
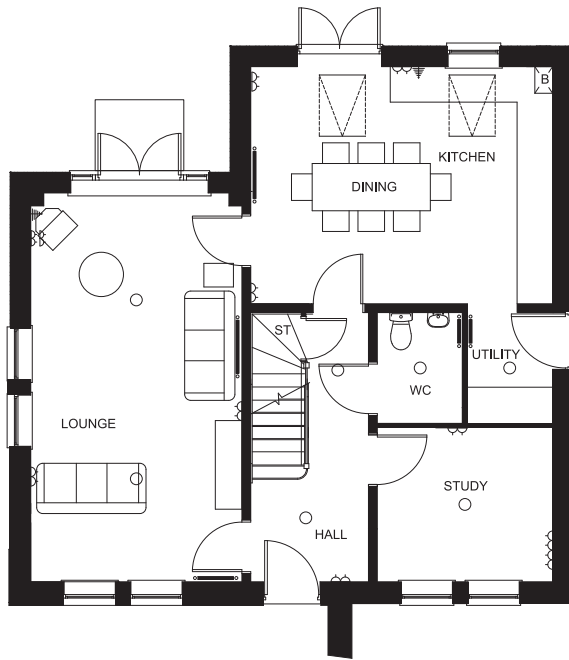
Where quality lives



David Wilson Homes

# Hartford

– Five bedroom detached home



## Ground Floor

Kitchen/Dining	3700 x 3713mm	12'1" x 12'2"
Dining	3700 x 2764mm	12'1" x 9'0"
Lounge	5177 x 4290mm	16'11" x 14'0"
Study	2730 x 2602mm	8'11" x 8'6"
Utility	2138 x 1963mm	7'0" x 6'5"

## First Floor

Bedroom 1	5229 x 4290mm	17'1" x 14'0"
Bedroom 3	3098 x 3763mm	10'1" x 12'4"
Bedroom 4	4112 x 2714mm	13'5" x 8'10"
Bedroom 5	3255 x 2602mm	10'8" x 8'6"

## Second Floor

Bedroom 2	4000 x 3575mm	13'1" x 11'8"
Den	3864 x 2402mm	12'8" x 7'10"

<b>KEY</b>	○ Light fitting	◀ Telephone outlet point	— Radiator	B Boiler	CYL Cylinder
	◻ Electric socket	⦿ T.V. aerial socket	— Towel radiator	ST Store	

dwh.co.uk

Computer generated images are for illustrative purposes only and individual features often vary from one plot to another. Floor plans are indicative only to give a general indication of the proposed development and floor layout. The dimensions are accurate to within + or -50mm. Dimensions should not be used for carpet sizes, appliance spaces or items of furniture. Please ask our Sales Advisers for details of the treatments specified for individual plots. Computer generated images are for general guidance only and are not intended to form part of any contract or warranty. Furniture shown is for illustrative purposes only.

SP215111/0813

# The Harley

– 4 bedroom detached home



This spectacular 2½ storey four bedroom home is airy throughout. On the ground floor, the lounge features French doors to the garden. There is a lovely open plan kitchen/dining room. This first floor benefits from a double bedroom, single bedroom and bathroom. The master bedroom is located on the second floor along with a further double bedroom.



[dwh.co.uk](http://dwh.co.uk)

Agent in Kuwait

  
مجموعة توب العقارية  
TOP REAL ESTATE  
Marketing & Consultancy

Agent in Qatar

  
يوتوبيا للعقارات  
UTOPIA Properties

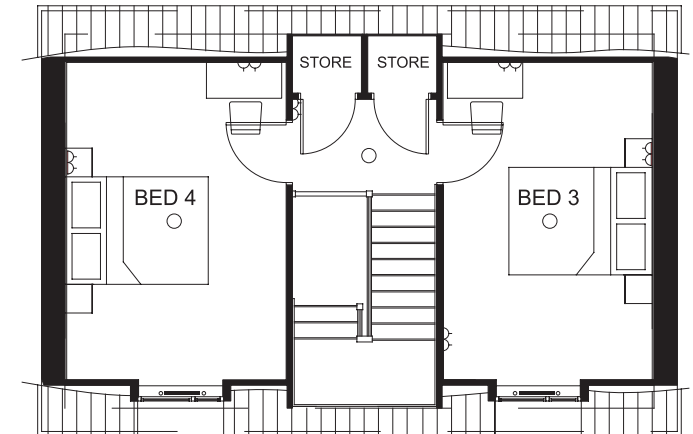
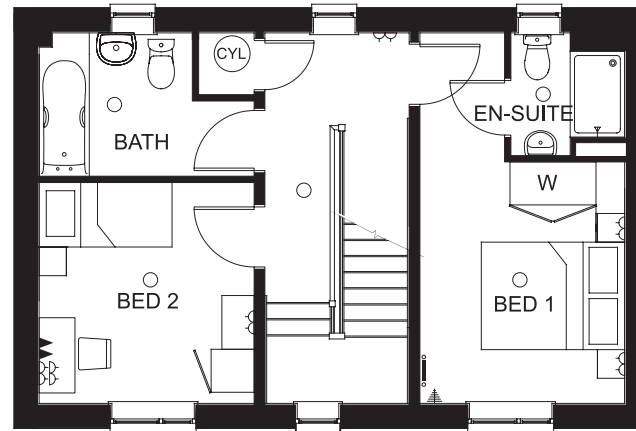
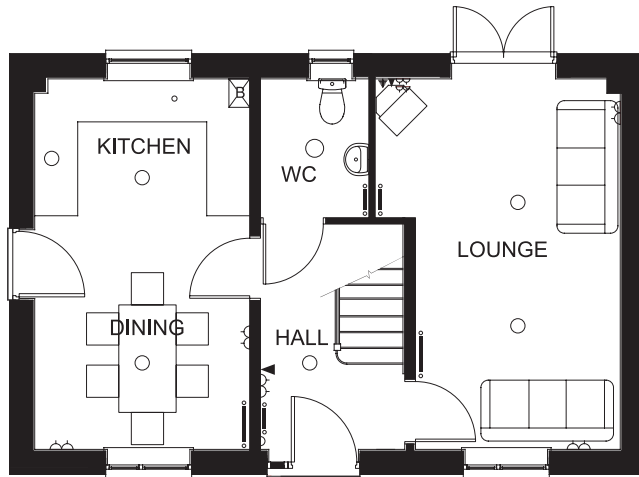
Where quality lives



David Wilson Homes

# The Harley

– 4 bedroom detached home



## Ground Floor

Kitchen/Dining	5170 x 3000mm	16'11" x 9'10"
Lounge	5170 x 3432mm max	16'11" x 11'3"

## First Floor

Bedroom 1	3382 x 2857mm	11'1" x 9'4"
Bedroom 2	3000 x 3095mm	9'10" x 10'1"

## Second Floor

Bedroom 3	3675 x 2932mm	12'0" x 9'7"
Bedroom 4	3675 x 3074mm	12'0" x 10'1"

<b>KEY</b>	○	Light fitting	◀	Telephone outlet point	—○—	Radiator	B	Boiler	CYL	Cylinder
	◊	Electric socket	◁	T.V. aerial socket	—■—	Towel radiator	wd	Wardrobe		

dwh.co.uk

Computer generated images are for illustrative purposes only and individual features often vary from one plot to another. Floor plans are indicative only to give a general indication of the proposed development and floor layout. The dimensions are accurate to within + or -50mm. Dimensions should not be used for carpet sizes, appliance spaces or items of furniture. Please ask our Sales Advisers for details of the treatments specified for individual plots. Computer generated images are for general guidance only and are not intended to form part of any contract or warranty. Furniture shown is for illustrative purposes only.

SP214113/0713

# The Greenvale

– Five bedroom home



The Greenvale is a beautiful five bedroom home that offers the very best living space for your family. The impressive entrance hall leads to the bright and airy kitchen boasting breakfast, family and utility areas and a glazed bay that opens onto the rear garden. The lounge also features its own set of French doors. A cosy study and a bay fronted dining room complete the ground floor. Upstairs, the master bedroom comes with a full en suite, while the second bedroom has an en suite shower room, making it an ideal space for guests. Two further double bedrooms, a single bedroom and a family bathroom with separate shower offer plenty of room for the rest of the family.



[dwh.co.uk](http://dwh.co.uk)

Agent in Kuwait

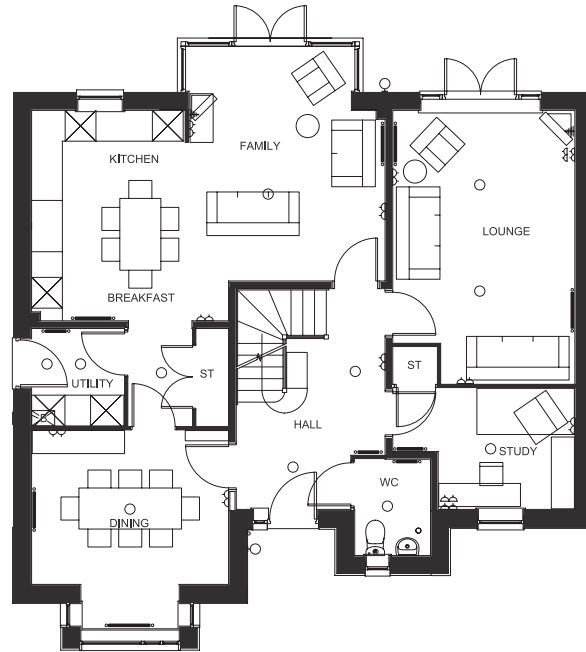
Agent in Qatar





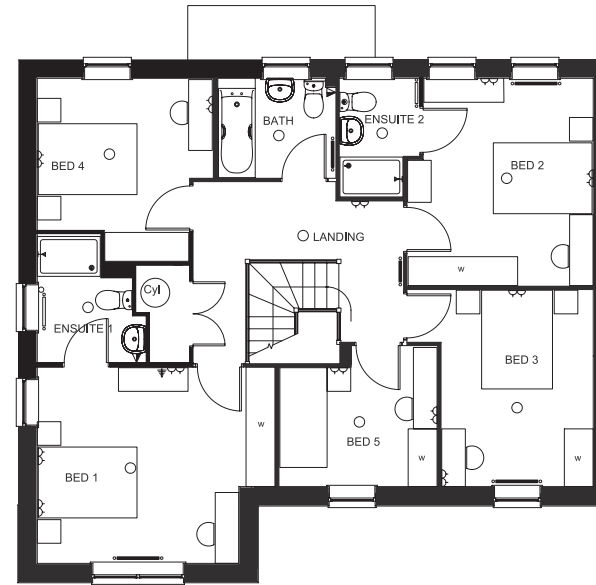
# The Greenvale

– Five bedroom home



## Ground Floor

Kitchen/Family/Breakfast	6890mm x 5327mm max	227" x 175" max
Dining	3840mm x 3013mm	127" x 9'10"
Lounge	5340mm x 3550mm max	176" x 11'7" max
Study	2439mm x 2375mm	8'0" x 7'9"



## First Floor

Bedroom 1	3977mm x 3740mm	13'0" x 12'3"
Bedroom 2	3961mm x 3240mm max	12'11" x 10'7" max
Bedroom 3	3754mm x 2899mm	12'3" x 9'6"
Bedroom 4	3354mm x 2897mm	11'0" x 9'6"
Bedroom 5	3025mm x 2686mm max	9'11" x 8'9" max

<b>KEY</b>	○	Light fitting	◀	Telephone outlet point	—	Radiator	B	Boiler	CYL	Cylinder	wm	Washing machine space	td	Tumble dryer space
	◊	Electric socket	◁	T.V. aerial socket	—	Towel radiator	ST	Store	f/f	Fridge/freezer space	dw	Dishwasher space	◄►	Dimension location

dwh.co.uk

Computer generated images are for illustrative purposes only and individual features often vary from one plot to another. Floor plans are indicative only to give a general indication of the proposed development and floor layout. The dimensions are accurate to within + or -50mm. Dimensions should not be used for carpet sizes, appliance spaces or items of furniture. Please ask our Sales Advisers for details of the treatments specified for individual plots. Computer generated images are for general guidance only and are not intended to form part of any contract or warranty. Furniture shown is for illustrative purposes only.

DWHSM / SP211902/0713

# The Coaldale

– Four bedroom home



This delightful 3 storey, four bedroom family home boasts a modern, well appointed kitchen and a generous lounge with dining area with a bright, airy glazed bay. On the first floor is a comfortable double bedroom, a single bedroom and a family bathroom. The second floor boasts the impressive master bedroom and its en suite shower room and further double bedroom.



[dwh.co.uk](http://dwh.co.uk)

Agent in Kuwait

  
مجموعة توب العقارية  
TOP REAL ESTATE  
Marketing & Consultancy

Agent in Qatar

  
يوتوبيا للعقارات  
UTOPIA Properties

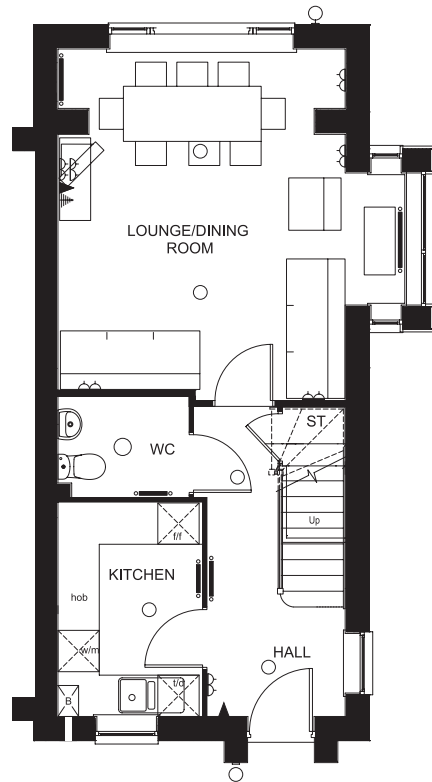
Where quality lives



David Wilson Homes

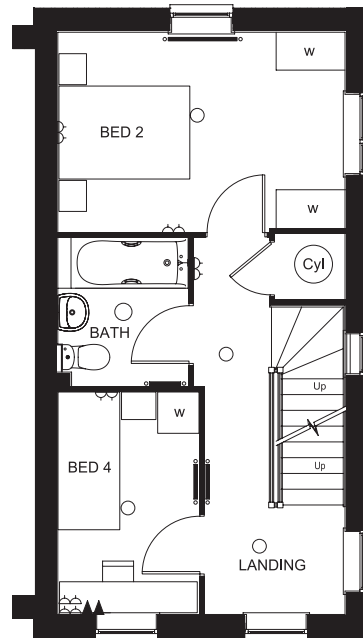
# The Coaldale

– Four bedroom home



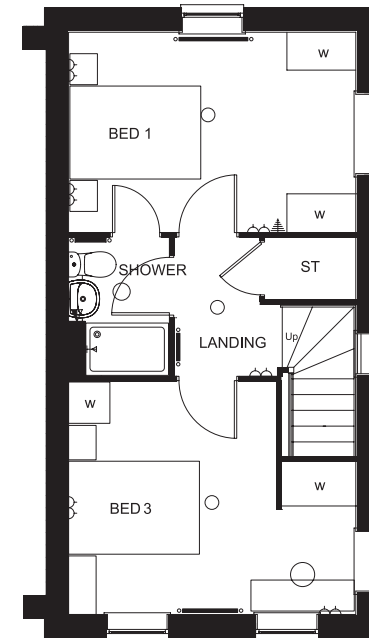
## Ground Floor

Kitchen	3113 x 2100mm	10'2" x 6'10"
Lounge/Dining	4956 x 4170mm	16'3" x 13'8"



## First Floor

Bedroom 2	4170 x 2909mm	13'8" x 9'6"
Bedroom 4	3243 x 2063mm	10'7" x 6'9"



## Second Floor

Bedroom 1	4170 x 2909mm	13'8" x 9'6"
Bedroom 3	4170 x 3395mm	13'8" x 11'1"

<b>KEY</b>	○	Light fitting	◀	Telephone outlet point	—○—	Radiator	B	Boiler	CYL	Cylinder	wm	Washing machine space	td	Tumble dryer space
	◊	Electric socket	◁	T.V. aerial socket	—■—	Towel radiator	ST	Store	ff	Fridge/freezer space	dw	Dishwasher space	◀▶	Dimension location

[dwh.co.uk](http://dwh.co.uk)

Computer generated images are for illustrative purposes only and individual features often vary from one plot to another. Floor plans are indicative only to give a general indication of the proposed development and floor layout. The dimensions are accurate to within + or -50mm. Dimensions should not be used for carpet sizes, appliance spaces or items of furniture. Please ask our Sales Advisers for details of the treatments specified for individual plots. Computer generated images are for general guidance only and are not intended to form part of any contract or warranty. Furniture shown is for illustrative purposes only.

SP211901/0613

# Chesterfield

– 3 bedroom detached home



This impressive three bedroom home is perfect for modern family living. The ground floor boasts a comfortable lounge with bay window and a stylish kitchen which features dining areas and an adjoining utility room. Upstairs are two double bedrooms, with an en suite shower room to the master bedroom, a single bedroom and a family bathroom.



[dwh.co.uk](http://dwh.co.uk)

Agent in Kuwait



Agent in Qatar



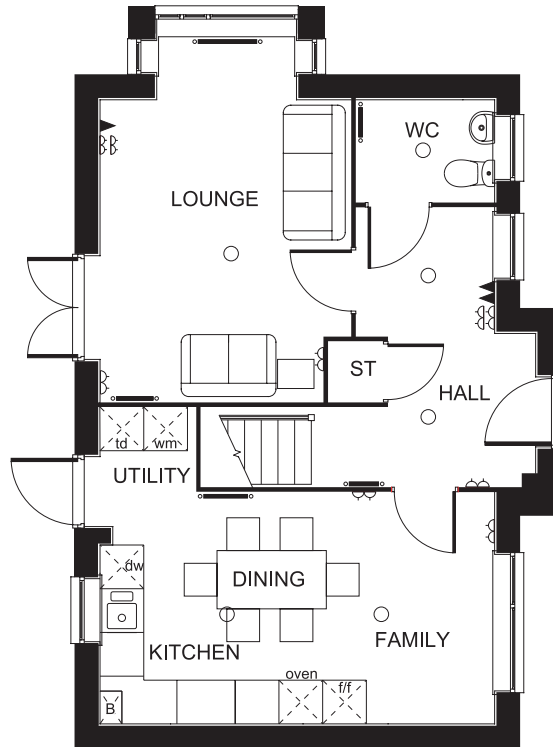
*Where quality lives*



**David Wilson Homes**

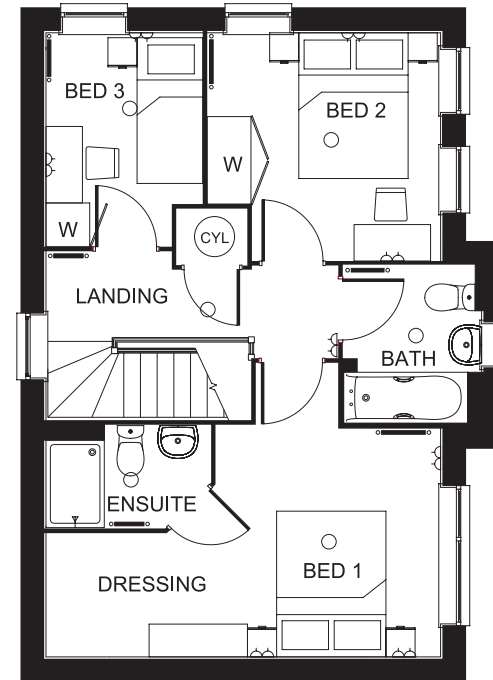
# Chesterfield

– 3 bedroom detached home



## Ground Floor

Kitchen/Dining	5415 x 3186mm max	17'9" x 10'5" max
Lounge	4153 x 3447mm max	13'7" x 11'3"



## First Floor

Bedroom 1	3089 x 2856mm max	10'1" x 9'4" max
Dressing Area	2326 x 1698mm	7'7" x 5'6"
Bedroom 2	3202 x 3132mm max	10'6" x 10'3" max
Bedroom 3	2935 x 2150mm	9'7" x 7'0"

<b>KEY</b>	○ Light fitting	◀ Telephone outlet point	—○— Radiator	B Boiler	CYL Cylinder	wm Washing machine space	td Tumble dryer space
	◻ Electric socket	⚡ T.V. aerial socket	—■— Towel radiator	ST Store	f/f Fridge/freezer space	dw Dishwasher space	

dwh.co.uk





# Tattenhoe Park

MILTON KEYNES

## Development layout



Developer

Agents in Kuwait

Agents in Qatar

Where quality lives



David Wilson Homes



To Priory Rise School